

Quick Start Guide

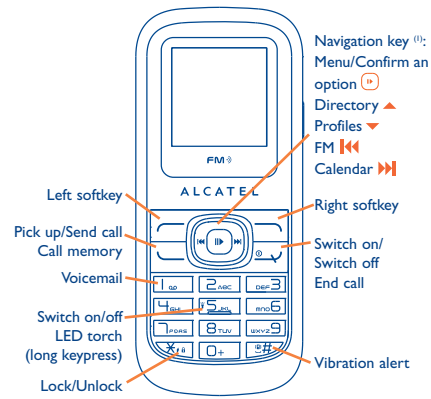
For more information about how to use the phone, please go to www.alcatelonetouch.com to download complete user manual (English version only). Moreover, from the website you can also consult FAQ (English version only).

SAR This product meets applicable national SAR limits of 2.0W/kg. The specific maximum SAR values can be found on page 19 of this user guide.

When carrying the product or using it while worn on your body, either use an approved accessory such as a holster or otherwise maintain a distance of 1.5 cm from the body to ensure compliance with RF exposure requirements. Note that the product may be transmitting even if you are not making a phone call.

Warning: Prolonged exposure to music at full volume on the music player may damage the listener's hearing. Set your phone volume safely. Use only headphones recommended by TCT Mobile Limited and its affiliates.

Your mobile



- 1.1 Keys**
- Navigation key
Confirm an option (press the middle of the key)
Access **music player** (long keypress)
- Pick up
Send a call
Access call memory (Redial) (short keypress)
- Switch on/Switch off the telephone (long keypress)
End call
Return to the main screen
- Left softkey
- Right softkey
- Access your voicemail (long keypress)
- In Edit mode:
- Short keypress: access the language list
- Long keypress: enter zero
- In Edit mode:
- Short keypress: change input methods
- Long keypress: access the Symbols table
- Switch on/off the Torch (long keypress)

- Silence mode:** your phone neither rings, beeps nor vibrates except for the alarms.
- Message unread.**
- Message list is full:** your terminal cannot accept any new messages. You must access the message list and delete at least one message on your SIM card.
- SIM card unavailable.**
- Memory card scanning completed.**
- Flight mode.**
- 1.2 Main screen icons**
- Battery charge level.**
Vibration alert: your phone vibrates, but neither rings nor beeps except for the alarms.
- Headset connected.**
- Call forwarding activated:** your calls are forwarded.
- Alarm clock programmed.**
- Voicemail message arrived.**
- FM radio is on.**
- Missed calls.**
- WAP alerts ⁽¹⁾.**
- Roaming.**
- GPRS active connection status** (Blue - Activated).
- Level of network reception.**
- Reception of a MMS in progress.**
- Sending a message.**
- Unread MMS.**

2 Getting started

2.1 Set-up

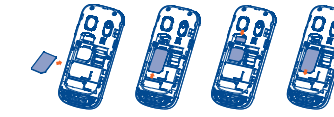
Removing and installing the back cover



Installing and removing the battery

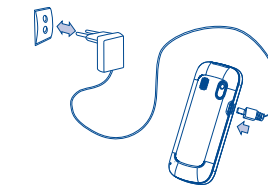


Inserting and removing the SIM Card



Place the SIM card with the chip facing downwards and slide it into its housing. Make sure that it is correctly inserted. To remove the card, press it and slide it out.

Charging the battery



Connect the battery charger to your phone and mains socket respectively

- The charging may take about 20 minutes to start if the battery is flat.
- Be careful not to force the plug into the socket.
- Make sure the battery is correctly inserted before connecting the charger.
- The mains socket must be near to the phone and easily accessible (avoid electric extension cables).
- When using your telephone for the first time, charge the battery fully (approximately 3 hours). You are advised to fully charge the battery (100%).
- To reduce power consumption and energy waste, when battery is fully charged, disconnect your charger from the plug; reduce the backlight time, etc.

The charge is complete when the animation stops.

2.2 Power on your phone

Hold down the key until the phone powers on.

2.3 Power off your phone

Hold down the key from the main screen.

ALCATEL one touch.

3 Calls

3.1 Making a call

Dial the desired number then press the key to place the call. If you make a mistake, you can delete the incorrect digits by pressing the right softkey.

To hang up the call, press the key.

Making an emergency call

If your phone is covered by the network, dial emergency number and press the key to make an emergency call. This works even without a SIM card and without typing the PIN code or unlocking the keypad.

3.2 Calling your voicemail ⁽¹⁾

To access your voicemail, hold down the key.

3.3 Receiving a call

When you receive an incoming call, press the key to talk and then hang up using the key.

3.4 Available functions during the call

During a call, you can use your directory, your calendar, short messages, etc. without losing your correspondent by pressing the key.

⁽¹⁾ Depending on your network operator.

4 Directory

4.1 Consulting your directory

To access the **directory** from the main screen, press the key and select the icon from the menu.

4.2 Adding a contact

Select the directory in which you wish to add contact, press the "Options" softkey, select "Add contact".

5 Messages

5.1 Create message

From the main menu select "Messages" to create text/multimedia message. You can type a message and you can also modify a predefined message in **Templates** or customise your message by adding pictures, photos, sounds, titles, etc (only available while editing a MMS). While writing a message, select "Options" to access all the messaging options. You can save your messages that you send often to **Drafts** or **Templates** (MMS only).

Specific letters (accent) will increase the size of the SMS, this may cause multiple SMS to be sent to your recipient.

⁽¹⁾ Contact your network operator to check service availability.
English - CJB22BAALAAB

6 Settings

From the main screen, select the icon menu and select the function of your choice in order to customise your telephone: **Color, Display, Clock, Keys, Call memory, Call settings, More settings...**

7 Tools

7.1 Calendar

Once you enter this menu from "Tools", there is a monthly-view calendar for you to keep track of important meetings, appointments, etc. Days with events entered will be marked in color.

7.2 Alarm

Your mobile phone has a built-in alarm clock with a snooze feature.

7.3 Calculator

Hold down the key to get the decimal point. Confirm with the key or the left softkey.

7.4 Converter

Unit converter and Currency converter.

7.5 Torch

To light in darkness, you may activate "Torch" by below operations:
Long press key to activate it; long press key to deactivate it (in idle screen).
Access to Menu and select "Tools" and choose "Torch".

⁽¹⁾ Depending on your network operator.

7.6 Morse Code

You may express yourself thanks to torch flashing, it will use Morse code.
Access to "Tools" and choose "Morse code", select your words and flash it.
The torch will flash special sequence in short time, if people can understand Morse code, they will get the meanings.

7.7 Voice memo

This feature enables you to record a call by selecting "Voice memo" while communicating. To record a sound, select "Voice memo", then "New record".

7.8 Fake call

This program enables you to call yourself by simulating a caller number/name, ringtone, contact photo at a scheduled time. It helps you to politely escape from social situations at any time you wish. This call can be rejected by key.

Settings

- Predefined settings of Caller name/number, Call time, Ringtone, Image (Contact photo).

Activate

- Activate a fake call by "Tools/Fake call/Activate" or by a long press of the key on the main screen. The call will then be made at the predetermined time.

7.9 File manager

You will have an access to all audio and visual files stored in phone in File manager.

7.9.1 My audios

Choose an audio for an incoming call, a message alert, power on/off ringtone.

7.9.2 My images

You can select an image or a photo as wallpaper or the Power ON/OFF display.

7.9.3 My creations

This feature stores all the photos captured by your mobile phone.

7.9.4 Unknown files

Store files of unsupported format.

7.9.5 Formats and compatibility

- Sounds: midi, amr, MP3, ...
- Images: jpg, gif

7.9.6 Memory card

You will have access to all files stored in memory card here.

Insert the memory card



To release the microSD card holder, slide it in the direction of the arrow and lift it. Then insert the microSD card with the golden contact downward. Finally, turn down the microSD holder and slide it in the opposite direction to lock it.

7.10 Memory status

It will indicate how much space is used and how much is currently free on your phone or memory card.

7.11 My shortcuts

Access the shortcuts already programmed. To programme new shortcuts: select "My shortcuts" if you want to create a quick access to a function, Directory, or WAP Bookmarks, etc.

8 WAP

Access Wap options: **Homepage, Bookmarks, Recent pages, Offline pages, Go to URL** and **Profiles**.

9 Fun

9.1 Music player

Access this feature from the main menu by selecting "Music player".

9.2 FM Radio

Your phone is equipped with an FM radio ⁽¹⁾ with RDS functionality. You can use the application as a traditional FM radio with automatic tuning and saved channels or with parallel visual information related to the radio program on the display, if you tune to stations that offer Visual Radio service. You can listen to it while running other applications.

9.3 Games

Your Alcatel phone may include some games.

⁽¹⁾ The quality of the radio depends on the coverage of the radio station in that particular area.

10 Camera

Your mobile phone is fitted with a camera for taking photos that you can use in different ways:

- store them in your "File manager".
- send them in a multimedia message (MMS) to a mobile phone.
- customise your main screen.
- select them as incoming call image to a contact in your directory.

ALCATEL is a trademark of Alcatel-Lucent and used under license by TCT Mobile Limited.

All rights reserved © Copyright 2011 TCT Mobile Limited.

TCT Mobile Limited reserves the right to alter material or technical specification without prior notice.

