

# 1 Your mobile .....

## Keys in idle mode

**Left softkey:**  
Access Option/  
Menu/Confirm  
Display a message received

**Send key:**  
Pick up / Send call  
Call memory (short keypress)

**Voicemail (long keypress)**  
Insert a smart punctuation

**Keypad lock/unlock (long keypress)**

**Navigation key:**  
▲: Messages  
▼: Directory  
Scroll/adjust volume during a call  
◀: Alarm  
▶: Mode  
FM Radio <sup>(1)</sup>

Toggle among the menus  
○: Same as left softkey/quick access

**Right softkey:**  
Delete/Back/Mute the ring tone

**End key:**  
Power on /Power off (long keypress)  
End call  
Return to the main screen  
Reject a call

Vibrator (long keypress)  
Validate selected word  
Add a word

OT-S120  
OT-S121  
OT-S210  
OT-S211  
OT-V212  
ALCATEL  
mobile phones

<sup>(1)</sup> OT-S121/OT-S211/OT-V212.

# 2 Getting started .....

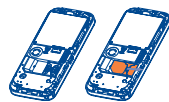
## 2.1 Remove the back cover



## 2.2 Insert and remove the SIM Card

Inserting the SIM card in order to use your phone. To insert your SIM card, turn off your phone by holding down the key.

Fit the SIM card with the chip (the gold connectors) facing downwards. Slide the SIM card into its compartment, ensuring that the cut-off corner is in the right way. Push the SIM card with your finger to release it.

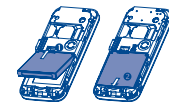


## Remove the SIM Card

Please remove the battery before removing the SIM card.

## 2.3 Insert and remove the battery

To remove the battery, do the same as in the above, but in reverse.



## 2.4 Charge the battery

NOTICE :If the battery is completely empty, it may probably take 20 minutes before the charging indicator appears on the display or any calls can be made

# 3 Menu.....

Select the item you require using the navigation keys (▲, ▼), then press the left softkey again to confirm.

**Directory:** Access/create directory files and make calls from your directory.

**Messages:** Read, write and send your SMS. View your messages in your inbox, outbox. Adjust the settings and activate/deactivate SMS CB <sup>(1)</sup> message reception.

**Sounds:** Change the mode, volume, ringtones, SMS, power on/off sounds, key beep.

**Display:** Change the main screen wallpaper, colours/reverse, power on/off display, screensaver and contrast.

**Settings:** Set the time, date, language, security mode, answer mode, etc

**Call services:** Access functions such as: voicemail number, call memory, call settings, network, forward and call barring.

**Games:** Play the 2 games embedded in your telephone.

**Tools:** Access the Alarm and Calculator functions.

**Services <sup>(2)</sup>:** Access the Operator services.

# 4 Main screen icons .....

- Battery charge level**
- Vibrate mode**
- Silence mode**
- Unread message**
- Message list is full**

<sup>(1)</sup> Contact your network operator to check service availability.

<sup>(2)</sup> Depending on your operator's network.

- Voicemail message arrived**
- Missed call**
- Call forwarding activated:** your calls are forwarded
- Alarm programmed**
- Roaming indicator**
- Home zone indicator**
- Signal strength indicator**
- Keypad lock**
- FM Radio**

# 5 Tools .....

## 5.1 Alarm

+ = "snooze": The alarm will ring again after 5 minutes.

+ = "stop"

When the phone is switched off, the alarm will still go off.

## 5.2 Calculator

## 5.3 FM Radio

If FM radio is available <sup>(1)</sup>

: increase volume

: decrease volume

: switch to the previous station in automatic search mode

: switch to the next station in automatic search mode

: Switch between auto and fixed in Search Mode

- (long keypress): go to saved stations

<sup>(1)</sup> OT-S121/OT-S211/OT-V212.

# 6 Calls .....

## 6.1 Make a call

Dial number then press . To hang up, press .

## Make an emergency call

Dial 112 or the relevant emergency number and press . Emergency calls can be made at any time without the SIM card or PIN code. Once the call has been made, the screen will display: "SOS".

## Make an international call

Hold down until the "+" is displayed, then enter the country and area codes, then complete the number and send the call.

## Call a number from the directory

Press to access the directory.

Select the desired phone number and press .

## 6.2 Incoming call

You can reject a call with automatic sent message.

## 6.3 Available functions during the call

Access the available options during a call by pressing .

## 6.4 Call your voicemail <sup>(1)</sup>

Make a long keypress on the key.

<sup>(1)</sup> Contact your network operator for more information.

# 7 Messages .....

Press and select "Messages".

## 7.1 Create an SMS

"Messages" → "create" → Abc →

and choose your action:

**Send:** send the message to a recipient.

**Send to many:** send the message to a group of people you have defined

**Send to email:** send a message to an email address <sup>(1)</sup>.

**Save:** save the message in the unsent box and send it later.

**Templates:** use or modify an existing message.

**Discard:** discard the message.

**Predictive (T9):** select this mode to enter the words more quickly.

**I23:** switch to numeric mode

**T9 help:** help menu for the predictive mode

## 7.2 Read an SMS

In the inbox, read and unread messages are shown with different icons. Press for a quick access to reply SMS

The outbox included sent and unsent messages.

## 7.3 Inbox/Outbox

Select the message and press and choose your option: Reply/Delete/Forward message/Archives/Modify/Extract number/Call number.

<sup>(1)</sup> Contact your network operator for service availability.

# 8 Directory .....

You may store up to 255 entries in the phone memory.

## 8.1 Directory menu

**View:** access the list of contacts (in alphabetical order).

**Create:** enter number and name of a new contact.

**Delete:** delete the selected contact.

**Copy:** copy the selected contact from the SIM memory to the phone memory and vice versa.

**Caller group:** group together names by category.

**Select Dir.:** select the SIM directory, Phone directory or both at the same time.

**Memory status:** check the number of contacts and the memory space left.

**My number:** enter your own phone numbers for future reference.

**Speed Dial:** set up speed dial for each key from to .

## 8.2 Create a contact

▼ select "create" and enter number and name of a new contact.

## 8.3 Consult your directory ("View")

Select "Dir.," then "View" to access the list of your contacts

### Available options in the contact list

Once you have selected a name, press to access the following options: Call number/Send message/Details/Modify/Delete/Copy/Caller group/Search number.

### Caller group

You can group together names by category and select a special ringtone. For each group, you can select the following options: Modify/Ringtone/SMS alert/Members/Add member/Delete all.

# 9 Sounds .....

From the main menu, select "Sounds" and select one of the following options in order to customise your telephone.

## 9.1 Mode

**Ringtone:** only the tone is played.

**Vibrate:** the phone will vibrate only (but the alarms and low battery sound will still function).

**Vibrate & ring:** vibrator and tone at the same time.

**Vibrate then ring:** vibrator then tone.

**Vibrate.Beep.Ring:** vibrator then warning beep, then tone.

**Silence:** no sound no beep (but the alarms and low battery sound will be played anyway).

## 9.2 Volume

The volume can be adjusted to one of the set levels.

# 10 Display .....

## 10.1 Wall paper <sup>(1)</sup>

Select the image you wish to be displayed as the idle screen.

## 10.2 Colours <sup>(1)</sup>/Reverse <sup>(2)</sup>

Choose different colors for the presentation of the screen.

## 10.3 Backlight

Select the length of time the backlight will be displayed: 7s, 15s, 20s, 30s.

<sup>(1)</sup> OT-S210/OT-S211/OT-V212.

<sup>(2)</sup> OT-S120/OT-S121.

# 11 Settings .....

## 11.1 Clock

Set time and date, time format, display (show or hide the clock).

## 11.2 Languages

To choose the language in which the messages will be displayed.

## 11.3 Dictionary

Create, modify or delete a word in your personal dictionary. When creating an SMS, the words in this dictionary will be automatically called up if you have selected the Predictive Mode (T9).

## 11.4 Auto keypad lock

Select the length of time before the keypad will be locked if the handset is not used. From this function you may select a timing of 5 to 40 seconds, or to set it "off" if you prefer to lock it manually.

## 11.5 Auto power

## 11.6 Answer mode

## 11.7 Factory reset

# 12 Call services.....

## 12.1 Call memory

From the main screen, press and your phone display a call list. Each call is displayed with an icon indicating the type of call.

Select a telephone number in the list and press to redial it or press to access the following options:

**Details:** display information on the selected call.

**Save number:** store the number in your directory.

**Send message:** create an SMS.

**Call number:** call the selected number.

**Modify:** modify the number, then call it or save it.

**Delete:** delete the number selected.

**Delete all:** delete the entire list.

## 12.2 Call settings <sup>(1)</sup>

Minute alert/Call waiting/Auto redial/Billing/Duration/Amount/Hide my ID/Reject with SMS.

## 12.3 Call services <sup>(1)</sup>

Network/Call forwarding/Call barring.

<sup>(1)</sup> Contact your network operator for more information.

# 13 Games .....

## 13.1 Russia

The aim of this game is to make as many complete lines of bricks as possible.

### Key functions:

- Same as (left)
- Same as (right)
- Same as (right)
- Rotate the brick
- Move left
- Move right
- Drop the brick

## 13.2 Bricks <sup>(1)</sup>

The aim is to break as many bricks as possible with a bat and ball.

3 lives per game. Miss a ball = lose a life

Bonus depending on the position in which the ball hits the bricks.

### Key functions:

- Same as (left)
- Same as (right)
- Move left
- Shoot first ball
- Move right
- Shoot first ball

<sup>(1)</sup> OT-S210, OT-S211, OT-V212 do not include this game.

Prolonged exposure to music at full volume on the music player may damage the listener's hearing. Set your phone volume safely. Use only headphones recommended by TCT Mobile Limited and its affiliates.

