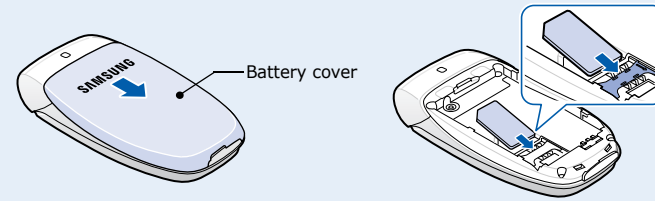


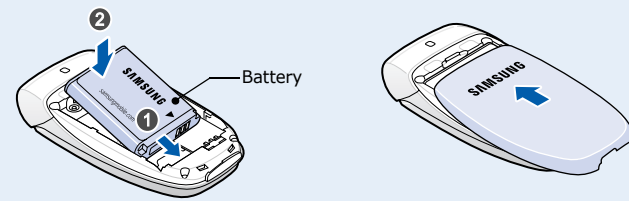
- Depending on the software installed or your service provider or country, some of the descriptions in this guide may not match your phone exactly.
- Depending on your country, your phone and accessories may appear different from the illustrations in this guide.

Installing the SIM card and battery

- Remove the battery cover and insert the SIM card.

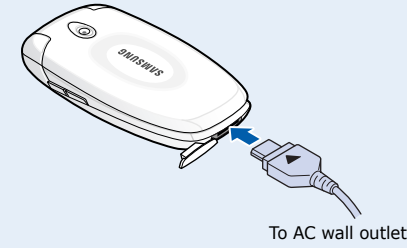


- Install the battery and reattach the cover.

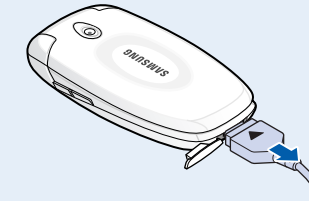


Charging the battery

- Plug the supplied travel adapter.

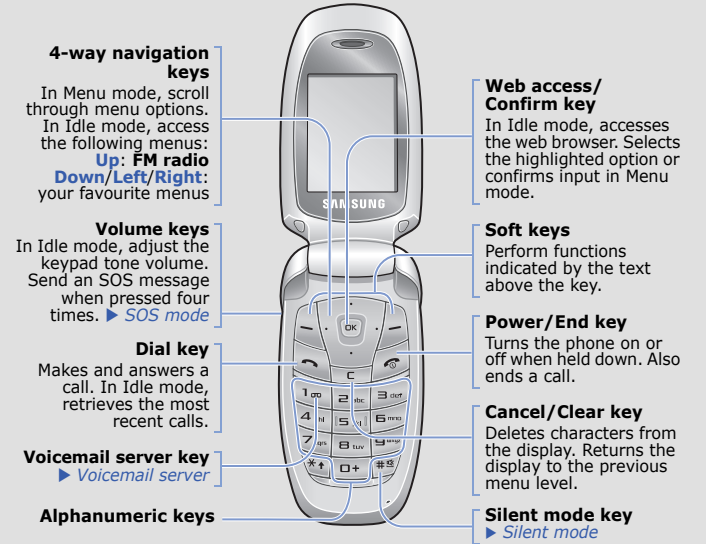


- When charging is finished, unplug the adapter.



Note: Do not remove the battery from the phone without unplugging the adapter first. Otherwise, the phone may be damaged.

Phone layout and key functions



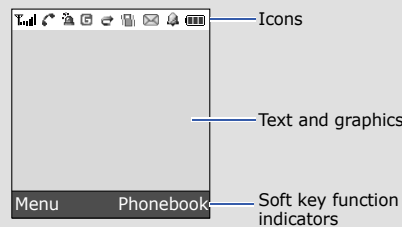
Silent mode Press and hold **#** in Idle mode to disable all sounds on the phone. To exit, press and hold this key again.

Voicemail server Press and hold **1** in Idle mode to access your voicemail server.

SOS mode With the phone closed, press the Volume keys 4 times to send an SOS message to preset phone numbers. Once the SOS message is sent, the phone will change to SOS mode and will receive calls only from the registered recipients. Upon receiving a call from the SOS message recipients, the phone will automatically answer the call. Press **OK** to exit SOS mode.

Display

Your phone is in Idle mode when you are not on a call or using a menu. You must be in Idle mode to dial a phone number.



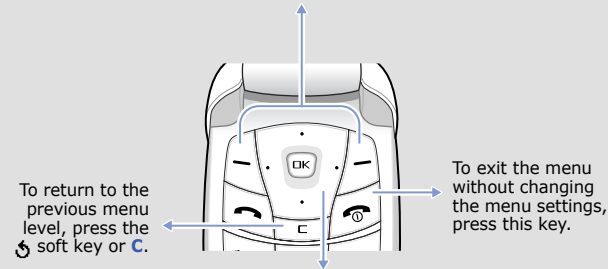
Your phone displays the following status indicators on the top of the screen:

Icon	Description
	Received signal strength
	Call in progress
	Out of your service area; you cannot make or receive calls except for emergency calls
	GPRS network
	Roaming network
	Silent mode
	Call ringer set to vibrate
	Call diverting feature active
	SOS message feature active
	New text message
	New multimedia message
	New voicemail message
	Alarm set
	Battery power level

Using the menus

In Idle mode, press the **Menu** soft key to enter the main menu.

Labels at the bottom corners of the display show the current soft key functions. Press the left soft key (L) or right soft key (R) to perform the function indicated.



Use the 4-way Navigation keys as shortcuts to access your favourite menus. **Up** is fixed as a shortcut to **FM radio**.

- In Idle mode, press the **Menu** soft key.
- Select **Phone settings** → **Shortcuts**.
- Select a key.
- Select a menu to be assigned to the key.

To select or modify a menu or feature:

- In Idle mode, press the **Menu** soft key.
- Press the Navigation keys to reach a desired menu and then press the **Select** soft key or **OK**.
- If the menu contains any submenus, locate the one you want by pressing the Navigation keys. Press the **Select** soft key or **OK** to enter the submenu.
If the selected menu contains additional submenus, repeat this step.
- Press the Navigation keys to find the setting of your choice.
- Press the **Select** soft key or **OK** to confirm your chosen setting.

Shortcut numbers

You can quickly access the menu you want by using shortcut numbers. The shortcut number displays in front of the menu name in Menu mode.

Switching on or off the phone

- Press and hold **Power** for more than one second to switch on the phone.
- To switch off the phone, press and hold **Power** for more than two seconds.

Changing the display language

- In Idle mode, press the **Menu** soft key.
- Select **Phone settings** → **Language**.
- Select a language.

Making a call

- In Idle mode, enter an area code and phone number, and press **Call**.
- Press **End call** to end the call.

Answering a call

- When the phone rings, press the **Accept** soft key or **Call** to answer a call.
To reject the call, press the **Reject** soft key or **End call**.
- To end the call, press **End call**.

Menu map

1. SIM AT* 2. Call records 2.1 Missed calls 2.2 Received calls 2.3 Dialed calls 2.4 Delete all 2.5 Call time 2.6 Call cost*	5. Messages 5.1 Text messages 5.2 Multimedia messages 5.3 Push messages 5.4 Configuration messages 5.5 SOS messages 6. Funbox 6.1 WAP browser 6.2 FM radio 6.3 Games 6.4 Sounds 6.5 Images 6.6 Delete all 6.7 Memory status	9. Phone settings 9.1 Display settings 9.2 Greeting message 9.3 Own number 9.4 Language 9.5 Security 9.6 Extra settings 9.7 Shortcuts 9.8 Connection settings 9.9 Volume key 9.0 Reset settings
3. Network services 3.1 Call diverting 3.2 Call barring 3.3 Call waiting 3.4 Network selection 3.5 Caller ID 3.6 Closed user group	7. Organiser 7.1 Alarm 7.2 Calendar 7.3 Time & Date 7.4 Calculator 7.5 To do list 7.6 Voice memo 7.7 Currency exchange	Press the Phonebook soft key in Idle mode. 1 Search 2 New entry 3 Group search 4 Edit group 5 Speed dial 6 Delete all 7 Copy all to 8 Memory status 9 SDN*
4. Sound settings 4.1 Ringtone 4.2 Ring volume 4.3 Alert type 4.4 Keypad tone 4.5 Message tone 4.6 Alert on call 4.7 Folder tone 4.8 Power on/off 4.9 Extra tones	8. Camera 8.1 Take photos 8.2 My photos 8.3 Memory status	* Shows only if supported by your SIM card.

Adjusting the volume

- In Idle mode, press the **Menu** soft key.
- Select **Sound settings** → **Ring volume**.
- Press **Up** or **Down** to adjust the volume level.
- Press the **OK** soft key.

While a call is in progress, press the Volume keys to adjust the earpiece volume.

Changing a ringtone for calls

- In Idle mode, press the **Menu** soft key.
- Select **Sound settings** → **Ringtone**.
- Select a ringtone.

Redialling recent numbers

- In Idle mode, press **Call**.
- Press **Up** or **Down** to scroll to the number you want.
- Press **Call** to dial the number.

Entering text

Changing the text input mode

In a text input field, press the right soft key and select the language you want:

- QWERTY**: Quick English mode
- EN**: English mode
- 1234**: Number mode
- None**: Symbolic mode

Quick English mode

- Press **2** to **9** to start entering a word. Press each key once for one letter.
The word you are entering appears on the display. It may change with each keypress. Finish entering the word before editing or deleting any keystrokes.
Example: To enter "Hello" in English word mode, press **4, 3, 5, 5,** and **6**.
- Press **#** to insert a space and enter the next word.

English mode

Press the keys labelled with the letter you want once for the first letter, twice for the second letter, and so on.

For example, press **2** three times to enter "C" and **5** two times to enter "K."

Number mode

Press the keys corresponding to the digits you want.

Symbolic mode

Press the number keys corresponding to the symbol you want and press the **OK** soft key. You can press **Up** or **Down** to display more symbols.

Tips for entering text

- To move the cursor, press the Navigation keys.
- To delete characters one by one, press **C**. To clear the display, press and hold **C**.
- To insert a space between characters, press **#**.
- To change case in Quick English mode or English mode, press *****.
- To enter punctuation marks in Quick English mode or English mode, press **1**.

✈ Sending an SMS message

- In Idle mode, press the **Menu** soft key.
- Select **Messages** → **Text messages** → **Write new**.
- Enter the message text.
- Press the **Options** soft key and add items using the following options:

Feature	Description	Select
Select ringtone and volume	Select a ringtone for incoming calls or a volume level.	Menu > Sound settings > Ringtone or Ring volume
Alert type	Select an alert type for the call ringer.	Menu > Sound settings > Alert type
Select key tone	Select a tone which the phone sounds when you press a key.	Menu > Sound settings > Keypad tone
Select message tone	Select the alert ringtone for incoming SMS, MMS, and broadcast messages, or set how often you are informed of a new message.	Menu > Sound settings > Message tone
Alert on call	Set the phone to alert you when you receive a new message or when the time for an alarm comes during a call.	Menu > Sound settings > Alert on call
Folder tone	Select the tone that the phone sounds when you open or close the phone.	Menu > Sound settings > Folder tone
Power on/ off tone	Select the melody that the phone sounds when it is switched on or off.	Menu > Sound settings > Power on/off
Extra tones	Set additional tones for the phone.	Menu > Sound settings > Extra tones

Feature	Description	Select
Display settings	Change settings for the display and backlight.	Menu > Phone settings > Display settings
Greeting message	Enter the greeting message to be displayed when the phone is switched on.	Menu > Phone settings > Greeting message
Check your own phone numbers	Check your phone numbers or assign a name to them.	Menu > Phone settings > Own number
Display language	Select a language to be used for the display text.	Menu > Phone settings > Language
Security	Protect the phone against unauthorised use.	Menu > Phone settings > Security
Mobile Tracker	Track your phone when it is stolen or lost. When someone tries to use your phone with other SIM card, the phone will automatically send the preset tracking message to your family or friends. This feature may be unavailable due to certain features supported by your service provider.	Menu > Phone settings > Security > Mobile Tracker
Extra settings	Set the automatic redialling feature or the answering method.	Menu > Phone settings > Extra settings

- Add objects:** add sounds, images, or animated images.
 - Add templates:** add text templates.
 - Add emoticon:** add emoticons.
 - Add phonebook:** add Phonebook contacts.
 - Add bookmark:** add bookmark items.
- Press the **Options** and select **Send only, Save and send**, or **Save only**.
 - If you select **Save and send** or **Save only**, select a memory location.
 - Enter destination numbers.
 - Press the **Options** soft key and select **Send message** to send the message.

✈ Taking a photo

- In Idle mode, press the **Menu** soft key.
- Select **Camera** → **Take photos**.
- Aim the lens at the subject and make any desired adjustments.
- Press **OK** to take a photo.

Feature	Description	Select
Read SMS or MMS messages	Read received, sent, or saved messages.	Menu > Messages > Text messages or Multimedia messages > Inbox, Outbox, or Draft
Send SMS or MMS messages	Create and send messages to other mobile phones.	Menu > Messages > Text messages or Multimedia messages > Write new
Message templates	Preset templates of frequently used messages or emoticons.	Menu > Messages > Text messages or Multimedia messages > Templates or Emoticon templates
Messaging options	Set options for using messaging services.	Menu > Messages > Text messages or Multimedia messages > Settings or Setup
Delete messages	Delete messages in each message box, or all messages at once.	Menu > Messages > Text messages or Multimedia messages > Delete all
Message memory status	Check memory information for messages.	Menu > Messages or Multimedia messages > Memory status
Voicemail	Access your voicemail server and listen to messages on the network.	Menu > Messages > Text messages > Voice mail

Feature	Description	Select
Menu shortcuts	Set the Navigation keys as shortcuts to access your favourite menus directly.	Menu > Phone settings > Shortcuts
Connection settings	Create and customise the profiles containing the settings for connecting your phone to the network.	Menu > Phone settings > Connection settings
Volume key	Set whether the phone mutes the call ringer or rejects a call if you press and hold the Volume keys when a call comes in.	Menu > Phone settings > Volume key
Reset the phone	Reset the phone to the factory default settings.	Menu > Phone settings > Reset settings

✈ Important safety precautions

Read these guidelines before using your wireless phone. Failure to comply with them may be dangerous or illegal.

Drive safely at all times

Do not use a hand-held phone while driving; park your vehicle first.

Switching off when refuelling

Do not use the phone at a refuelling point (service station) or near fuels or chemicals.

Switching off in an aircraft

Wireless phones can cause interference. Using them in an aircraft is both illegal and dangerous.

- Press the **Save** soft key to save the photo, or press the **Cancel** soft key to delete the photo.

- After saving the photo, press the **📷** soft key to take another photo.

Note: After taking a photo, you may be unable to save the photo, depending on your phone's memory capacity. Delete old photos to free up memory.

✈ Quick feature reference

This section provides brief explanations of features on your phone.

Feature	Description	Select
Find a contact	Search for contacts in Phonebook.	Phonebook > Search
Add a new contact	Add a new contact to Phonebook.	Phonebook > New entry
Search group	Search for Phonebook contacts in caller groups.	Phonebook > Group search
Change properties of a caller group	Select a ringtone and image for incoming calls and messages from members of a group. Also change the group name.	Phonebook > Edit group
Speed dial	Assign speed dial numbers (2 to 9) for eight of your most frequently dialed numbers.	Phonebook > Speed dial

Feature	Description	Select
Broadcast message	Change settings for the service and access broadcast messages.	Menu > Messages > Text messages > Broadcast
MMS profile	Select or configure a connection profile to be used for MMS.	Menu > Messages > Multimedia messages > MMS profile
Push message	Change the settings for the service, and access or delete push messages.	Menu > Messages > Push messages
Configuration message	Access or delete messages containing network parameters from your service provider.	Menu > Messages > Configuration messages
SOS message	Activate the SOS message feature. Enter recipients and select the repeat mode.	Menu > Messages > SOS messages
Web browser	Launch and configure the web browser.	Menu > Funbox > WAP browser
FM radio	Listen to music or news via the FM radio on your phone.	Menu > Funbox > FM Radio
Access media files	Access games, sounds, or images in your phone's memory.	Menu > Funbox > Games, Sounds, or Images
Delete all media files	Delete games, sounds, or images in each media box, or all media files at once.	Menu > Funbox > Delete all

Switching off near all medical equipment

Hospitals and health care facilities may be using equipment that could be sensitive to external RF energy. Follow any regulations or rules in force.

Interference

All wireless phones may be subject to interference, which could affect their performance.

Special regulations

Follow any special regulations in force in any area and always switch off your phone whenever it is forbidden to use it.

Water resistance

Your phone is not water-resistant. Keep it dry.

Sensible use

Use only in the normal position (held to your ear). Avoid unnecessary contact with the antenna when the phone is switched on.

Emergency calls

Key in the emergency number for your present location, then press **📞**. Do not end the call until given permission to do so.

Small children and your phone

Keep the phone and all its parts including accessories out of reach of small children.

Accessories and batteries

Use only Samsung-approved batteries and accessories, such as headsets and PC data cables. Use of any unauthorised accessories could damage your phone and may be dangerous.

CAUTION

Risk of explosion if a battery is replaced by an incorrect type. Dispose used batteries according to the instructions.

Feature	Description	Select
Delete Phonebook contacts	Delete all Phonebook contacts stored in the phone's memory, on the SIM card, or both.	Phonebook > Delete all
Copy all to	Copy all of the contacts stored on the SIM card to the phone's memory, or vice versa.	Phonebook > Copy all to
Phonebook memory status	View the total number of Phonebook contacts in the phone's memory or on the SIM card.	Phonebook > Memory status
SDN(Service Dialling Numbers)	Access the list of service numbers assigned by your service provider.	Phonebook > SDN
Use the SIM service	Use a variety of additional services offered by your service provider.	Menu > SIM AT
View recent calls	View the most recent calls you have dialed, received, or missed.	Menu > Call records > Missed calls, Received calls, or Dialed calls
Delete recent calls	Delete the call logs in each call type, or all logs at once.	Menu > Call records > Delete all
Call time display	View the duration of recent calls you have dialed and received. Also reset the time counter.	Menu > Call records > Call time
Call cost display	View the cost of your calls.	Menu > Call records > Call cost
Network services	Access network services offered by your service provider.	Menu > Network services

Feature	Description	Select
Funbox memory status	Check the amount of memory in use for games or sounds and images.	Menu > Funbox > Memory status
Alarm	Set an alarm to sound at a specific time.	Menu > Organiser > Alarm
Calendar	Keep track of daily or monthly schedules.	Menu > Organiser > Calendar
Time and date	Set the current time and date manually and set your local time zone.	Menu > Organiser > Time & Date
Automatic time update	Set your phone to update the current time automatically when you travel abroad. Time information may not be updated when you move from one time zone to another within a country.	Menu > Organiser > Time & Date > Auto update
Calculator	Perform basic arithmetic functions.	Menu > Organiser > Calculator
Task list	Create a list of tasks and assign a deadline to each task.	Menu > Organiser > To do list
Voice memo	Record voice memos and listen them.	Menu > Organiser > Voice memo
Currency converter	Do currency conversions.	Menu > Organiser > Currency exchange
Camera	Take photos in various modes, and access saved photos in jpeg format. You can also check memory information for the photos.	Menu > Camera



At very high volume, prolonged listening to a headset can damage your hearing.

Qualified service

Only qualified service personnel may repair your phone.

✈ SAR information

Your wireless phone is a radio transmitter and receiver. It is designed and manufactured not to exceed the emission limits for exposure to radio frequency (RF) energy set by the European Union (EU) Council. These limits are part of comprehensive guidelines and establish permitted levels of RF energy for the general population. The guidelines are based on the safety standards that were developed by independent scientific organisations through periodic and through evaluation of scientific studies.

The standards include a substantial safety margin designed to assure the safety of all persons, regardless of age and health.

The exposure standard for wireless phones employs a unit of measurement known as Specific Absorption Rate (SAR). The SAR limit set by the EU Council is 2.0 W/kg. The highest SAR value for this model phone was 0.919 W/kg.