

SGH-X160 QUICK GUIDE

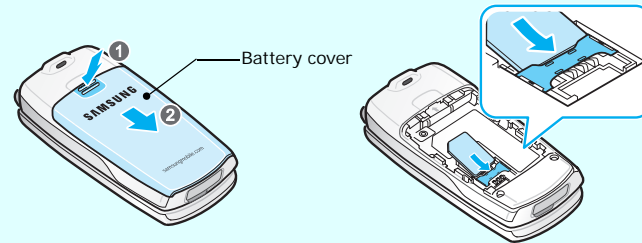
This guide explains how to set up your phone and gives a quick overview of the main functions of the phone.

World Wide Web
http://www.samsungmobile.com

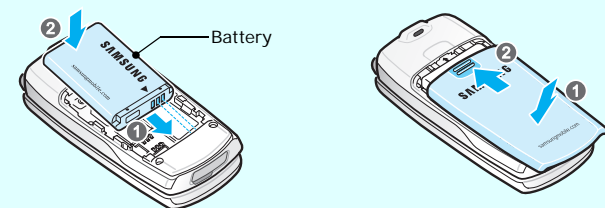
Printed in Korea
Code No.: GH68-10701A
English: 04/2006. Rev.1.0

Installing the battery

1. Remove the battery cover and insert the SIM card.

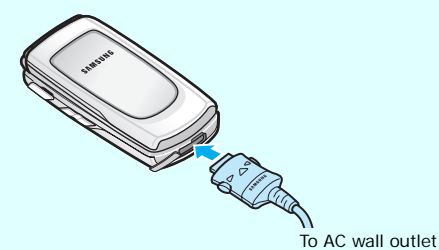


2. Install the battery and reattach the cover.

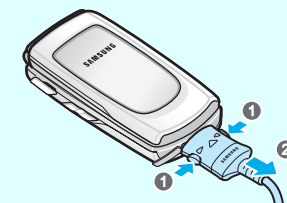


Charging the battery

1. Plug the supplied travel adapter.

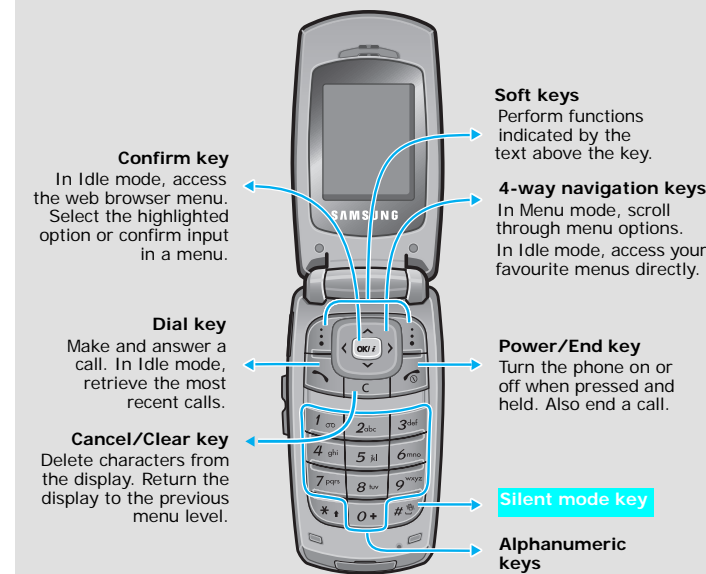


2. When charging is finished, unplug the adapter.



Note: Do not remove the battery from the phone without unplugging the adapter first. Otherwise, the phone may be damaged.

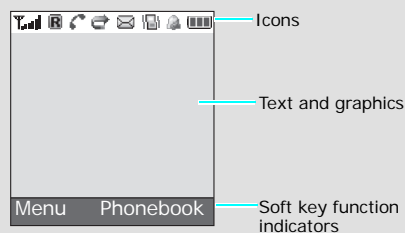
Phone layout and key functions



Silent mode Disable all sounds on the phone, when pressed and held **Ⓜ** in Idle mode. To exit, press and hold the key again.

Display

Your phone is in Idle mode when you are not on a call or using a menu. You must be in Idle mode to dial a phone number.



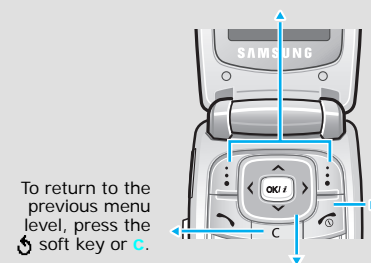
Your phone displays the following status indicators on the top of the screen:

Icon	Description
	Received signal strength
	Call in progress
	Out of your service area; you cannot make or receive calls
	Roaming network
	Silent mode or the call ringer set to Vibration
	Call diverting feature active
	New SMS message
	New MMS message
	New voicemail
	Alarm set
	Battery power level

Using the menus

In Idle mode, press the **Menu** soft key to enter the main menu.

Labels at the bottom corners of the display show the current soft key functions. Press the left soft key (**Ⓜ**) or right soft key (**Ⓜ**) to perform the function indicated.



To return to the previous menu level, press the **Ⓜ** soft key or **C**. To exit the menu without changing the menu settings, press this key.

Use the 4-way navigation keys (**⏪**, **⏩**, **⏴**, **⏵**) as shortcuts to access your favourite menus.

- In Idle mode, press the **Menu** soft key.
- Select **Phone settings** → **Short cut**.
- Select a key.
- Select a menu to be assigned to the key.

To select or modify a menu or feature:

- In Idle mode, press the **Menu** soft key.
- Press the Navigation keys to reach a desired menu and then press the **Select** soft key or **Ⓜ**.
- If the menu contains any submenus, locate the one you want by pressing the Navigation keys. Press the **Select** soft key or **Ⓜ** to enter the submenu.
If the selected menu contains additional submenus, repeat this step.
- Press the Navigation keys to find the setting of your choice.
- Press the **Select** soft key or **Ⓜ** to confirm your chosen setting.

Shortcut numbers

You can quickly access the menu you want by using shortcut numbers. The shortcut number displays in front of the menu name in Menu mode.

Switching on or off the phone

- Press and hold **Ⓜ** for more than one second to switch on the phone.
- To switch off the phone, press and hold **Ⓜ** for more than two seconds.

Changing the display language

- In Idle mode, press the **Menu** soft key.
- Select **Phone settings** → **Language**.
- Select a language.

Making a call

- In Idle mode, enter the area code and phone number, and press **Ⓜ**.
- To end the call, press **Ⓜ**.

Answering a call

- When the phone rings, press **Ⓜ** to answer a call.
- To end the call, press **Ⓜ**.

Menu map

- | | | | |
|---|--|--|---|
| 1. SIM AT *

2. Call records
2.1 Missed calls
2.2 Received calls
2.3 Dialed calls
2.4 Delete all
2.5 Call time
2.6 Call cost* | 4. Sound settings
4.1 Ring tone
4.2 Ring volume
4.3 Alert type
4.4 Keypad tone
4.5 Message tone
4.6 Alert on call
4.7 Folder tone
4.8 Extra tones | 6. Funbox
6.1 WAP browser
6.2 Games
6.3 Sounds
6.4 Images
6.5 Delete all
6.6 Memory status | 8. Phonebook
8.1 Search
8.2 New entry
8.3 Group search
8.4 Edit group
8.5 Speed dial
8.6 Delete all
8.7 Memory status
8.8 SDN * |
| 3. Network services
3.1 Call diverting
3.2 Call barring
3.3 Call waiting
3.4 Network selection
3.5 Caller ID
3.6 Closed user group | 5. Messages
5.1 Text messages
5.2 Multimedia messages
5.3 Push messages | 7. Organiser
7.1 Alarm
7.2 Calendar
7.3 Time & Date
7.4 Calculator
7.5 To do list
7.6 Voice memo
7.7 Currency exchange | 9. Phone settings
9.1 Display settings
9.2 Greeting message
9.3 Own number
9.4 Language
9.5 Security
9.6 Extra settings
9.7 Short cut
9.8 Reset settings |

* Shows only if supported by your SIM card.

