

Quick start guide

CD RDS RECEIVER

DEH-600BT

This guide is intended to guide you through the basic functions of this unit.
For details, please refer to the Operation manual stored in CD-ROM.
Furthermore, manuals are available on the website.

<http://www.pioneer.eu>

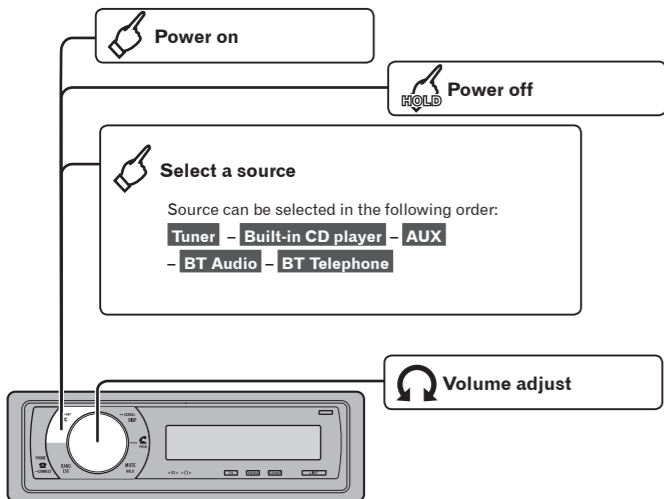
<CRB2594-AN> EW

English

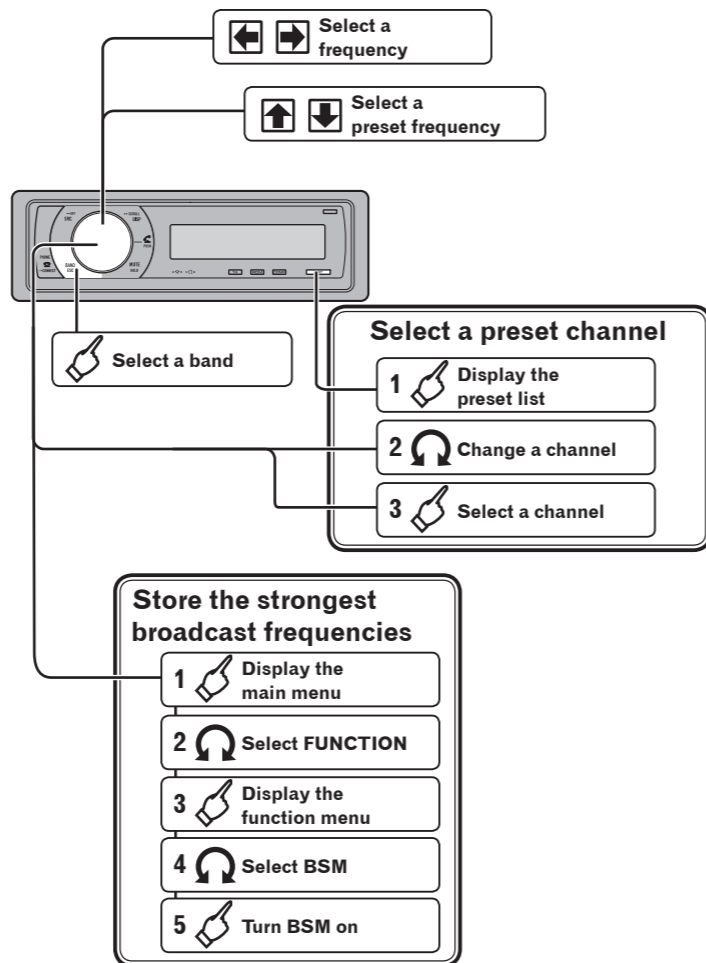
: Press
 : Press and hold
 : Rotate

:
 Push in the direction of the arrow

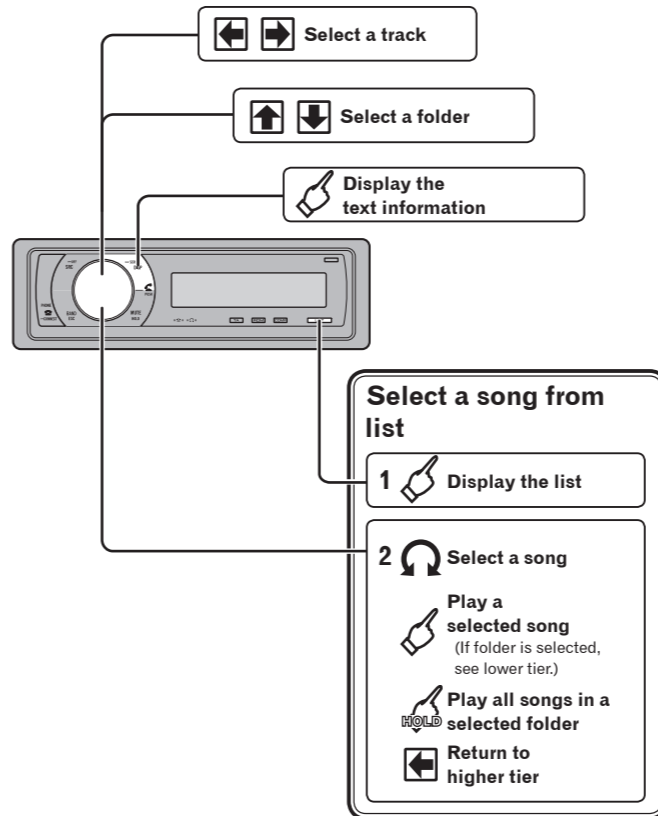
Basic operation



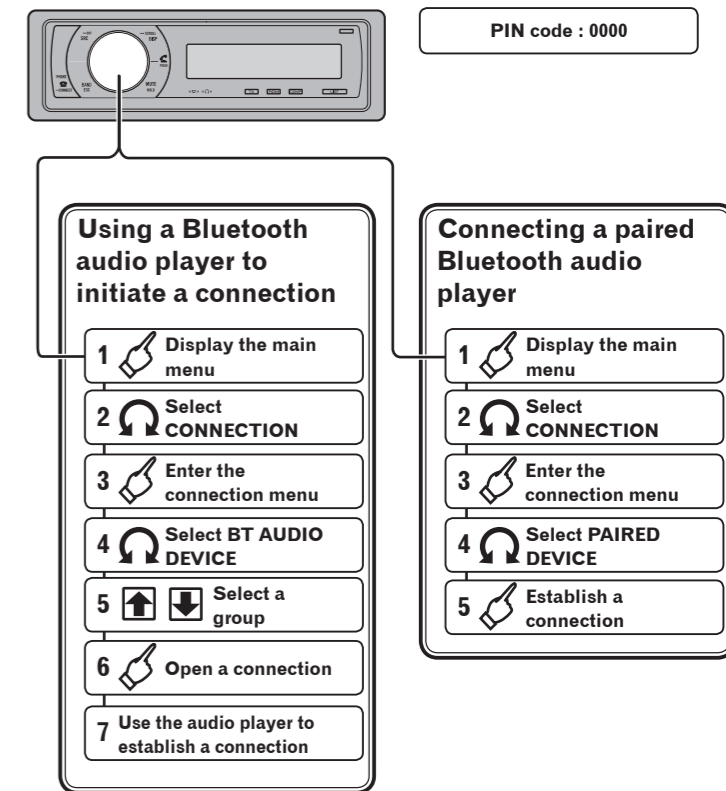
Tuner operation



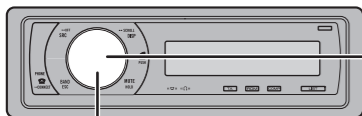
Built-in CD operation



Bluetooth audio connection



Bluetooth telephone connection



PIN code : 0000

Using this unit to initiate a connection

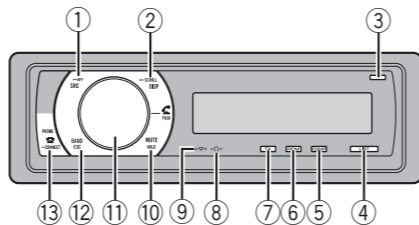
- 1 Display the main menu
- 2 Select CONNECTION
- 3 Enter the connection menu
- 4 Select BT HANDS FREE
- 5 Select a group
- 6 Determine a group
- 7 Select SEARCH DEVICE
- 8 Start searching
- 9 Select a device
- 10 Display the BD address
- 11 Determine the device
- 12 Use your cellular phone to establish a connection

Using a cellular phone to initiate a connection

- 1 Display the main menu
- 2 Select CONNECTION
- 3 Enter the connection menu
- 4 Select BT HANDS FREE
- 5 Select a group
- 6 Determine a group
- 7 Select PAIR FROM PHONE
- 8 Open a connection
- 9 Use your cellular phone to establish a connection

You can also enter into the connection menu by pressing and holding PHONE/CONNECT.

What's what



- ① **SRC/OFF button**
This unit is turned on by selecting a source. Press to cycle through all the available sources.
- ② **DISP/SCROLL button**
Press to select different displays. Press and hold to scroll the text information.
- ③ **OPEN button**
Press to open the front panel.
- ④ **LIST button**
Press to display the track title list, folder title list, file list, preset channel list or phone number list depending on the source.
- ⑤ **COMP/BMX button**
Press to turn COMP (compression) and BMX function on or off.
- ⑥ **RDM button**
Press to turn random function on or off.
- ⑦ **TA/NEWS button**
Press to turn TA function on or off. Press and hold to turn NEWS function on or off.
- ⑧ **"Ω" indicator**
Blinks when your Bluetooth audio player is connected via Bluetooth wireless technology.
- ⑨ **"Σ" indicator**
Blinks when your cellular phone is connected via Bluetooth wireless technology.
- ⑩ **MUTE/HOLD button**
Press to turn off the sound. To turn on the sound, press again. While talking on the phone, press to put the call on hold.
- ⑪ **MULTI-CONTROL**
Move to perform various operations. Turn to increase or decrease the volume.
- ⑫ **BAND/ESC button**
Press to select radio band. Press to return to the ordinary display when operating menu.
- ⑬ **PHONE/CONNECT button**
Press to select the phone as the source. While operating a phone source, press to end a call, reject an incoming call or cancel making a call. Press and hold to perform Bluetooth connection.

Notepad

Notepad