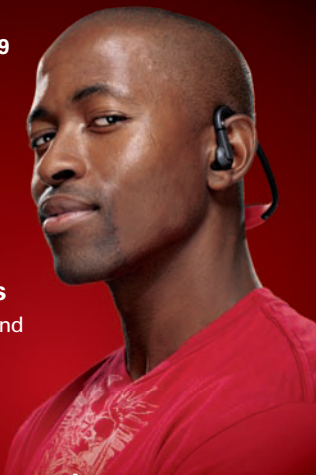




Motorola S9



Integrated Controls

Managing your music and calls right from your S9 with integrated controls

Keep moving to your music...



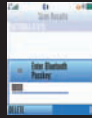
and never miss a call!

For more information, visit www.hellomoto.com/S9

6809510A68-0

Easy Pairing Guide

Creating a connection between your S9 and Bluetooth® enabled phones or other compatible music devices.¹



- Charge** your headphones for at least 2 hours before first use.
- Put S9 in pairing mode by pressing power button for approximately 3 seconds.
- Prepare your phone, music device, computer or *Bluetooth* adapter to search for the S9² :
 - With most **Motorola** phones: Go to Settings > Connections > *Bluetooth* Link > Hands Free > Look for Devices > Motorola S9 > OK or Yes > Enter PIN: **0000** > OK or Yes to bond or connect with S9³
 - For other phones, music devices, *Bluetooth* adapters or computers, consult your manual on how to initiate a *Bluetooth* connection.
- After the S9 light flashes blue and purple it's paired and ready to go!

Note: To turn the S9 On and Off after this initial pairing process, press the power button for 3 seconds. When turned on it will automatically connect to the last mobile phone and/or streaming music source it was connected to. To pair additional devices with the S9, follow the process above with the new device.

¹ Phones with HS and HF profiles will connect with the S9 for use as hands-free devices. The phone must support the A2DP profile to stream stereo music and support the AVRCP profile for remote control. To determine if your Motorola phone supports these profiles, visit the customer support page at: hellomoto.com/Bluetooth.

² Turn off nearby devices you are not pairing to the S9, so they will not interfere with the above pairing process.

³ Consult your Motorola phone manual to learn about playing music from your phone.

The *Bluetooth* trademarks are owned by their proprietor and used by Motorola, Inc. under license. MOTOROLA and the Stylized M Logo are registered in the US Patent & Trademark Office. All other product or service names are the property of their respective owners. © Motorola, Inc. 2007. All rights reserved.