

SAMSUNG

Quick Start Guide

Bluetooth® Mono Headset WEP200

Get connected in 4 quick steps

- 1 Charge your headset
- 2 Put your headset in pairing mode
- 3 Turn on Bluetooth on your phone and pair with headset
- 4 Test and use

Start here →

■ **Headquarters:**
1301 East Lookout Drive Suite 150
Richardson, TX 75082

■ **Internet Address:**
<http://www.samsungmobileusa.com/accessories>

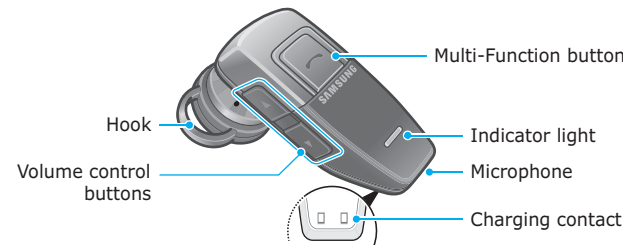
■ **Customer Care Center:**
1-888-987-4357



Guide No. : GH68-11254A
08/2006, Rev. 1.2

Before using your headset

Thank you for purchasing the Samsung Bluetooth Mono Headset WEP200, we hope you will be delighted with its operation. Take a moment before you get started to familiarize yourself with your new headset.



Check the accessories

Make sure you have the following items with your headset:

Set 1:

Charging case, Travel adapter, Manual, 2 headset hooks

Set 2:

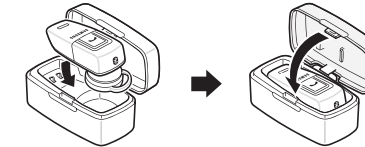
Charging case, Manual, 2 headset hooks
For Set 2, use your phone charger as a power source for recharging.

- NOTE:**
Your headset supports the headset and/or hands-free profile(s).

Charge your headset

Charge the headset's battery fully before using the headset for the first time.

- 1 Put the headset in the supplied charging case and close the cover.



- 2 Plug the travel adapter into the case's charging socket.

- 3 Plug the travel adapter into the electrical outlet.

- For Set 1, use the travel adapter provided.
- Charge the headset until the red light on the headset turns to blue.
- The headset will be fully charged in approximately 2 hours.

- 4 Remove the travel adapter from the case.

- NOTE:**
The headset cannot be used while charging.

Put your headset in pairing mode

Before you can use your headset, you must pair it with your phone.

- 1 Ensure that the headset is off (see **Turn headset on/off** on the reverse side of this guide).
- 2 Press and hold the Multi-Function button until the indicator light turns on in blue (approximately 8 seconds).



The indicator light flashes in blue as you press and hold the Multi-Function button. Continue holding down the button until the blue light is steadily lit.

Turn on Bluetooth on your phone and pair with headset

- 1 Set your Bluetooth phone to discover the headset by following your phone's guide. Typically, the steps involve going to the **Settings**, **Connection**, or **Bluetooth** menu on your phone and then selecting the option to discover Bluetooth devices. Your phone will find the Samsung WEP200 headset.
- 2 Select **Samsung WEP200**.
- 3 When the phone asks if you want to pair with it, confirm by selecting **Yes** or **OK**.
- 4 Enter the headset passkey or PIN, **0000**.

Test and use

Your phone and headset are now paired and ready to make and receive calls. To confirm they are operating properly, make a call:

- 1 Place the headset over your ear. See **Wearing the headset** on the reverse side of this guide.
- 2 On your phone, make a call to the number you want.
- 3 If your phone and headset are successfully paired, you will hear ringing on the headset.

After you have successfully paired your phone and headset, you do not need to repeat these initial setup steps each time you use the headset.

Using your WEP200

See **Features and Functions Guide** on the reverse side of this guide for information on using your WEP200.

Features and Functions Guide

SAMSUNG Bluetooth® Mono Headset WEP200

Important:

Be sure to first follow the Quick Start Guide on the reverse side of this guide to complete initial setup of your headset.

■ **Headquarters:**
1301 East Lookout Drive Suite 150
Richardson, TX 75082

■ **Internet Address:**
<http://www.samsungmobileusa.com/accessories>

■ **Customer Care Center:**
1-888-987-4357



Turn headset on/off

To turn the headset on,

Press and hold the Multi-Function button for 4 seconds until you see 4 blue flashes on the indicator light, then release. You will hear a tone and see the indicator light flashes while the power is on (see **Meaning of the indicator light** of this guide).

To turn the headset off,

Press and hold the Multi-Function button for 4 seconds until you see 2 blue flashes on the indicator light, then release. You will hear series of 2 tones and see the indicator light stops flashing.

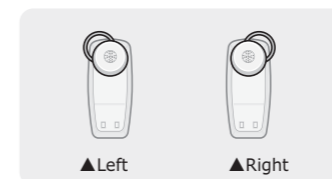
Wear the headset

Wear the headset on your ear. In general, you will get better performance when there are no obstructions (including parts of your body) between the headset and the phone.



Change for use on other ear

Depending on which ear you are going to wear the headset, simply adjust the hook accordingly.



Adjust the volume

Press [▲] on the side of the headset to increase the volume level and press [▼] to decrease the volume level.

Make calls

Making a voice activated call

If the phone's voice recognition feature is on, you can make a voice activated call. Press the Multi-Function button once. You will hear the voice-activation tone. Say the name of the person you wish to call. Depending on your phone, this feature may not be supported.

Redialing the last number

If the phone's voice recognition feature is off, press and hold the Multi-Function button for 2 seconds, twice.

If the phone's voice recognition feature is on,

- 1 Press the Multi-Function button and listen for the voice-activation tone. When you hear it, press the button again to cancel the feature.

- 2 Press and hold the Multi-Function button to access the recent call list.
- 3 Press and hold the Multi-Function button to make a call to the last number you have dialed or received.

End a call

Press the Multi-Function button once.

Answer a call

- After you hear the ring tone, press the Multi-Function button once.
- If you answer the call with your phone, you can transfer the call to the headset by pressing the Multi-Function button.

Reject a call

When you receive a call, press and hold the Multi-Function button for 2 seconds to reject the call. Depending on your phone's setting or type, you may only be able to mute the ringer or this feature may not be supported.

Use enhanced features

Enhanced features are available for phones that support the hands-free Bluetooth profile and enhanced features.

- **Answer a second call** (switching between 2 calls)
When your phone notifies you of another incoming call while you are on a call, press and hold the Multi-Function button for 2 seconds. You can switch between calls by pressing and holding it for 2 seconds. Depending on your phone, this feature may not be supported.
- **Place a call on hold**
While you are on a call, press and hold the Multi-Function button for 2 seconds. To retrieve the call, press and hold the Multi-Function button for 2 seconds again. Depending on your phone, this feature may not be supported.
- **Switch off the microphone**
Press and hold the Up volume control button to switch off the headset's microphone. To switch it back on, press and hold the button again.

Troubleshooting

My phone does not find my headset.

Make sure the blue indicator light on your headset turns on when your phone is searching for devices.

My headset worked before but now it is not working.

Make sure your phone is on and the Bluetooth feature is turned on in your phone. If the Bluetooth feature has been turned off or was turned on only temporarily, you may need to restart the Bluetooth feature. If you have confirmed the Bluetooth feature is on in your phone, pair your phone and headset again.

Meaning of the indicator light

Light	Tone	Status
Flashes in blue every 8 seconds.	Quick series of 2 tones. (Active mode starts.)	The headset is in Active mode. <ul style="list-style-type: none">• The headset has an active call in progress.• You can talk up to 4 hours.
Flashes in blue every 3 seconds.	Quick series of 2 tones. (Standby mode starts.)	The headset is in Standby mode. <ul style="list-style-type: none">• The headset is waiting for a call.• The headset can be in Standby mode up to 70 hours.*
Flashes in red instead of blue.	5 tones every 20 seconds.	The battery of the headset is low. Recharge the battery. <ul style="list-style-type: none">• There is only 1 minute of talk time left.

*Depending on the phone type and usage, the actual time may vary.