



**Apacer**  
*Access the best*

[www.apacer.com](http://www.apacer.com)

 audio  AU524

**MP3**  
▶▶ Player

User Manual

## Notices

### About memory size

1. The actual available memory on the device is less than what is listed on the package. This is due to small discrepancies in file formats and algorithms used by various operating systems. In addition, a portion of memory space is reserved for system files and data sectors for better performance.

### About Battery

2. AU524 has a built-in, high-performance, rechargeable battery. The battery should only be replaced by a qualified technician.
3. The rechargeable battery has a limited number of charge cycles. Battery life and number of charge cycles will vary depending on temperature, usage and settings.
4. If you have problems with battery life or if the battery needs to be replaced, please consult your nearest Apacer dealer.

### About hearing damage

5. To prevent hearing damage, please avoid using the headphones at a high volume. Doctors and hearing experts advised against continuous, loud and extended play

### Others

6. Do not leave the player in a damp environment or in places with temperatures of higher than 35°C or lower than -5°C.
7. Do not use the earphones while driving an automobile or riding a bicycle. Refer to local traffic laws and regulations accordingly.
8. Exercise caution when using earphones while walking down or crossing streets.
9. The player package uses cardboard, polyethylene and other non-hazardous materials.

## Table of Contents

<b>1</b>	<b>Package contents</b> .....	<b>4</b>
1.1	Optional accessories .....	4
<b>2</b>	<b>Buttons and functions</b> .....	<b>4</b>
<b>3</b>	<b>Playing MP3 files</b> .....	<b>4</b>
3.1	To play music/audio files:.....	4
<b>4</b>	<b>Changing MP3 playback settings</b> .....	<b>4</b>
4.1	To repeat playing audio files: .....	5
4.2	To select an equalizer setting: .....	5
4.3	To turn the 3D audio settings on or off:.....	5
4.4	To adjust the play rate: .....	5
4.5	To adjust the intro settings: .....	5
4.6	To change the display:.....	6
4.7	To use A-B repeat mode:.....	6
<b>5</b>	<b>Adding or removing MP3 files</b> .....	<b>6</b>
<b>6</b>	<b>Navigating the menus</b> .....	<b>6</b>
<b>7</b>	<b>Adjusting the volume</b> .....	<b>6</b>
<b>8</b>	<b>Recording voice</b> .....	<b>6</b>
<b>9</b>	<b>Tuning to FM radio</b> .....	<b>7</b>
9.1	Presetting FM stations .....	7
<b>10</b>	<b>System menu</b> .....	<b>8</b>
10.1	Power.....	8
10.2	Language.....	8
10.3	Display .....	8
10.4	Sys Tools .....	8
10.5	Storage .....	9
<b>11</b>	<b>Installing the player driver for Windows 98SE</b> .....	<b>10</b>
<b>12</b>	<b>Format the MP3 player</b> .....	<b>10</b>
<b>13</b>	<b>Technical Specifications</b> .....	<b>11</b>
<b>14</b>	<b>Q&amp;A</b> .....	<b>12</b>

## 1 Package contents

- Installation CD
- USB cable
- Earphone
- Quick start guide

### 1.1 Optional accessories

- Battery charger
- microSD™ card

## 2 Buttons and functions

Keys	Functions
R/V	Record mode or volume mode
←←	Forward
▶	Play/Pause/Confirm/Power on and off
▶▶+	Backward
M	Menu button
HOLD▶	MP3 lock button

## 3 Playing MP3 files

### 3.1 To play music/audio files:

1. Connect the earphone plug to MP3 player earphone jack.
2. Move the **HOLD ▶** switch to unlock position.
3. Press **▶||** for three seconds to turn the MP3 on.
4. Press **M** to enter the main menu.
5. Briefly press **▶▶+** or **←←** to select **Music** mode.
6. Briefly press **▶||** to confirm.
7. Briefly press **▶||** to start playing MP3 files.

## 4 Changing MP3 playback settings

While in play mode, briefly press **M** to enter the sub-menu, then briefly press **▶▶+** or **←←** to select the settings you want to adjust. You can change the **Repeat**, **Equalizer**, **3D**, **Play Rate**, **Intro**, **Display**, **A-B repeat** and **File Browser** settings from the sub-menu.

When in the sub-menu:

Do this	To
Briefly press ►	Confirm selection
Briefly press <b>M</b>	Return to the main menu
Briefly press ►	Pause the MP3 file being played
Briefly press ►   again	Resume playing the MP3 file
Press ►►+ or ◀◀	Select the next or the previous MP3 file
Press ►   for 3 sec	Turn the MP3 player off

#### 4.1 To repeat playing audio files:

1. Select repeat mode and briefly press ►|| to enter into.
2. Briefly press ►►+ or ◀◀ to select your repeat option. Refer to the table below for details.

Select this	To
No repeat	Play all MP3 files in all directories once
One	Repeat the playing MP3 file continuously
All	Repeat playing all MP3 files in all directories
Random All	Randomly play all songs in all directories
DIR Repeat	Play all songs in the current directory
DIR All Repeat	Play and repeat playing all songs in the current directory
DIR Random All	Randomly play and repeat playing all MP3 files in the current directory

3. Briefly press ►|| button to confirm.

#### 4.2 To select an equalizer setting:

1. Select **Equalizer** from the sub-menu, then briefly press ►||.
2. Briefly press ►►+ or ◀◀ to select an equalizer setting. You may choose from six preset equalizer modes: Normal, Pop, Rock, Classic, Jazz ,Bass and Custom EQ
3. Briefly press ►|| to confirm.

#### 4.3 To turn the 3D audio settings on or off:

1. Select **3D** from the sub-menu, then briefly press ►|| to enter.
2. Briefly press ►►+ or ◀◀ to turn the 3D audio settings on or off. Press ►|| to confirm.

#### 4.4 To adjust the play rate:

1. Select **Play Rate** from the sub-menu, then briefly press ►|| to enter.
2. Briefly press ►►+ or ◀◀ to select from five play rate options: 1.00X, 1.14X, 1.33X, 0.67X, and 0.80X.
3. Briefly press ►|| button to confirm.

#### 4.5 To adjust the intro settings:

1. Select **Intro** from the sub-menu, then briefly press ►||.
2. Briefly press ►►+ or ◀◀ to set the intro time to 00 to 15 seconds.
3. Briefly press ►|| button to confirm

#### 4.6 To change the display:


1. Select **Display** from the sub-menu, then briefly press **▶||**.
2. Briefly press **▶▶** or **◀◀** to select from three display options: Off, Wave motion or Stereo.
3. Briefly press **▶||** button to confirm.

#### 4.7 To use A-B repeat mode:

1. Select **A-B** from the sub-menu, then briefly press **▶||**.
2. Briefly press **R/V** to select the A point.
3. Briefly press **R/V** to select B point.
4. Briefly press **R/V** to cancel A-B repeat mode.

### 5 Adding or removing MP3 files



To add files to or remove files from the MP3 player:

1. Insert the USB plug to a USB port in your computer.
2. Locate the MP3 storage folder.
3. Add or remove MP3 files to or from the storage folder.
4. Close the storage folder, then right click on  from the taskbar.
5. Follow screen instructions for safe removal of USB peripherals.
6. Disconnect the MP3 player from the USB port.

### 6 Navigating the menus

Refer to the table of button functions below when navigating the main menu.

Do this	To
Press <b>M</b> *	Enter main/sub-menu or return to the previous menu
Press <b>▶  </b>	Confirm menu selection
Press <b>▶▶</b> or <b>◀◀</b>	Shift menus

\* Press and hold **M** to check the microSD card mode. If you see  it is in the microSD card mode, if you see , you are in the onboard flash mode. For more details please refer to section 10.7 Storage.

### 7 Adjusting the volume

To adjust the volume when in play or RPL mode, briefly press **R/V**, then briefly press **▶▶** to increase the volume or **◀◀** to decrease the volume.

### 8 Recording voice

To create voice recordings:

1. Briefly press **M** to enter the main menu.
2. Briefly press **▶▶** or **◀◀** to select **RPL** mode, then press **▶||** to confirm.
3. Press and hold **R/V** to start recording.

4. Briefly press **▶||** to pause recording or briefly press **R/V** button to save the recording.
5. Briefly press **▶||** button to play the recording.
6. To change the recorded voice settings such as repeat, play rate, etc., Briefly press **M** button to enter the sub-menu. Refer to section 4 for details.

## 9 Tuning to FM radio

To access the FM radio menu:

1. Briefly press **M** button to enter main-Menu.
2. Briefly press **▶▶** or **◀◀** button to select **FM Radio** mode, then briefly press **▶||** to confirm.

### 9.1 Presetting FM stations

To preset FM stations using **Automatic Search**:

1. When in **FM Radio** mode, press **▶||** to enter the sub-menu.
2. Press **▶▶** or **◀◀** to select **Auto Search**, then press **▶||** to select.
3. The player automatically searches for 20 FM stations. After the search, the player tunes in to the first station.
4. Press **▶||** to enter the sub-menu, then select **Save** to preset the station you are currently tuned in or **Save All** to preset all stations found.
5. When you select **Save**, press **▶||** to display numbers 01...30 on the screen.
6. Use **▶▶** or **◀◀** to assign a preset station number to the selected station.
7. Press **▶||** to confirm, then press **M** to exit.



#### NOTE

**You must turn the player on while charging the battery. You can only preset one station at a time. After the player finishes searching the stations, press **▶▶** to move to the next station, then follow steps 5 to 7 of the previous section to save the station.**

To preset FM stations using **Manual Search**:

1. When in **FM Radio** mode, press **▶||** to enter the sub-menu.
2. Press **▶▶** or **◀◀** to select **Manual Search**, then press **▶||** to select.
3. Press **▶▶** or **◀◀** to scan the frequencies at 0.1 MHz interval.
4. When you find the station you want to save, press **▶||** to enter the sub-menu.
5. Select **Save**, then press **▶||**.
6. Assign a preset station number to the station by pressing **▶▶** or **◀◀**.
7. Press **▶||** to confirm, then press **M** to exit.
8. Repeat the instructions when manually selecting and presetting FM radio stations.

To delete preset FM stations:

1. In the **FM Radio** sub-menu, select **Delete** (deletes the selected preset station) or **Delete All** (deletes all preset stations).
2. Press **▶||** to delete, then press **M** to exit.

## 10 System menu

This menu allows you to change various MP3 player settings. To access the **System** menu:

1. Press and hold **M** to enter the main menu.
2. Briefly press **▶▶** or **◀◀** to select **SYS** mode, then press **▶||** to confirm.
3. Press **▶▶** or **◀◀** to select the settings you want to change. Options include **Power**, **Language**, **Display**, **Sys Tools** and **Storage**.
4. Briefly press **▶||** to confirm.

### 10.1 Power

Briefly press **▶▶** or **◀◀** to select from two power settings: **Auto off: 000** and **Always on in playback**. When you select **Auto off: 000**, press **▶▶** or **◀◀** to set the desired time before the player turns off automatically. (000 represents minutes. When you set the timer to 002, the player turns off automatically after two minutes in idle mode.)

### 10.2 Language

To select the language:

1. Select **Language** from the System menu, then briefly press **▶||** to confirm.
2. Briefly press **▶▶** or **◀◀** to select from the following languages: English, Chinese (Simplified), Chinese (Traditional), Czech, Danish, Finnish, French, German, Greek, Hungarian, Italian, Japanese, Korean, Norwegian, Polish, Portuguese, Russian, Spanish, Swedish, Turkish, Ukrainian, Holland, Arabic or Thai.
3. Briefly press **▶||** to confirm.

### 10.3 Display

Briefly press **▶▶** or **◀◀** to select **Contrast** or **Backlight** from the **Sys Tools** menu. Adjust the settings by briefly pressing **▶▶** or **◀◀** until reaching the desired LCD contrast or backlight.

### 10.4 Sys Tools

To access the system tools, briefly press **▶▶** or **◀◀** to select from four system tools: **Del File**, **Format**, **Reset** and **System Info**.



To delete files:

1. Select **Del File** from the **Sys Tools** menu, then press ►|. All DIR shows on screen.
2. Press ►+ or ◀◀ to find the file (s) you want to delete, then press push ►|. A confirmation message appears.
3. Press ►+ or ◀◀ to delete the file or cancel the operation.
4. Press ►| to confirm the deletion.

To format the player storage:

1. Select **Format** from the **Sys Tools** menu, then press ►|.
2. Briefly press ►| to enter the sub-menu and select from two format types: Quick or Complete.
3. Briefly press ►+ or ◀◀ to select the format type, then briefly press ►+ or ◀◀ confirm or cancel formatting.
4. Briefly press ►| to confirm.



#### NOTE

**Quick format is faster than complete (total) format. You will lose all files in the player when you format the storage.**

To use other system tools:

1. Select **Reset** or **System Info** from the **Sys Tools** menu, then press ►|.
2. If you selected **Reset**, briefly press ►+ or ◀◀ to confirm a device reset or cancel the operation. If you selected **System Info**, press ►+ or ◀◀ to select from three system information: FW, CHIP and FREE.

## 10.5 Storage

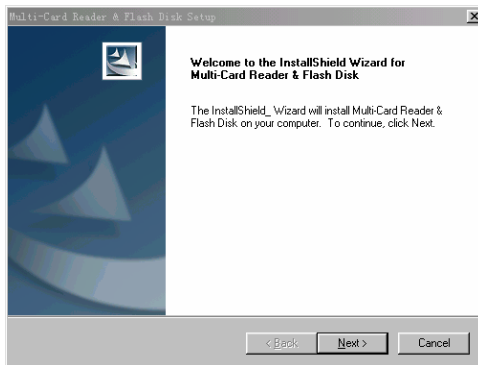
To check for available storage:

1. Select **Storage** from the Sys Tools menu, then press ►|.
2. Briefly press ►+ or ◀◀ to select from Internal or microSD Card memory.
3. Briefly press ►| to confirm. The screen displays the used and available storage space of the selected medium.

## 11 Installing the player driver for Windows 98SE

If your computer is operating on Windows 98SE, you must install the player driver from the support CD that came with your MP3 package. To do this:

1. Place the installation CD to the computer optical drive.
2. Explore the contents of the CD, then double-click on the file: X:/disk/driver/MP3/SETUP.EXE file.



3. Click **NEXT** to continue installation.
4. Follow screen instructions to finish installation.
5. Restart the computer, then check if the system recognizes the player.

## 12 Format the MP3 player

The MP3 player storage is in FAT format. When formatting the MP3 player storage, select FAT as the format type for maximum compatibility.



### NOTES

- Unlock the Hold button before use.
- The EQ settings do not show when playing WMA files.
- The player can access up to 5 directory levels.
- When used as USB disk drive, you can write-protect the disk by switching **HOLD** ▶ to the lock position.

## 13 Technical Specifications

Name	Description
Dimensions	84 x 28 x 11mm
Weight	28g
Memory	Up to 1 GB microSD™ card Up to 2 GB built-in flash memory
USB interface	USB 2.0
LCD display	128 x 64 with 2-color (yellow and blue) OLED
Power supply	Built-in rechargeable 280mA Li-Polymer battery
S/N ratio	> 85 dB
Audio frequency range	20 Hz ~ 20 kHz
Equalizer settings	Normal, Pop, Rock, Classic, Jazz, Bass, Custom EQ
Decoding format	MP3 (MPEG 1.0/2.0/2.5 Layer 1/2/3, ID3 display supported) and WMA
File system	FAT16, FAT32
File number/folder	9999 files (max) / 5
Operating temperature	5°C ~ 35°C (41°F ~ 95°F)
Operating moisture	10 % ~ 75%
Earphone max. output	(L) 10mW + (R ) 10mW / 32 Ohms
Battery life	Maximum of 8 hours music playback time
Support O/S	Windows 98(SE)/ME/2K/XP

## 14 Q&A

Q: Why we see no display after turning on the Audio Steno?

A: Check whether it is necessary to recharge / replace the battery.

Q: Why are the buttons not working?

A: Check whether the HOLD button is set to the locked position.

Q: Why we hear no sound when playing MP3 files?

A: Check whether the volume is at an audible level.

Q: Why we cannot see the playback time for some songs?

A: Some MP3 or WMA files are in the VBR compression format. The Audio Steno cannot show the playback time of these files. You may want to compress these files again with normal rating.

Q: Why we cannot play some of the MP3 songs?

A: The Audio Steno supports MPEG1 Layer III (MPEG3) and WMA format only, and may not be able to play songs of other formats. Convert your file to a proper format before playing the song.

Q: Why can't I use the Audio Steno when it is connected to a PC?

A: For Windows 98/98SE, please install driver first and the PC should detect the Audio Steno automatically. For firmware update and format purpose, it is highly **recommended** to install the provided software.

Q: Why does the available memory capacity of the Audio Steno reported by your operating system is different from that printed on the package?

A: For different file systems and algorithms, the firmware of the Audio Steno is loaded into the flash memory and a portion of the memory is reserved for system files and error blocks. As a result, the available memory for users may be slightly lower than the total memory capacity.

### **Service and Support**

Please contact our local distributor or our customer service, if your have any technical problems.

Customer Service Center

[http://www.apacer.com/en/support/technical\\_support.asp](http://www.apacer.com/en/support/technical_support.asp)

For Technical Support Materials Download, please visit

<http://www.apacer.com/en/support/downloads.asp>

For the Audio Steno Product Information, please visit

[http://www.apacer.com/en/products/MP3\\_Players.htm](http://www.apacer.com/en/products/MP3_Players.htm)