

audio **SIENNO**
AU840
User Manual



For your Safety

Warning

- To prevent electric shock or other injury, please do not disassemble or repackage this product.
- To prevent a fire, electric shock, or device malfunction, please do not use this product in a wet environment such as a bathroom.
If the product gets wet, do not turn it on. Contact a Service Center.
- Do not leave the player in areas above 40°C (104 °F). Such as inside a sauna or parked car.
- This product is an electronic device; please avoid dropping it or subjecting it to other severe shock.
- For your safety and the safety of others, do not use headphones while driving, cycling or conducting any other similar activities.
- Avoid using your player at high volume levels, as it may result in permanent hearing damage. If you experience ringing in your ears while using the earphones, remove the earphones immediately and lower the volume.

Notice

- Do not knock or hit the player. Be especially careful not to shake TFT screen to avoid damaging or causing abnormal functioning of the TFT display.
- Do not dismantle the player personally or use alcohol, thinner or benzene to clean the surface of the player.
- Do not disconnect the player while formatting, uploading or downloading, otherwise it may cause a program error
- When transferring files, do not turn the power off or restart this device. No responsibility is provided for any damage to or loss of any program, data, or other information stored on any media or any part of this device serviced hereunder.
- Battery service life may vary according to actual using conditions, manufacturer and manufacturing date.
- The player begins recharging once it is connected to the USB port of a standard computer, whether it is powered on or not.
- Please recharge the device when:
 - A. Battery electricity icon displays no electricity.
 - B. Player refuses to power on.
 - C. Player functions normally, but it quickly powers off automatically.
 - D. There is no response when pressing the keys.

Table of contents

For your Safety	
Chapter 1. Introduction	5
Chapter 2. Product Features	5
Chapter 3. Diagram of the player	6
Chapter 4. Package Contents	6
Chapter 5. Screen Description	6
Music Playing Mode	6
REC Mode	6
Video Playing	7
FM Mode	7
Picture Browsing	7
Chapter 6. Basic Functions	7
Power On/Off	7
Hold On/Off	7
Charging the Battery	8
Connect to Computer and Data File Transmission	9
A-B Repeat Function	9
Volume Control	9
Chapter 7. System Menu	10
Main Menu	10
Settings	10
Music	10
FM Radio	10
Record	10
Display	10
System	10
Power Off Timer	11
Language	11
Chapter 8. Listening to Music	11
Play/Stop	11
Lyrics Display	11
Music Settings	11
Repeat Mode	12
Play Mode	12
EQ Select	12
User EQ	12
Chapter 9. FM	13
FM Radio	13
Manual Search	13
Auto Search	13
Listen to FM	13
Deleting a channel	13
FM settings	14

Chapter 10. Picture	14
Picture Browsing	14
Chapter 11. Text	14
Download TXT File.....	14
Read File.....	14
Bookmark Setup	15
Chapter 12. Recording.....	16
Recording Mode.....	16
REC settings	16
Chapter 13. Navigation	16
Navigation	16
Open folders and Play or Delete files	17
Chapter 14. DRM-9 Function	17
DRM-9 Transfer Instructions.....	17
Operation introduction:.....	17
Chapter 15. Convert and Play Video File	17
Install the AVI converter.....	17
Conversion:.....	19
Chapter 16. Upgrading Player Firmware	19
Chapter 17. Troubleshooting	20
Chapter 18. Service and Support.....	21
Chapter 19. Product Specifications.....	21

λ **Chapter 1. Introduction**

Congratulations on your purchase of the Apacer Audio Steno MP4 Player.

Before operating the unit, please read this manual thoroughly and keep it for future reference. This manual will help you learn to use many of the exciting features of this device and make your experience more enjoyable.

This manual contains important safety measurements and operational information, so please read all the information carefully before you use the device in order to avoid any unexpected accidents.

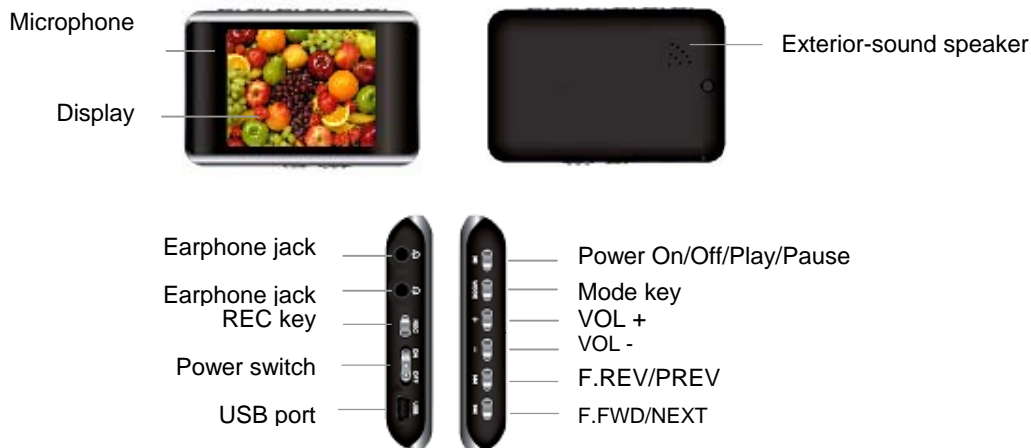
We make no representation for the errors, omissions or updates of this document. We also make no representation for the data or music files lost of the player.

Microsoft Windows Media and Windows are trademarks of Microsoft Corporation. Trademarks of other products mentioned in this user's manual are owned by their respective companies or organizations.

λ **Chapter 2. Product Features**

- Full-featured MP4 player with large 2.2" TFT display
- Smooth video playback
- Built-in high-quality stereo speakers, dual earphone output jacks
- Rubber surface finish is comfortable to the touch
- Built-in high-performance Li-battery for continuous playing for up to 8 hours

● Chapter 3. Diagram of the player

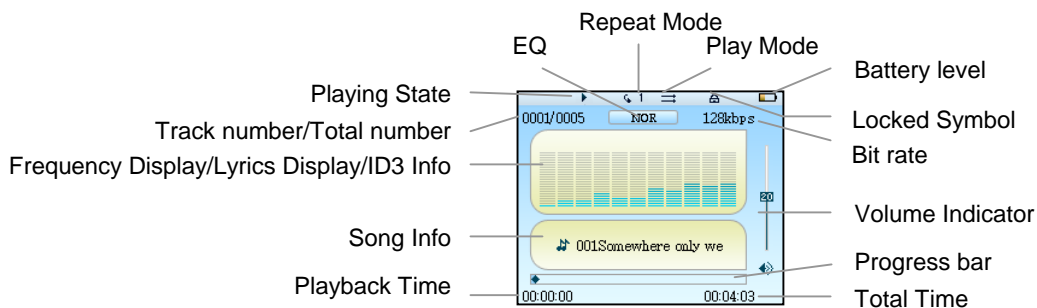


λ Chapter 4. Package Contents

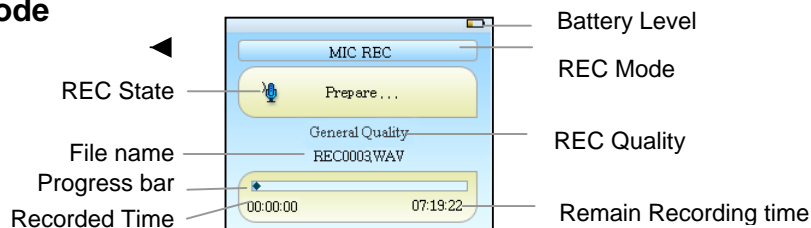
- Audio Steno AU840 MP4 Player x 1
- Earphones x 2
- USB cable x 1
- Installation CD x 1
- Quick Start Guide x 1
- Carrying Bag x 1

λ Chapter 5. Screen Description

● Music Playing Mode



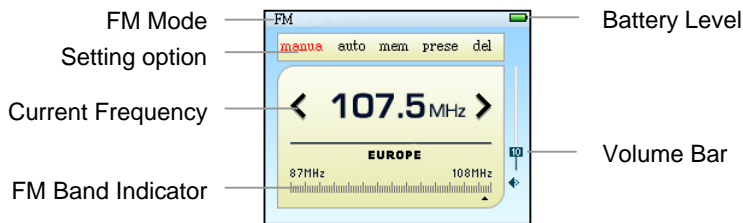
● REC Mode



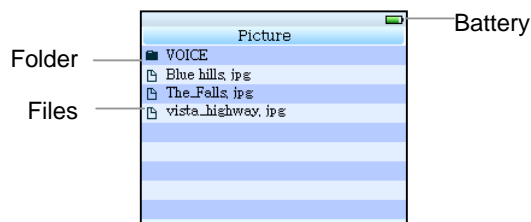
● **Video Playing**



● **FM Mode**



● **Picture Browsing**



λ **Chapter 6. Basic Functions**

● **Power On/Off**

Power On:

Push the power switch of player to the **ON** position
Press and hold ►|| key for 3 seconds, Power is turned on.

Power Off:

Press and hold ►|| key for 3 seconds, Power is turned off.

● **Hold On/Off**

Follow the below steps to enable the Hold function to avoid accidental key presses and operation.

Hold On: hold press ►|| and ►► key to lock the player.

Hold Off: hold press ►|| and ►► key again to unlock the player.



Locked



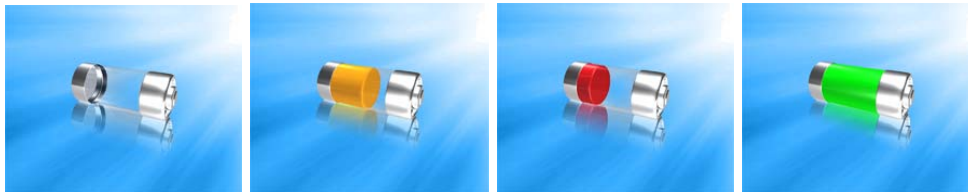
Unlocked

● **Charging the Battery**

1. Connect the USB cable to your MP4 player, then connect the other end of the USB cable to the USB port on your PC.
2. Computer and USB cable image appears on the screen display of the MP4 player to confirm USB power supply.



3. The battery icon will display total charge. After charging, the battery icon will display a full bar. (This picture can't be seen in the On-line mode).



4. It takes about 3 hours to fully charging the battery. **Do not overcharge the battery (more than 10 hours)**. Excessive charging or discharging may shorten the battery's life.

Note: Fully charge the rechargeable battery before using the player for the first time or after it has not been used for a while.

- **Connect to Computer and Data File Transmission**

1. Connect the USB cable to your MP4 player, then connect the other end of the USB cable to the USB port on your PC.
2. Computer and USB cable image appears on the screen display of the MP4 player to confirm USB power supply and USB data transmission connection.
3. Select and organize files and folders in preparation for transfer to your MP4 player.



Note: Make sure the power switch is on the “Off” position before connecting to the PC. The “ON/OFF” switch ceases to function after being connected to a PC.

- **A-B Repeat Function**

1. Play a file of your choice
2. Press the **[REC]** key at the beginning of the section you want to repeat. The starting point is set and the “**A-**” icon will appear in the screen display window.
3. Press the **[REC]** key again to set the ending of the section you want to repeat. “**A-B**” will appear in the screen and the specified section will begin to play repeatedly.
4. Press the **[REC]** key again during the section to cancel the section repeat function.

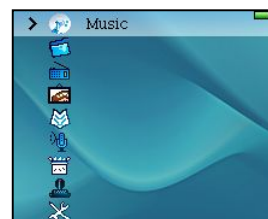
- **Volume Control**

In Music, Voice or Video mode, short press the **[+]** or **[-]** keys to increase or decrease the volume. Hold the key to continually increase or decrease the volume.

λ Chapter 7. System Menu

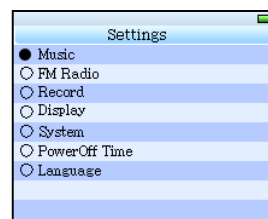
● Main Menu

1. In the Main menu, press **◀** or **▶** key to select your desired option among [Music] / [Video] / [FM] / [Picture] / [Text] / [Record] / [Navigation] / [Settings]
2. Press **◀** or **▶** key, and press the [MODE] key to enter the option submenu, hold press the [MODE] key to exit the submenu and return to the Main menu.



● Settings

1. In the Main menu, press **◀** or **▶** key to select the “Settings” option, press the [MODE] key to enter “Settings” submenu.
2. Press **◀** or **▶** to select a sub-option, press [MODE] key to enter the settings interface, press [MODE] key again to save the settings.
3. Hold press the **▶** key to return to the “Settings” submenu.



● Music

There are 4 sub-options for this setting: “Repeat Mode”, “Play Mode”, “EQ Select”, and “User EQ Set”.

For details, please see the section: “Music settings” in chapter “Listen to Music”.

● FM Radio

There are 2 sub-options for this setting: “Stereo SW” and “FM Region”.

For details, please see the section: “FM”.

● Record

There are 2 sub-options for this setting: “REC Quality” and “REC Volume”.

For details, please see the section: “Record settings” in chapter “Record”.

● Display

Blight Time (Backlight time): 6 options: 5 sec., 10 sec., 15 sec., 20 sec., 30 sec., and Always On.

Lum (luminance): 5 options: 5, 4, 3, 2 and 1. The higher level, the brighter the luminance.

Blight mode (Backlight mode): 2 options: Normal and Power Save.

● System

3 sub-options: About, Update, and Default Set.

About: Displays player firmware version, version date, total memory / remaining memory. Press [MODE] key to exit.

Upgrade: A “Warning window” will pop up to confirm whether you want to upgrade the firmware. Select “Yes” and press [MODE] key to upgrade, select “No” to Exit.

Default settings: A “Warning window” will pop up to confirm whether you to restore the factory default settings, Select “Yes” and press [MODE] key to restore or select “No” to Exit.

- **Power Off Timer**

There are 6 options: OFF, 10 Minutes, 15 Minutes, 30 Minutes, 60 Minutes and 120 Minutes.

- **Language**

This MP4 player supports multiple languages.

λ Chapter 8. Listening to Music

- **Play/Stop**

1. Connect the earphones, then turn on the player, and check the battery.
2. Press the ◀◀ or ▶▶ key to select the “Music” option in the Main menu, press [MODE] key to enter into music playing mode.
3. Press ▶|| key to pause music, press ▶|| key again to unpause music.
4. In playing mode, press the ◀◀ or ▶▶ key to select previous or next track.
5. In playing mode, hold press the ◀◀ or ▶▶ key to rewind or fast forward this track.
6. Hold press the [REC] button to switch between the frequency display and ID3 Info/lyric display.

- **Lyrics Display**

1. Save the lyrics files into your MP4 player with same name as the music file, in *.LRC format.
2. Refer to the above operation to operate the Lyric Synchronous Display.

The player only supports the Lyric Synchronous Display of files that share the same name as the MP3 format file, e.g., the music file is named “Angel.mp3”, the LRC file must be named “Angel.lrc”, they must also be in the same directory.

- **Music Settings**

1. Select the “Settings” option in the main menu, press ◀◀ or ▶▶ key to select the “Music” option, Press [MODE] key to enter into the “Music” submenu.
2. There are 4 sub-options: Repeat Mode, Play Mode, EQ Select, and User EQ Set.

- **Repeat Mode**

7 options listed as below.

1. **Once**: only play current track once
2. **Repeat 1**: Repeat a single song
3. **Folder Once**: Play every song in the folder once
4. **Folder Repeat**: Repeatedly play every song in the folder
5. **All Once**: Play every song once
6. **All Repeat**: Repeatedly play every song
7. **Intro**: Play the first 10 seconds of every song

- **Play Mode**

Order: play the songs in sequence.

Shuffle: play the songs in a random order.

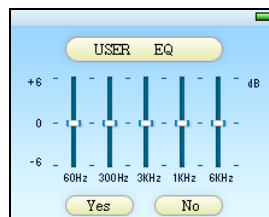
- **EQ Select**

There are 7 EQ selections including: Normal, 3D, Rock, Pop, Classic, Bass, Jazz.

- **User EQ**

In this mode, you can manually optimize your EQ.

1. Press [+] or [-] key to shift horizontally, press ◀◀ or ▶▶ key to adjust vertically.
2. Select "Yes" to save the setting.



λ Chapter 9. FM

● FM Radio

1. Select the “FM” option in the Main Menu.
2. There are 5 options: Manua (manual), Auto (automatic), Mem (memory), Prese (preset), and Del (delete).

Note: If these 5 options not appear, please press the [MODE] key again to open submenu.

● Manual Search

1. In “FM” mode, press ◀◀ or ▶▶ key and press [MODE] key to select the “Manua” option,
2. Press ◀◀ or ▶▶ key to manually select frequency channels.

● To save the channel:

1. Press [MODE] key to open FM submenu,
2. Select “mem” and press [MODE] to open “Save Channel” window
3. Press [+] or [-] key to select any of “Empty” preset channels, press ▶▶ key to select “Yes” to save the channels in sequence, select “No” to cancel
4. Press [MODE] to exit.

Note: This player can save a maximum of 30 channels.

● Auto Search

1. In “FM” mode, press ◀◀ or ▶▶ key and press [MODE] key to select “Auto” option.
2. The MP3 player will search and save channels automatically in sequence.
3. After a total of 30 channels have been saved, the player will automatically switch to “preset” mode and play channel 01.

● Listen to FM

1. In “FM” mode, press ◀◀ or ▶▶ key and press [MODE] key to select “Prese” option.
2. Press ◀◀ or ▶▶ key to select the saved channels to listen.

Note: There is must more channels saving for selecting.

● Deleting a channel

1. In “FM” mode, press ◀◀ or ▶▶ key and press [MODE] key to select “Del” option.
2. Press [+] or [-] key to select the channel you want to delete.
3. Press ▶▶ key to select “Yes” to confirm the deletion or “No” to cancel.

- **FM settings**

1. Select the “**Settings**” option in the main menu, press **◀** or **▶** key to select “FM Radio” option and press **[MODE]** key, there are two sub options:

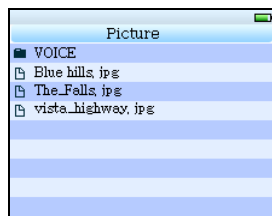
Stereo SW: Press **[MODE]** key to select Stereo ”On” or “Off”.

FM Region: There are several options: China, Europe, Japan and U.S.A. From 87MHz to 108MHz, and from 76 MHz to 90 MHz for the Japan band.

λ Chapter 10. Picture

- **Picture Browsing**

1. In the Main menu, press the **◀** or **▶** key to select the “Picture” option, then press **[MODE]** key to enter into Picture mode, shown as follows:



2. Press the **◀** or **▶** key to select a picture, then press **[MODE]** key to display, now you can press **◀** or **▶** key to browse through other pictures.
3. Press **[MODE]** key again to exit.

Note: this player supports JPEG pictures.

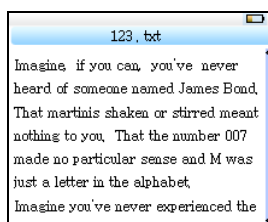
λ Chapter 11. Text

- **Download TXT File**

1. Connect the player to your computer, select the desired file to download and save the file as TXT format in the MP4 player.

- **Read File**

1. In the Main menu, press the **◀** or **▶** key to select “Text” option, then press **[MODE]** key to enter into the “Text” window.
2. Press the **◀** or **▶** key to select the desired file to be read, and then press **[MODE]** key to read.
3. Press the **◀** or **▶** key to turn the page. Hold press **◀** or **▶** key to quickly rewind or fast forward through the pages.



Note:

1. This player only supports “ANSI” format TXT files, other file formats are not supported.
2. If file size is over 400KB, it may display slowly. We suggest you store file sizes around 400KB or less.

● **Bookmark Setup**

1. You can set bookmarks in reading mode, press ◀◀ or ▶▶ or [+] or [-] keys to select bookmark location on the first line of the screen.
2. Press ▶|| key to set, press [MODE] key to save.
3. Select another bookmark, press [REC] to open the bookmark window, press [+] or [-] key to select desired bookmark, press [MODE] key to confirm.

Note: Specified bookmarks can be overwritten, but not deleted.

λ Chapter 12. Recording

● Recording Mode

1. In the Main menu, press the **◀** or **▶** key to select “**Record**” option, and then press **[MODE]** key to enter into the “Record” window.
2. For “**MIC REC**” record mode, enter the “**MIC REC**” window; “**Prepare...**” is displayed on the screen.
3. Press **[REC]** key to start recording, press **[REC]** key again to pause, “**Recording**” or “**REC PAUSE**” is displayed on the screen.
4. Hold press the **[REC]** key to save the recorded file and it will display “**Saving File**” while saving, then prepare to record the next file.
5. Hold press the **[MODE]** key to exit REC mode.



● REC settings

1. Select the “**Settings**” option in the main menu, press **◀** or **▶** key to select “**Record**” option and press **[MODE]** key, there are 2 sub options: “**REC Quality**” and “**High Quality**”.

REC Quality: the “High Quality” option produces larger REC file sizes with better quality, while “General Quality” produces smaller file sizes with lower quality sound.

REC Volume: 5 options: +1, +2, +3, +4 and +5. The higher level has the higher recorded volume.

Note:

You can also find and play the recorded files in the Music Play menu.

If the screen displays “Full Space”, it indicates that there is no memory remaining for new recording files, please delete some files to free up some memory.

λ Chapter 13. Navigation

● Navigation

1. Navigation is one function.
2. In the Main menu, press the **◀** or **▶** key to select “Navigation” option, then press **[MODE]** key.
3. Navigation allows you see file types, structure and contents more clearly, it is useful for file management and searching for file content types.

- **Open folders and Play or Delete files**

1. **Open folders:** In “Navigation” Mode, you can select a folder and press [MODE] key to see its contents.
2. **Play File:** In “Navigation” Mode, you can select your own favorite music or video files, then press [MODE] key to play them directly;
3. **Delete File:** In “Navigation” mode, hold press [REC] key to open the “Delete” window, then select “Yes” to delete and “No” to exit.

Note: If the selected file format is not supported by this player, it will display a “File Format Error” warning.

λ Chapter 14. DRM-9 Function

- **DRM-9 Transfer Instructions**

Warning : Download music with DRM 9 protection.

1. Music with DRM 9 should be transferred by Windows Media Player 9.0 or 10.0 version to the player.
2. Other download operations will probably cause the player to be unable to read music files with DRM 9.

- **Operation introduction:**

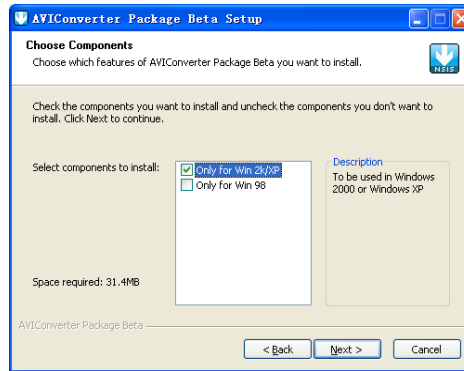
The system may request to download a license if the user has not downloaded the music file with DRM properly from a website. In this case, the user will need to download the license from the music publisher.

1. Connect player to PC.
2. Choose the desired music file with DRM 9.
3. Right click the file and choose “Add to Sync list”.
4. On the open windows, choose “Sync” option.
5. On “Sync” window, choose the desired music file with DRM 9 selected in step 2. and choose “Removable Disk”.
6. Click “start Sync” to transfer the music file with DRM 9 to player.
7. Safely remove the player from PC.

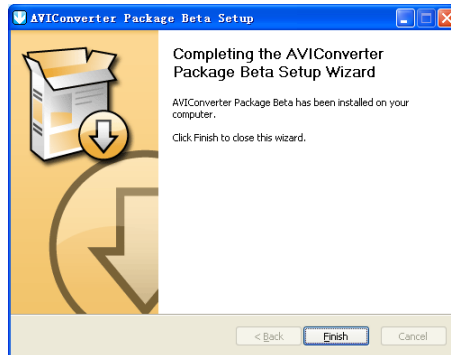
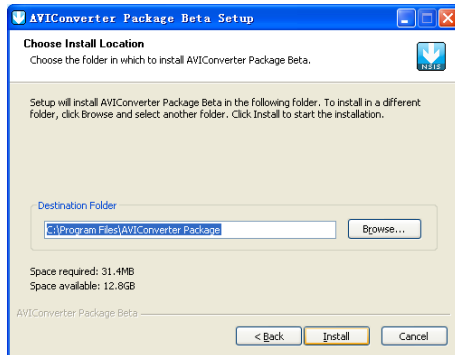
λ Chapter 15. Convert and Play Video File

- **Install the AVI converter**

1. Insert the installation CD into the CD-ROM, select and click “AVIConverter.exe” to setup the program.
2. Then click [Next] button to display as follows:



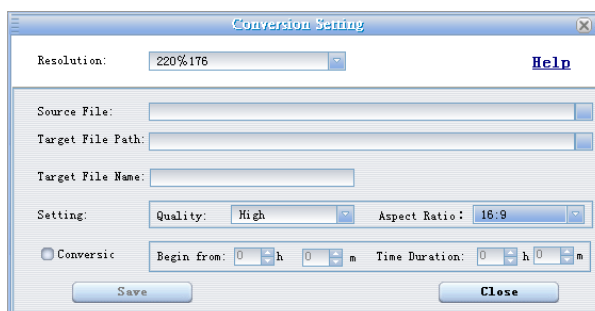
3. Choose "Only for Win 2K/XP" option, then click Next.
4. After selecting the installation routine, click the [Install] button until the installation is completed (shown below)
5. After the installation, click the [Finish] button to finish the software installation (shown below).



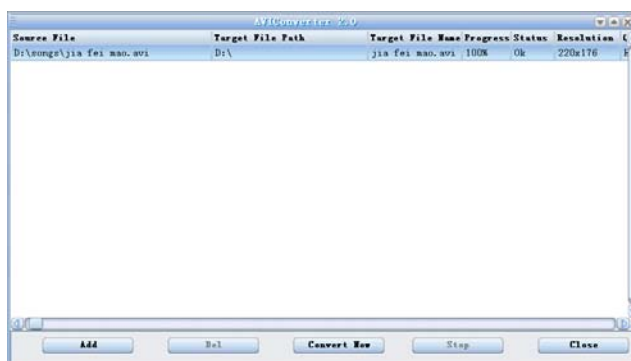
● **Conversion:**

This player can convert RM, VOB, DAT, and RMVB formats into AVI video format via the attached video conversion software.

1. Run the “AVIConverter 2.0” program and click “Add”, then select your desired video/audio file and AVI video file routine to be generated, shown below:



2. Select and set your desired parameters, click “Save”, you can select other files. After selections are finished, click “Close” to shut this window and click “Convert Now”. The player will begin to convert the AVI file.



3. After the conversion has finished, click “Close” to exit.
4. The successfully converted AVI video file can be played in the MP4 player. During the operation, enter Video Mode, select the corresponding file, press [MODE] key to play video, hold down to exit (the Video Play interface refers to the Screen Description).

λ **Chapter 16. Upgrading Player Firmware**

This function is reserved for professional technicians to upgrade the firmware if your MP4 player sustains abnormal damage. Please contact our distributor or our technical support center.

λ **Chapter 17. Troubleshooting**

If you experience a problem, please check the following chart for help.

Problem	Causes
<ul style="list-style-type: none"> ● Power will not turn on 	Power will not turn on if the battery is fully discharged. Recharge the battery and turn the power on again.
<ul style="list-style-type: none"> ● Power automatically turns off 	The power is automatically turned off when the battery is fully discharged. Recharge the battery.
<ul style="list-style-type: none"> ● The screen will not turn on 	<ul style="list-style-type: none"> ● The screen may not be visible under direct sunlight. ● Check if you have selected the “Power Save” setting.
<ul style="list-style-type: none"> ● Playing is disabled 	<ul style="list-style-type: none"> ● Check if the desired file has been saved in the memory. ● Check if the music file is correct or the format is not supported. ● Check if there is enough battery power.
<ul style="list-style-type: none"> ● No music or sound 	<ul style="list-style-type: none"> ● Check if the volume is not reduced to the 0 level. ● Check that the earphones are connected well and keep the earphones clean. ● Corrupted music files may result in unplayability, please confirm the integrity of the files. Re-format the disk.
<ul style="list-style-type: none"> ● Connection to PC is disabled 	<ul style="list-style-type: none"> ● Insert the USB cable well after the power is turned on, or plug in the player again via USB cable. ● Correctly reinstall the driver again.
<ul style="list-style-type: none"> ● Abnormal Play Time Displayed while playing 	Check if that the file is in VBR (Variable Bit Rate) format
<ul style="list-style-type: none"> ● Actual memory capacity is different from what is listed on package 	Small discrepancies are due to different file formats and algorithms used by various operating systems.
<ul style="list-style-type: none"> ● Abnormal wording or file name display 	Make sure that you have selected the correct language.
<ul style="list-style-type: none"> ● The product is hot 	Heat may be generated during recharging. This has no effect on product life or functions.

λ Chapter 18. Service and Support

Please contact our local distributor or our customer service center, if you have any technical problems.

Customer Service Center: <http://www.apacer.com>

λ Chapter 19. Product Specifications

USB interface	USB 2.0
Built-in Memory capacity	2GB/ 4GB
Display	2.2", color TFT 260K display, Diagram (220*176)
User interface	12 languages (ID3 display supported)
Media file playback	MP3/ WMA/WAV/AVI
EQ modes	Normal, 3D,Rock,POP, Classical, D-Bass, Jazz, Custom
S/N ratio	> 85 dB
FM frequency	87.5MHz – 108MHz
Record file supported format	WAV
Picture file supported format	JPEG (PROGRESSIVE not supported)
Video file supported format	AVI RM, VOB,DAT, RMVB (should be converted)
Power source	Video play: >2 hours Music play: >8 hours Voice REC: about 10 hours*
Earphone output	10mw(L)+10mv(R)
Battery life	Maximum of 8 hours music playback time*
Certification	CE, FCC
Dimensions / Weight	(L)70 x (W)47 x (H)14mm / 45g
Operating temperature	-10°C ~ 40°C (14°F ~ 104°F)
Operating humidity	10 % ~ 75%
Support O/S	Windows 98(SE)/ME/2000/XP/Vista
Supported file system	FAT16, FAT32
Accessories	Two Earphones, USB Cable, Quick Start Guide, Carrying Bag, Installation CD (Win98 driver & User Manual inside)

Note: Battery life will vary depending on temperature and usage.

The contents of this Manual are subject to change without prior notice for further improvement.

audio AU840

The copyright on this user manual remains with our company.
No part of this user manual may be transmitted, reproduced
or changed. The product specifications, design and this user
manual's content are subject to change without notice.