



COWON Q5W

Thanks for purchasing COWON.

We always strive for your complete satisfaction of our product.

This manual contains user guide, cautions and other useful information about your COWON player.

Please read this manual thoroughly before using, to take full advantage of features in your COWON player.

Legal Notice

- COWON is a registered trademark of COWON SYSTEMS, INC.
- This product is intended for personal use only and may not be used for any commercial purpose without the written consent of COWON SYSTEMS, INC.
- Information in this document is copyrighted by COWON SYSTEMS, INC. and no part of this manual may be reproduced or distributed without the written permission of COWON SYSTEMS, INC.
- The software described in this document including JetShell and JetAudio are copyrighted by COWON SYSTEMS, INC.
- JetShell and JetAudio may only be used in accordance with the terms of license agreement and cannot be used for any other purposes.
- The media conversion feature in JetShell and JetAudio may only be used for personal use only. Use of this feature for any other purposes may be considered a violation of the international copyright law.
- COWON SYSTEMS, INC. complies with the laws and regulations related to records, videos and games. Complying with all other laws and regulations regarding consumer use of such media is the responsibility of the users.
- Information in this manual including contents of product features and specifications is subject to change without notice as updates may be made.
- This product has been produced under the license of BBE Sound, Inc. (USP4638258, 5510752 and 5736897). BBE and the BBE symbol are the registered trademarks of BBE Sound, Inc.

On-line registration and support

- Users are strongly encouraged to complete customer registration at <http://www.COWON.com>. After filling out our customer registration form using the CD-Key and serial numbers, you can receive various benefits offered only to official members.
- 1:1 online support, news updates for new products or special events, and other services are available for our registered customers.
- Each CD-key is unique and will not be re-issued in case of loss.
- Further information regarding the product can be found on the web: <http://www.COWON.com>
- Users will be able to find the latest information for other COWON products and download the latest updates for firmware and software.
- Frequently Asked Questions and Answers can be found on the website.

DIGITAL PRIDE™

COWON

All rights reserved by COWON SYSTEMS, Inc.

COWON Q5W

1) Before Using this Product	4
1. Precautions for Using this Product	
2. Package Components	
3. Names of Parts	
4. Installation	
5. Recharging	
6. Connecting to PC and storing files	
2) Product Usage	10
1. Key configuration	
2. Controls	
3. Media	
4. Office	
5. Utilities	
6. Network	
7. MS Windows	
3) Product Details	23
1. Product Specifications	
2. Firmware Upgrade	
3. Windows CE upgrade	
4. Factory Default	
5. Coverting Video Files Using COWON MediaCenter - JetAudio	
4) Customer support	27

1. Precautions for Using this Product

COWON is not responsible for any damages or failures to products that are caused by user misuse of products and by not following the set rules/guidelines that are described in this manual.

- Do not use this product for other purposes than those described in this guide.
- Handle manual, product package materials, accessories, etc with care to prevent cuts and injuries to your hands.
- Do not handle/touch LCD screen with a sharp object such as nail, pins, and etc. It may cause permanent damage(s) to the device.
- Do not view videos, pictures and texts stored in your player while driving a vehicle for your safety. Operating other features of the player is also dangerous and may cause fatal accidents while driving.
- If you smell the player burning or find it overheating while in use, stop using the player and contact our A/S Center as soon as possible.
- If you smell the player burning or find it overheating while in use, reset the player and contact our online COWON Technical Support Center as soon as possible.
- Listening at high volumes (85 dB and above) for extended periods may harm your hearing.
- For your protection, use the player in a well lit area where LCD screen will not overly strain your eyes.
- Using the player in places with high occurrences of static electricity may cause malfunctions.
- Keep the player away from magnets and direct magnetic fields, as they can cause malfunctions.
- In case of using this device primarily for a storage device, it is recommended to back up all data before use. COWON SYSTEMS Inc. is not responsible for any data loss due to hardware failure.
- All data stored in the player may be deleted when being serviced. Our Service Center does not backup files while repairing players. Please note that COWON SYSTEMS, Inc. is not responsible for any data loss from products entrusted to us for service.
- Be sure to disconnect the power supply to the PC and AC adapter during lightning or thunderstorms, to prevent danger to the user or the risk of fire hazards.
- Keep the player cool and ventilated place, away from direct sunlight as it may cause deformation, damages to internal circuitry or LCD screens.
- Do not expose the player in either cold weather of under 0 °C or hot temperature places over 50 °C such as inside automobiles. This may cause fatal damage to your player.
- Do not use detergent or other chemicals on the product surface due to fading. In this case, wipe the polluted area carefully with a soft cloth.
- Touching the player with wet hands may cause damage and malfunctions. Handle the power plug only with dry hands (otherwise an electric shock may occur).
- Do not expose your player to water or keep it in a damp or humid place for long periods. If the player is damaged from moisture as described above, product failure is then classified as user misuse.
- Do not attempt to disassemble or reconstruct the player. Any defects resulting from this will void any warranty, and the unit may be permanently disqualified from any warranty service.
- Do not confuse directions when connecting cables to your player or PC. Connecting cables incorrectly may damage your player or PC. Do not bend or press connection cables with heavy objects.
- Only use the AC power adapter and USB cable provided by COWON SYSTEMS, Inc.
- Do not drop or subject the product to any hard impact This may result in malfunctions and/or unit failure and void the warranty.
- Price of the player may fluctuate due to unexpectedly commercial conditions. In this case, COWON SYSTEMS, Inc. has no responsibility to compensate for the price fluctuation.

2. Package Contents

COWON Q5W Standard package



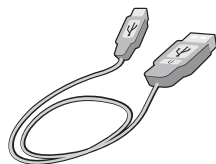
Earphones



AC Adapter



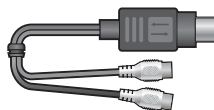
Carrying Case (optional)



USB Cable



AV Cable



S-Video Gender (optional)



Hand Strap



Installation CD,
Quick Guide
(COWON MediaCenter -
JetAudio, User's Manual)

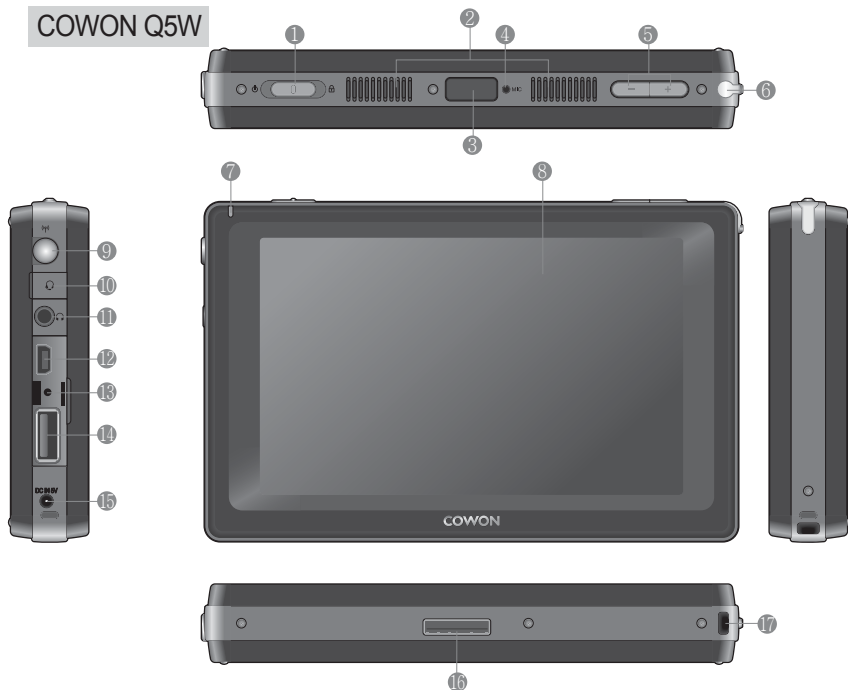


Wireless
Remote

6 Before Using this Product

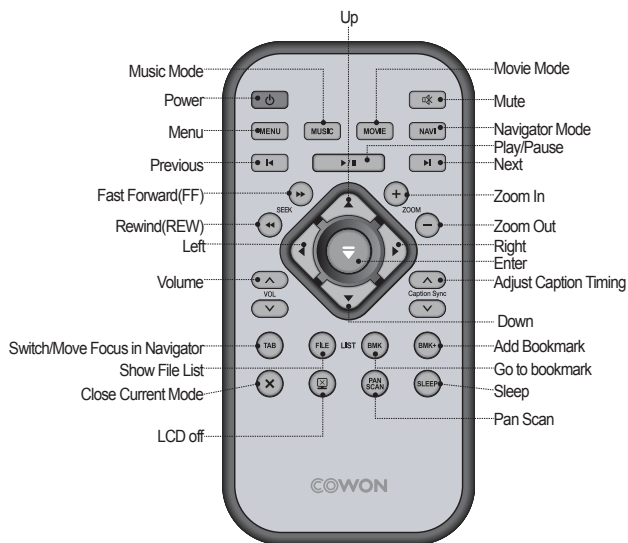
3. Names of Parts

COWON Q5W



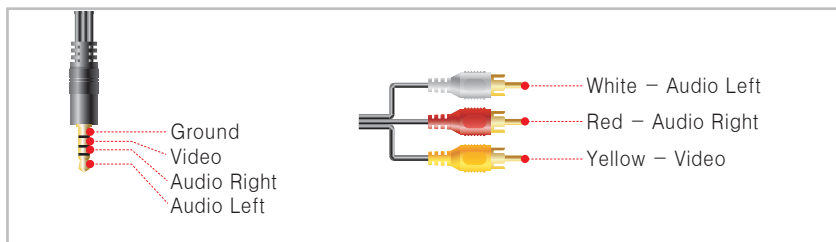
- ① Power/Hold Switch : Turns Unit ON/OFF. Hold will disable all buttons/keys on the Unit. The switch turns LCD ON/OFF, if it is pressed when power is on.
- ② Speaker : Listen to audio without earphones with the built-in stereo speaker.
- ③ Remote Sensor : Receives signals from Remote.
- ④ Microphone : Used for voice recording with the built-in microphone.
- ⑤ Volume Button : Controls volume.
- ⑥ Stylus Storage Hole : Used for storing stylus.
- ⑦ LED : Indicates player status.
- ⑧ TFT LCD : Displays information and playback screens.
- ⑨ WLAN Antenna : Internal Antenna for WLAN reception.
- ⑩ Headset Jack : 2.5mm Headphones plug. Headphone with microphone can be used for recording.
- ⑪ Earphone Jack : Connect the bundled earphones or any earphones with a standard 3.5 mm plug.
- ⑫ USB Port : Connecting to PC via USB 2.0 cable for file transfer.
- ⑬ RESET Hole : Press into the reset hole to cut off battery when the player is malfunctioning.
- ⑭ USB HOST Port : Connect USB host compatible devices via USB Host cable.
- ⑮ DC Adapter Jack : Connect the adapter to charge Q5W.
- ⑯ I/O port: Used for AV OUT.
- ⑰ Strap Holder : Used for various straps and accessories.

Remote

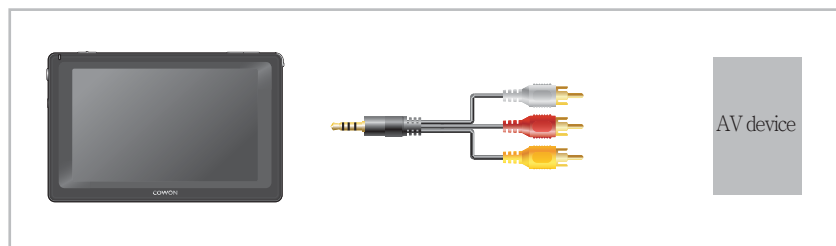


8 Before Using this Product

AV Cable



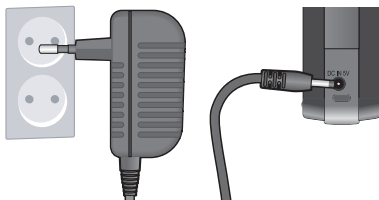
- COWON Q5W supports Composite/Component Video out and stereo / SPDIF Audio out.



- Use AV cable to connect I/O port on Q5W and AV In(Composite/Component) port of an external AV device.
- Utility -> Settings -> TV setting -> Video OUT

5. Recharging

Use included AC adapter to charge COWON Q5W.

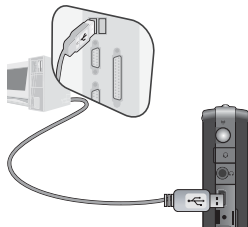


- Connect AC adapter to Q5W(DC IN port) : approx. 5.5 hrs for a full charge.
- Charging indicator LED:
RED -> Still charging YELLOW -> Fully charged

- Q5W cannot be charged while it is in use by default. If you want to charge during operation, change the power settings. (Utility -> Settings -> Power Management -> Charge during Operation)
- Q5W may heat up after being used for the extended time. It dissipates internal heat through the aluminum casing, therefore the unit may feel warm.
- Make sure to fully charge the unit before its initial use or the first use after a long period of non-use.
- For your safety, genuine AC adapter from COWON is recommended.
- Genuine AC adapter supports both 100/240V.
- Q5W does not support charging through USB cable. AC adapter must be used for charging.

6. Connecting to PC and storing files

COWON Q5W supports Mass Storage mode, Active sync mode, and MTP Mode. Recommended mode for storing files is Mass Storage mode (Q5W is attached as removable drive).



1. Select Utility -> Settings -> System -> USB Connection and choose 'Mass Storage Mode'

2. Connect Q5W to a PC via USB cable included.

3. If connection made successfully, the following picture will be displayed on the LCD.

4. Q5W will appear as a removable drive in Explorer of the Windows.

5. Launch COWON MediaCenter or Windows Explorer.

6. Copy media files such as music file, picture file, encoded video file, and etc from PC to COWON Q5W.

7. After all files are saved, click the  icon from the PC tray.

8. Click the following popup message when it appears.



9. When the Safe To Remove Hardware window appears, separate the USB cable..



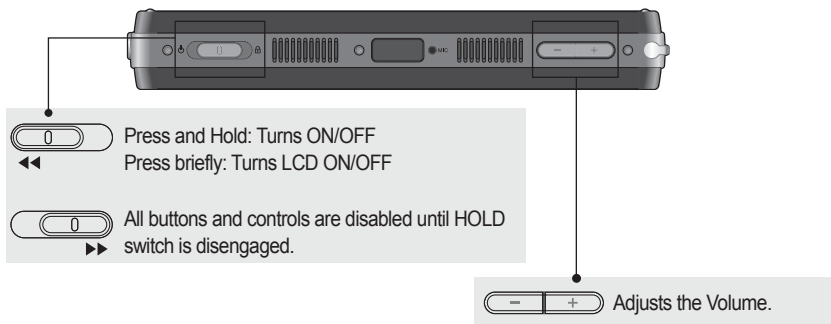
- Check connection settings and cables, and make sure Q5W is properly connected and is recognized by PC.
- If the following message appears, run Safe To Remove Hardware after a few minutes. This is not a malfunction.



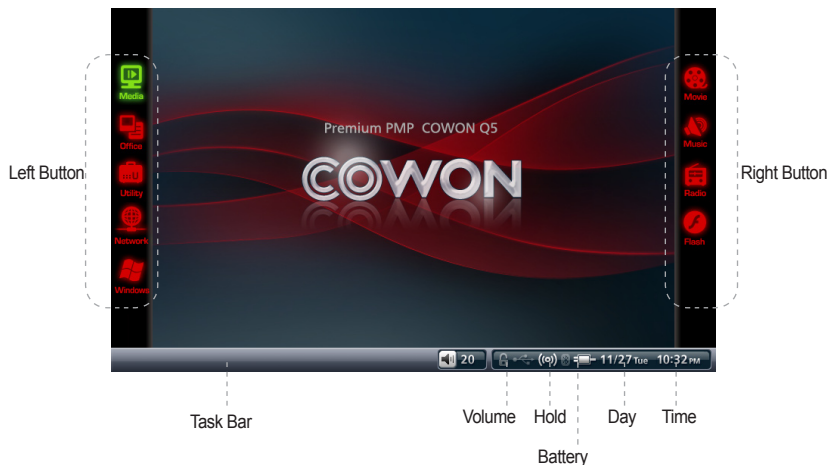
- PC environment

- * Pentium III 200Mhz or Higher
- * 32MB Main Memory or More
- * 50MB Hard Disk Space or More
- * 256 or Higher color display
- * USB Port (2.0 High Speed)
- * DVD-ROM Drive
- * Windows ME/2000/XP
- * MAC OS 10.X (Only date transfer supported)
- * Linux kernel v2.4 or higher (Only date transfer supported)

1. Buttons/Keys



2. Controls



Q5W's Touch screen LCD makes controls intuitive and simple.

In the Main screen, pressing button on the left side of the screen will display available modes on the right side. Choose a mode on the right side by clicking or touching mode icon, then the selected mode will be activated.

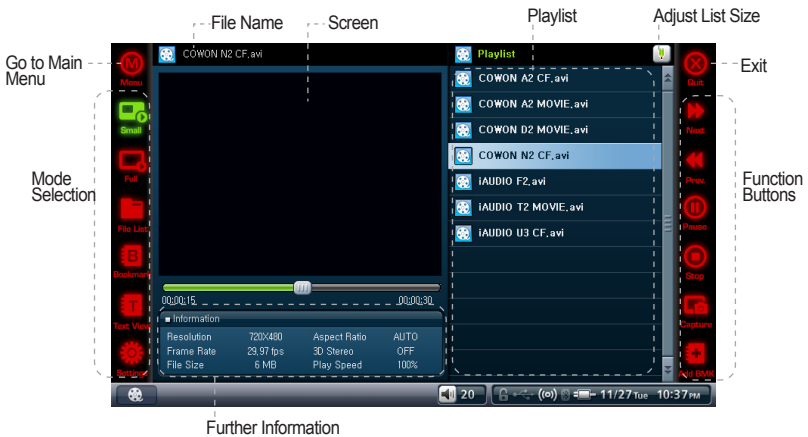
After launching a mode, press the left button, then navigate/control with the button on the right side.

To close current mode, press "Menu" button on left side or "Quit" button on right side.

3. Media

Movie, Music, Radio, Flash modes are available in Media.

Movie



Small

- Switch to default size to reveal video controls (Video capture, bookmark, and etc)



Full

- Switch to fullscreen mode.



File List

- Browses files stored in COWON Q5W in tree style.
- Open folder, Move through file hierarchy, select/delete text files. Multiple file selection is not supported, use Office-Browser mode for the feature.



Bookmark

- Playback/Delete Bookmark(s)
- If selected, it plays back from the location where bookmark is set.



Text View

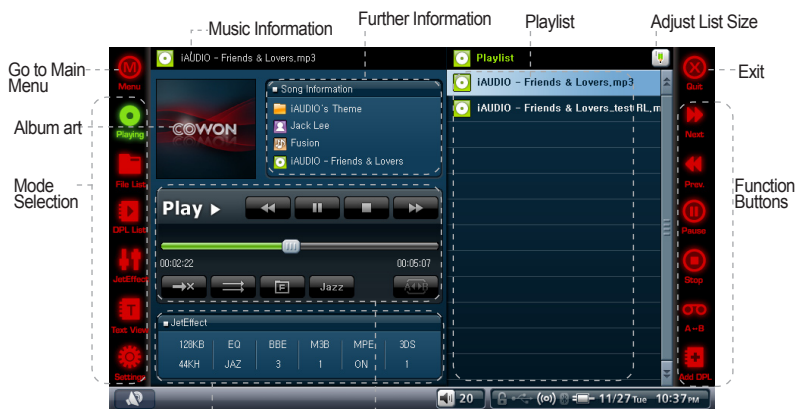
- View text files while watching video.



Settings

- Set video playback options : aspect ratio, play speed, subtitle size and etc.

Music



Playing

- Plays audio files, Section repeat, and adding to DPL (dynamic playlist) features are available.



File List

- Browses files stored in COWON Q5W in tree style.
- Open folder, Move through file hierarchy, select/delete text files. Multiple file selection is not supported, use Office-Browser mode for the feature.



DPL List

- Playing/Adding/Deleting DPL list created/added in 'File List'



JetEffect

- World-renowned sound enhancement that clears music with BBE, emphasizes the bass with Mach3Bass, restores distorted sound with MP Enhance, gives full 3D experience with 3D Surround, and more.
- Adjusting values of JetEffect may increase the noise level during playback. For further details on JetEffect, please refer to the BBE MP manual from our webpage (<http://www.COWON.com>).



Text View

- View text files even while playing audio files.



Settings

- Set audio playback options: Play speed, Repeat, Random, Boundary, and Seek Speed.

Radio



Preset On

- Enables preset feature while listening to FM radio.
- Adding a new channel to channel list can be done with 'scan channel' and 'add channel' in 'Preset Off' mode.



Preset Off

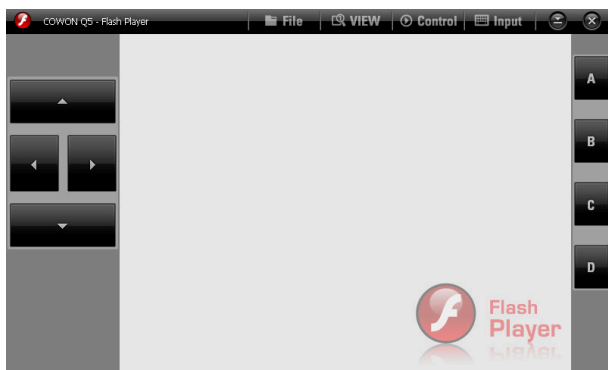
- Disables presets, and enables manual tune-in.
- Channel can be scanned and added to channel list while listening. Channel list can be selected in 'Preset ON' mode.



Settings

- Set channel preset, region, sound, and output methods.

– Make sure earphones are attached. Q5W does not have built-in antenna, it uses earphones as an external antenna.

Flash

- Run Flash files(swf extension) stored in COWON Q5W.
- Play simple flash games and flash animation in this mode.

4. Office

Photo, Text, Browser modes are available in Office.

Photo



Photo

- Displays image files. Zoom In/Zoom Out/Rotation features are available.



SlideShow

- Slideshows image files stored in the same folder.



Cartoon

- Shows Comic book images shown as full screen



Thumbnail

- Shows simple Thumbnail images.



File List

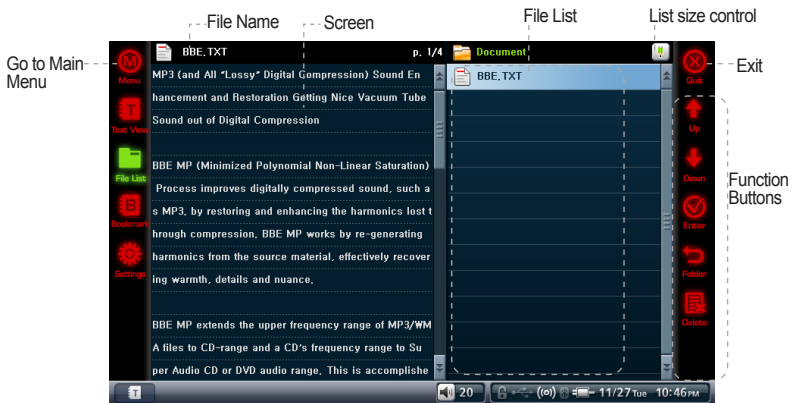
- Browses files stored in COWON Q5W in file tree style.
- Open folder, Move through file hierarchy, select/delete text files. Multiple file selection is not supported, use Office-Browser mode for the feature.



Settings

- Available settings: SlideShow Delay, Auto Rotate, Fill Screen, Split Image, Show Exif, Optimize Decoding, and Auto Rotate(Exif)

Text



Text View

- Views text files. Auto-scroll, and bookmark features are available.



File List

- Browse files stored in COWON Q5W in tree style.
- Open folder, Move through file hierarchy, select/delete text files. Multiple file selection is not supported, use Office-Browser mode for the feature.



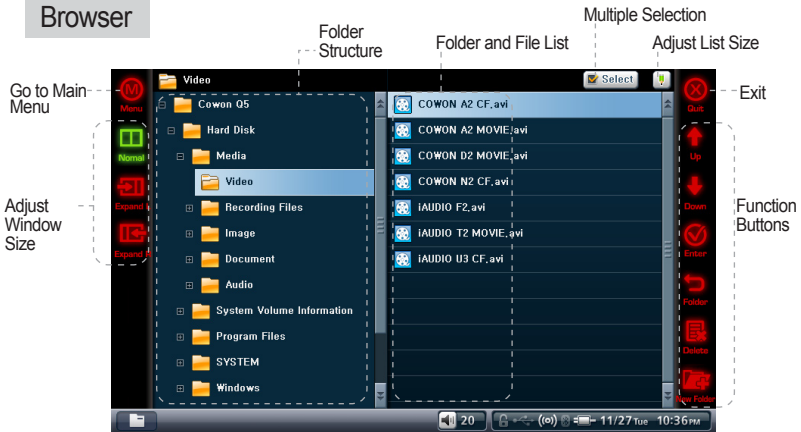
Bookmark

- Deletes/Adds Bookmark(s)
- If selected, it opens the bookmarked page



Settings

- Set Text viewer environment: Auto Scroll, LCD Brightness, Font size/color



- Browse files stored in COWON Q5W in tree style.
- When USB Host 'enabled' (Settings -> system -> USB Host), connected USB device can be viewed under Browser mode.

5. Utility

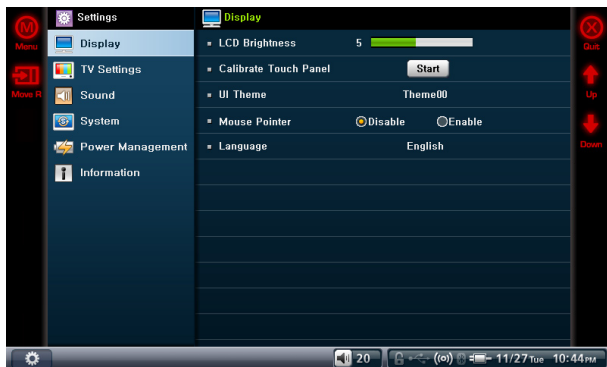
Record, Settings, Bluetooth modes are available in Utility.

Record



- Recording via built-in microphone or external headsets
- Music mode is recommended to playback recorded files due to simplicity of the music player in the record mode.

Settings



Display

LCD Brightness

- Adjust brightness of the LCD.

Calibrate Touch Panel

- Recalibrates touch grid on the touchscreen.

UI Theme

- Selects pre-loaded system UI theme

Mouse Pointer

- Enables/Disables Mouse pointer feature.

If WINCE compatible mouse used, enable this feature.

Menu Language

- Selects system language for COWON Q5W.

TV Settings

TV Out

- Selects TV Out standard (for e.g. select 'NTSC' for korea)

TV Brightness

- Adjust TV Out brightness level

TV Contrast

- Adjusts TV OUT contrast level.

TV Saturation

- Adjusts TV Out Color quality.

Video Out

- Selects Video Out mode (s-Video/Composite , RGB Component)

Sound

Beep Sound

- Enables/Disables Beep sound.

SPDIF Out

- Enables/Disables SPDIF Out.

Bluetooth Settings

- Set Bluetooth sound quality.

Mute When Bluetooth Connected

- On/Off speakers when Bluetooth connected.

 **System****USB Connection**

- Selects USB connection mode
- To transfer files, 'Mass Storage' must be selected.
- 'Mass Storage' mode is default, and it will be restored after system restore/reboot.

Date

- Sets Date

Time

- Adjusts Time

Alarm Settings

- Set Alarm clock. Alarm goes off at specified time, and Q5W automatically turns itself on.

Alarm Options

- Adjust volume and set program for alarm clock.

Sleep

- Sets auto-off time.
- COWON Q5W automatically shuts itself off after specified time.

USB Host

- Enables/Disables USB Host feature
- If set to 'Disable', compatible USB device won't be recognized when connected to COWON Q5W.
- USB Host will be automatically disabled after system restart/reboot.

Startup program

- Set system startup programs.

Hold settings

- Enable/Disable key operations when 'HOLD' switch is on.

WLAN Settings

- Turns WLAN On/Off
- Enabling WLAN feature consumes more energy, hence it may reduce battery performance significantly.

 **Power management****Auto LCD Off**

- Set LCD auto-off time.
- LCD screen automatically turns off, if Q5W does not detect any operations for specified LCD auto-off time.

Auto Power Off

- Automatically powers off after no operation detected for specified time.
- The feature is disabled automatically, if unit's in use.

HDD Power Management

- Enable/Disable HDD power savings mode.
- If set to 'Enabled', playback time would be extended, but system response may slow down.

Charge During operation

- Enable/Disable Charging via AC adapter while in use.
- If set to 'Disabled', AC adapter will only be used as an external power source, and will not charge COWON Q5W.

i Information

- Boot loader version: Displays current booting loader version installed
- Firmware version: Displays current firmware version installed
- Application Version (program version) : Displays current program version installed
- Hard Disk Total Capacity: Displays total HDD capacity
- Hard Disk Remaining Capacity: Displays remaining storage space in HDD

Bluetooth

Built-In Bluetooth Pan Settings and connecting to Bluetooth device(s)

Alternative way to access Bluetooth mode:

Control Panel (under WinCE) -> Bluetooth Device Properties

Search

- Detecting active Bluetooth device(s) near COWON Q5W. Bluetooth option (under 'Bluetooth Device' settings) must be turned on.

Pairing

- Perform 'Pairing' with Bluetooth device found from search
- Use the same passcode for COWON Q5W and Bluetooth device during 'Pairing' in order to establish Bluetooth connection.

Connect

- Establish connection between COWON Q5W and Bluetooth Device. 'Pairing' must be done in the initial connection.

Disconnect

- Disconnect selected Bluetooth device connection.

Delete, Delete All

- Delete Bluetooth Device list from the search

When settings window closed, Bluetooth connection remains active after connection is made properly.

6. Network



WLAN Mode

- Use this to connect to the integrated WLAN(Wireless Lan) adaptor in COWON Q5W.
- By default, WLAN mode is disabled. So select Settings > System > WLAN or tap the WLAN icon on the bottom right corner of the screen to enable WLAN mode. If you want to access the Internet in the WLAN mode, you must install a home wire/ wireless router or subscribe to wireless Internet service.
- To use the WLAN, you must enter the SSID of the wireless AP and may need the network key, depending on the network setting. For more information, see the user guide for the applicable wireless AP.
The wireless AP (Access Point) is an integrated network router for providing both wire and wireless network connections and use the SSID to identify each device in the network. Generally, the home wire/wireless router belongs to the wireless AP.

Connecting WLAN

1. Select Settings > System > WLAN or tap the WLAN icon on the bottom right corner of the screen.
2. Tap the WLAN mode to activate it.
3. The ambient wireless APs available will be listed. Double-click one of them to move to the Wireless Network Properties dialog box.
4. In the Wireless Network Properties dialog, specify the SSIP of the wireless AP and the network key and press OK on the bottom.
5. If you have set the Wireless Network Properties properly, tap Connect on the bottom left side to connect to the wireless AP.
6. When the wireless AP is successfully connected, press OK on the top right corner and launch MSN or Explorer to connect to the Internet.

If you failed to connect to the wireless AP, reset the wireless network key and try again. For more information, see the user guide for the applicable wireless AP.

7. Windows

- WINCE applications can be launched within the Windows mode. It deactivates Q5W main menu when this mode activates.
- To return to Q5W main menu, run 'COWON Launcher' icon on the desktop.

1. Product specifications

COWON Q5W- Product specs		
LCD	5 inch 16.7 million Color TFT LCD – WVGA (800x480)	
	Cont. Ratio	500:1
	Brightness	200cd/m2
	Other	Touch screen
H / W	CPU	Alchemy AU1250
	Memory	64MB NOR FLASH, 128MB DDR2 SDRAM
	WLAN	IEEE 802.11g/b
	Bluetooth	Bluetooth Ver 2.0 +EDR / A2DP, AVRCP profile
S / W	OS	WinCE 5.0 Professional
	Multimedia	Music/Video playback
	Addn' l. features	Flash player, voice recorder, picture/text viewer, FM radio
HDD	1.8 inch, 40GB / 60GB, FAT32 File system	
USB Interface	USB Device / Host : USB 2.0 High Speed	
Transfer rate	Max Write : 76Mbps, Read : 64Mbps	
Battery type	Built-In rechargeable Lithium-Polymer	
Battery Life	Audio : up to 13 hours continuous Video : up to 7 hours continuous	
Charging time	Approx. 5.5 hours via AC Adapter	
Buttons	VOL-, VOL+, POWER/HOLD Switch	
SNR	95dB (A-Weighted)	
Freq. Range	20Hz~20KHz	
Power Output	16 Ohm Earbuds : 34mW + 34mW	
	Built-IN : 1W + 1W	
Dimensions	138.8 X 88.5 X 20.0 mm (WxHxD)	
Weight	380g (including battery)	

COWON Q5W - Multimedia		
Music	File formats	MP3, WMA, ASF, OGG, WAV, FLAC, APE, MPC
	Audio Codec	MPEG 1/2/2.5 Layer 3, WMA, Ogg Vorbis, Wave, FLAC, APE, MusePack
	Audio Res.	8Kbps ~ 1.4Mbps
	Sound enhancements	JetEffect (5 band EQ, BBE, Mach3Bass, MP3 Enhance, 3D Surround)
Movie	File formats	AVI, ASF, WMV, MPG, OGM
	Video Codec	DivX, XviD, MPEG4, WMV 7/8/9
	Video Res.	Max 720x480, 30fps
	Audio Codec	MP3, WMA, AC3, OGG
	Audio Res.	Max 48KHz, 320 Kbps
	Sound field	3D Stereo
	Subtitles	SMI, SRT
TV-Out	COMPONENT, S-VIDEO, COMPOSITE	

Recording	File formats	ADPCM 8~48 KHz recording and playback
	Microphone	Built-In, External (optional)
Picture	Files formats	JPG, BMP, PNG, RAW
	Max Res.	Max 2560x1920
Text	Files formats	TXT file Viewer
	Max Size	Max 7MB
FM channels	FM RADIO : 76MHz ~ 108MHz, 87.5MHz ~ 108MHz	

– Battery performance test was conducted under optimal condition by manufacturer; therefore actual performance may differ.

2. Firmware Upgrade Guide

Firmware is embedded software within hardware, and upgrading it further enhances system stability and feature sets.

Unnoticed changes in unit features and performance may occur after firmware upgrade. Be advised that Beta (non-official version) firmware may cause system malfunctions.

To check current firmware version:

Settings -> Information

Back up all data before firmware upgrade.

Firmware upgrade procedure may differ by versions. Visit our website(www.COWON.com) for further assistance.

3. WINCE Upgrade

WINCE upgrade pack is available for additional cost. The upgrade pack includes office viewer feature and upgrades OS to WINCE Professional Plus.

Refer to WINCE upgrade package manual for upgrade instruction.

Additionally, some office file may not be viewed after upgrade using WINCE Professional Plus, and viewing experience on Q5W may differ from viewing from PC.

4. Factory Defaults

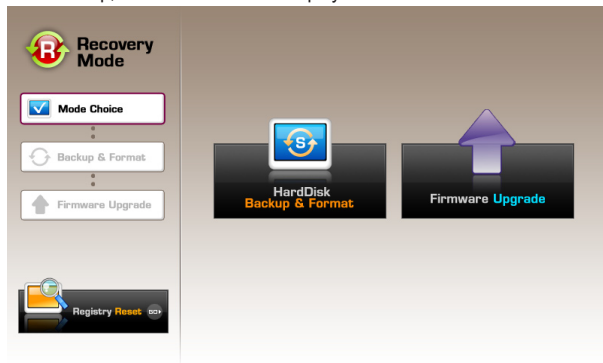
Default settings and Factory default options are available in COWON Q5W. User settings will be lost and Factory default settings will be restored.

How to

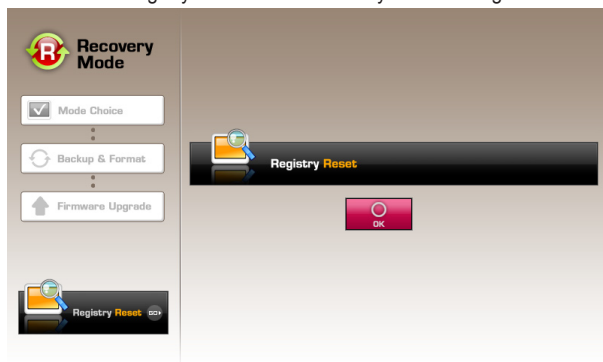
1. Press and hold volume up '+' button and power the unit ON.



2. After boot up, restore mode will be displayed.



3. Press 'Initialize registry' button to restore factory default settings.



- In case of system failure, press 'RESET' to reboot the system. If failure continues, restore factory default by following the above steps.

5. Converting Video Files Using COWON MediaCenter - JetAudio

1. Install and then run COWON MediaCenter - JetAudio.



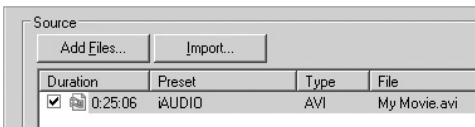
2. Click "Convert Video" on the top to convert the video file.



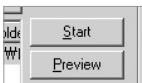
3. From the Convert Video window, click "Add File" to select the files to convert.



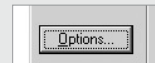
4. Check the selected video files in the list.



5. After checking the target folder location to save the converted files and other settings, click on "Start" to start the video conversion process.



- Movie files that have not been converted by COWON MediaCenter - JetAudio will not play in iAUDIO.
- Make sure that the movie files play properly on the PC.
- Not all files are convertible. Files initially damaged before conversion may not be viewed on device even though conversion was successful.
- Conversion time may vary depending on PC performance, source file size and codec types.
- "Preview" allows checking the converted video before starting conversion.
- To convert a file with subtitles or to change settings on subtitles, click on "Convert Options" .



- SMI files for subtitles must have the same file name as its video file.

Didn't find solution from the manual

Please refer to our homepage (www.COWON.com), and visit customer support, product FAQ, or beginner's guide for further assistance.

Unit won't power up.

Plug AC adapter and charge Q5 when the battery is completely depleted. Q5W may take longer to recharge after complete depletion. In such case, the unit might take longer time to power on even after plugging AC adapter to charge.

Button does not work.

Make sure 'HOLD' switch is disabled.

Wireless remote does not work

Check battery in the remote. Remove any objects may block communication between remote and remote sensor on Q5W.

Can't hear anything

Check to see if volume is set to '0'.

Make sure compatible media file is stored in Q5W. Also, damaged audio file may generate noise or distorted sound during playback.

Make sure headphones are connected properly. Wipe headphone plug with soft cloth may help reducing noise during playback.

Music mode won't display album art

To display album art, image file must be stored in ID3 Tag of the audio file.

Use COWON Mediacenter-JetAudio to edit ID3 Tag.

Can't play video files

Loading time may vary depends on codec and types of video file.

Use COWON MediaCenter to convert video files to Q5W compatible files, otherwise video may not be played on Q5W.

TV OUT puts noisy picture/does not work

Make sure Q5W TV out setting is correct. Utility -> Settings -> TV -> TV OUT/Video OUT

Can't Tune into FM channels

FM signal strength may vary by locations. Make sure earphones are attached. Q5W does not have built-in antenna, it uses earphones as an external antenna.

Can't open office files.

COWON Q5W does not include office viewer. In order to view office files, WINCE must be upgraded using WINCE upgrade pack. Please refer to the WINCE upgrade guide from the Microsoft.

Noisy recordings

Noise from the HDD may be picked up by built-in microphone during recordings. Also, due to limitation of digital devices, recorded audio may not sound normalized.

Can't read decoded foreign languages

COWON Q5W is built on the English version of Windows OS, therefore some special foreign characters/symbols/fonts might not be displayed correctly.

PC does not recognize Q5W.

Make sure Q5W is set to 'Mass Storage Device' (Utility→Settings→System→USB)

When Active Sync Mode is enabled, Q5W won't be recognized as a Mass Storage Device from the windows OS.

Press 'RESET' button, when Q5W does not turn on after connecting to PC.

If connecting is unstable (disconnecting frequently), use USB port in the back of PC.

USB Host won't recognize my USB device

Not all USB devices are compatible with the Q5W USB Host. Please visit our website and check the compatible USB device list.

Available disk space indicated is less than actual disk space.

Available disk space indicated is less than Actual disk space.

Available disk space indicated may less than actual disk space. This is because the space recognized by both the hard disk manufacturer and your computer is different, and the space used for system files for normal player operation has influence in the actual disk space.

Disk is full, and system does not work.

Disk is full, and system does not work.

At least 5MB of free space is required for settings files and system reserves.

Additional page

User's Manual Information

Do not

Any changes or modifications to the equipment not expressly approved by the party responsible for compliance could void user's authority to operate the equipment.

FCC Compliance Statement

This device complies with part 15 of the FCC Rules. Operation is subject to the following two conditions:

- (1) This device may not cause harmful interference, and
- (2) This device must accept any interference received, including interference that may cause undesired operation

Information to User

This equipment has been tested and found to comply with the limits for a Class B digital device, Pursuant to part 15 of the FCC Rules. These limits are designed to provide reasonable protection against harmful interference in a residential installation. This equipment generates, uses and can radiate radio Frequency energy and, if not installed and used in accordance with the instructions, may cause harmful interference to radio communications.

However, there is no guarantee that interference will not occur in a particular installation. If this equipment does cause harmful interference to radio or television reception, which can be determined by turning the equipment off and on, the user is encouraged to try to correct the interference by one or more of the following measures:

- Reorient or relocate the receiving antenna.
- Increase the separation between the equipment and receiver
- Connect the equipment into an outlet on a circuit different from that to which the receiver is connected.
- Consult the dealer or an experienced radio/TV technician for help.

DIGITAL PRIDE.

©WON