



SA5225

SA5245

SA5247

SA5285

SA5287

SA5295

Congratulations on your purchase
and welcome to Philips!
To fully benefit from the support that
Philips offers, register your product at
www.philips.com/welcome

Digital audio video player

Need help?

Please visit

www.philips.com/welcome

where you can access a full set of supporting materials such as user manual, the latest software updates and answers to frequently asked questions.

Contents

1	Important safety information	3
2	Your new player	8
2.1	What's in the box	8
2.2	Register your product	8
3	Getting started	9
3.1	Overview of controls and connections	9
3.2	Main menu	10
3.3	Install	10
3.4	Connect and charge	11
3.4.1	Use the supplied USB cable	11
3.4.2	Battery level indication	11
3.5	Transfer music and pictures	12
3.6	Transfer videos	12
3.7	Enjoy	13
3.7.1	Turn on and off	13
3.7.2	Navigate the menu	13
3.7.3	Lock slider	13
4	Organize and transfer music and pictures with Windows Media Player 11	14
4.1	Installing Windows Media Player 11 (WMP11)	14
4.2	Music and picture transfer	14
4.2.1	Add music and picture files to WMP11 library	14
4.2.2	Add music and picture files that are stored elsewhere on your computer or computer network	14
4.2.3	Switch between music and pictures library in Windows Media Player and your player	15
4.2.4	Rip songs from a CD	16
4.2.5	Buy music online	18
4.3	Sync your Windows Media contents to your player	18
4.3.1	Set up your player	19
4.3.2	Switch between automatic and manual sync	19
4.3.3	Select and prioritize what syncs automatically	19
4.3.4	Select files and playlists for manual sync	21
4.3.5	Copy files from your player to your computer	23
4.4	Manage your Windows Media Player Playlist	23
4.4.1	Create a regular Playlist	23
4.4.2	Create an Auto Playlist	24
4.4.3	Edit playlist	25
4.4.4	Transfer playlists to your player	26

Contents

4.5	Manage your files and playlists in Windows Media Player	11 26
4.5.1	Search for music or pictures via WMP11	26
4.5.2	Delete files and playlists from WMP11 library	26
4.5.3	Delete files and playlists from your player	27
4.5.4	Edit song information via WMP11	28
4.5.5	Format your player via WMP11	29
5	Detailed operation	30
5.1	Music mode	30
5.1.1	Control	30
5.1.2	Find your music	31
5.1.3	Limit the volume	32
5.1.4	Resume play (Now playing)	32
5.2	Picture library	33
5.2.1	View pictures	33
5.2.2	Adding pictures to folder 'Favorites'	33
5.2.3	Slideshow	33
5.3	Video	34
5.3.1	Transfer videos from a computer to the player	34
5.3.2	Video play	34
5.3.3	Fast forward / backward control	34
5.4	Radio	35
5.4.1	Automatic tuning of radio stations	35
5.4.2	RDS (Radio Data System)	35
5.4.3	Play a preset radio station	35
5.4.4	Manually tune a radio station	35
5.4.5	Manually save a radio station to a preset	36
5.4.6	Record from FM radio1 when the radio is playing	36
5.5	Recordings	37
5.5.1	Play recordings	37
5.5.2	Upload recordings to the computer	37
5.5.3	Delete recordings	38
5.6	Use your player to store and carry data files	38
6	Settings	39
6.1	Equalizer custom settings	40
7	Update your player	41
7.1	Perform a software update	41
8	Technical data	42
9	Frequently asked questions	44

1 Important safety information

General maintenance

To avoid damage or malfunction:

- Do not expose the player to excessive heat caused by heating equipment or direct sunlight.
- Do not drop your player or allow objects to fall on your player.
- Do not allow your player to be submerged in water. Do not expose headphone socket or battery compartment to water, as water entering the set may cause major damage.
- Do not use any cleaning agents containing alcohol, ammonia, benzene, or abrasives as these may harm the set.
- Active mobile phones in the vicinity may cause interference.
- Back up your files. Please ensure that you retain the original files you have downloaded to your device. Philips is not responsible for any loss of data if the product becomes damaged or not readable / legible.
- Manage (transfer, delete, etc.) your music files only with the supplied music software to avoid problems!

About operating and storage temperatures


- Operate in a place where temperature is always between 0 and 35°C (32 to 95°F)
- Store in a place where temperature is always between -20 and 45°C (-4 to 113°F)
- Battery life may be shortened in low temperature conditions.

Replacement parts/accessories

Visit www.philips.com/support to order replacement parts/accessories.

Hearing Safety

Listen at a moderate volume.

- Using headphones at a high volume can impair your hearing. This product can produce sounds in decibel ranges that may cause hearing loss for a normal person, even for exposure less than a minute. The higher decibel ranges are offered for those that may have already experienced some hearing loss. 
- Sound can be deceiving. Over time your hearing “comfort level” adapts to higher volumes of sound. So after prolonged listening, what sounds “normal” can actually be loud and harmful to your hearing. To guard against this, set your volume to a safe level before your hearing adapts and leave it there.

To establish a safe volume level:

- Set your volume control at a low setting.
- Slowly increase the sound until you can hear it comfortably and clearly, without distortion.

Listen for reasonable periods of time:

- Prolonged exposure to sound, even at normally “safe” levels, can also cause hearing loss.
- Be sure to use your equipment reasonably and take appropriate breaks.

Be sure to observe the following guidelines when using your headphones.

- Listen at reasonable volumes for reasonable periods of time.
- Be careful not to adjust the volume as your hearing adapts.
- Do not turn up the volume so high that you can't hear what's around you.
- You should use caution or temporarily discontinue use in potentially hazardous situations.
- Do not use headphones while operating a motorized vehicle, cycling, skateboarding, etc.; it may create a traffic hazard and is illegal in many areas.

Important (for models supplied with headphones):

Philips guarantees compliance with the maximum sound power of its audio players as determined by relevant regulatory bodies only with the original model of provided headphones. In case this one needs replacement, we recommend that you contact your retailer to order a model identical to that of the original, provided by Philips.

Copyright information

All other brands and product names are trademarks of their respective companies or organizations.

Unauthorized duplication of any recordings whether downloaded from the Internet or made from audio CDs is a violation of copyright laws and international treaties.

The making of unauthorized copies of copy-protected material, including computer programmes, files, broadcasts and sound recordings, may be an infringement of copyrights and constitute a criminal offence. This equipment should not be used for such purposes.

This product is protected by certain intellectual property rights of Microsoft Corporation. Use or distribution of such technology outside of this product is prohibited without a license from Microsoft or an authorized Microsoft subsidiary.

Content providers are using the digital rights management technology for Windows Media contained in this device ("WM-DRM") to protect the integrity of their content ("Secure Content") so that their intellectual property, including copyright, in such content is not misappropriated. This device uses WM-DRM software to play Secure Content ("WM-DRM Software"). If the security of the WM-DRM Software in this device has been compromised, Microsoft may revoke (either on its own or upon the request of the owners of Secure Content ("Secure Content Owners")) the WM-DRM Software's right to acquire new licenses to copy, display and/or play Secure Content. Revocation may also prevent your device's ability to transfer, store, copy, display and/or play Secure Content which you have previously stored on your Device. Revocation does not alter the WM-DRM Software's ability to play unprotected content. A list of revoked WM-DRM Software is sent to your device whenever you download a license for Secure Content from the Internet or from a PC. Microsoft may, in conjunction with such license, also download revocation lists onto your device on behalf of Secure Content Owners, which may disable your device's ability to copy, display and/or play Secure Content.

In the event of revocation, Philips will attempt to make available software updates to restore some or all of your device's ability to transfer, store, access, copy, display and/or play Secure Content. However, the ability to make such updates available does not rest solely with Philips. Philips does not guarantee that, after revocation, such software updates will be available. If such updates are not available, your device will not have the ability to transfer, store, copy, display and/or play Secure Content - even Secure Content which you have previously stored on your device.

In addition, even if such software updates are available, they may not enable your Device to transfer, store, copy, display, and/or play Secure Content which was previously stored on your Device. In some cases you may be able to transfer the content from the PC. In other cases, you may have to repurchase previously obtained Secure Content.

To summarize - Microsoft, Secure Content Owners, and Secure Content distributors may deny you access, or restrict your access, to Secure Content. They may also disable your device's ability to transfer, store, copy, display and/or play Secure Content even after you have paid for and obtained it. Neither your consent nor the consent or approval of Philips is necessary for any of them to deny, withhold or otherwise restrict your access to Secure Content or to disable your device's ability to transfer, store, access, copy, display, and/or play Secure Content. Philips does not guaranty that you will be able to transfer, store, access, copy, display, and/or play Secure Content.

The Windows Media and the Windows logo are registered trademarks of Microsoft Corporation in the United States and/or other countries.

Be Responsible! Respect Copyrights.



Philips respects the intellectual property of others, and we ask our users to do the same.

Multimedia content on the internet may have been created and/or distributed without the original copyright owner's authorization.

Copying or distributing unauthorized content may violate copyright laws in various countries including yours.

Compliance with copyright laws remains your responsibility.

The recording and transfer to the portable player of video streams downloaded to your computer is intended only for use with public domain or properly licensed content. You may only use such content for your private, non-commercial use and shall respect eventual copyright instructions provided by the copyright owner of the work. Such instruction may state that no further copies shall be made. Video streams may include copy protection technology that prohibits further copying. For such situations the recording function will not work and you will be notified with a message.

Data logging

Philips is committed to improving the quality of your product and enhancing the Philips user experience. To understand the usage profile of this device, this device logs some info / data to the non-volatile memory region of the device. These data are used to identify and detect any failures or problems you as a user may experience while using the device. The data stored, for example, will be the duration of playback in music mode, duration of playback in turner mode, how many times battery low was encountered, etc. The data stored do not reveal the content or media used on the device or the source of downloads. The data stored on the device are retrieved and used **ONLY** if the user returns the device to the Philips service centre and **ONLY** to simplify error detection and prevention. The data stored shall be made available to user on user's first request.

Disposal of your old product



Your product is designed and manufactured with high quality materials and components, which can be recycled and reused.

When this crossed-out wheeled bin symbol is attached to a product, it means the product is covered by the European Directive 2002/96/EC.

Please be informed about the local separate collection system for electrical and electronic products.

Please act according to your local rules and do not dispose of your old product with your normal household waste. The correct disposal of your old product will help prevent potential negative consequences to the environment and human health.

The build-in rechargeable battery contains substances that may pollute the environment. Always hand the appliance in at an official collection point to remove the battery before discarding the appliance. Battery should be disposed of at an official collection point.

Modifications

Modifications not authorized by the manufacturer may void user authority to operate this device.

Notice for USA

Note:

This equipment has been tested and found to comply with the limits for a Class B digital device, pursuant to part 15 of the FCC Rules. These limits are designed to provide reasonable protection against harmful interference in a residential installation. This equipment generates, uses, and can radiate radio frequency energy and, if not installed and used in accordance with the instruction manual, may cause harmful interference to radio communications.



However, there is no guarantee that interference will not occur in a particular installation. If this equipment does cause harmful interference to radio or television reception, which can be determined by turning the equipment off and on, the user is encouraged to try to correct the interference by one or more of the following measures:

- Relocate the receiving antenna.
- Increase the separation between equipment and receiver.
- Connect the equipment into an outlet on a circuit different from that to which the receiver is connected.
- Consult the dealer or an experienced radio/TV technician for help.

Notice for Canada

This Class B digital apparatus complies with Canadian ICES-003. The set complies with the FCC-Rules, Part 15 and with 21 CFR 1040.10. Operation is subject to the following two conditions:

- This device may not cause harmful interference, and
- This device must accept any interference received, including interference that may cause undesired operation.

Notice for the European Union

This product complies with the radio interference requirements of the European Union.

2 Your new player

With your newly purchased player, you can enjoy the following:

- Play video files (WMV, MPEG4 (.avi))
- Play audio files (MP3, WMA, AAC (unprotected))
- Display album art
- View pictures
- Listen to FM radio
- Record FM radio¹ and voices / sounds
- View folders

2.1 What's in the box

The following accessories are included with your player:



Player



Earphones with exchangeable caps



USB cable



Protective pouch



Quick start guide



CD-ROM containing Windows Media Player, Philips Device Manager, Media Converter for Philips, User Manual and Frequently Asked Questions

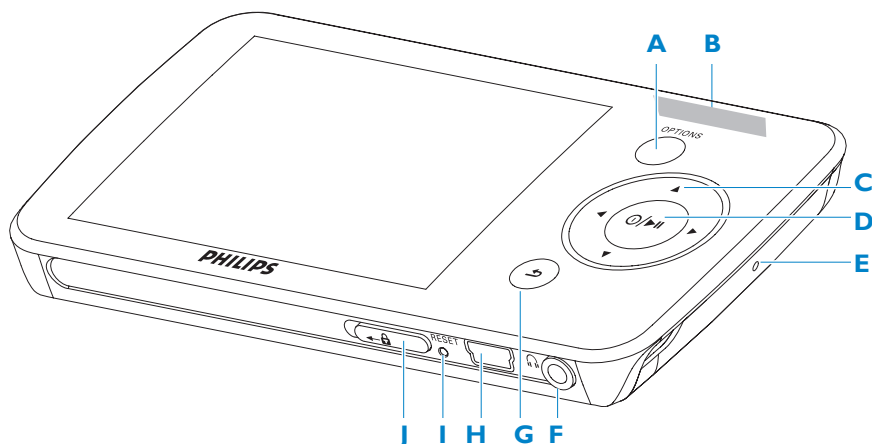
2.2 Register your product

We strongly recommend that you register your product in order to gain access to free updates. To register your product, please log on to www.philips.com/welcome so that we can inform you as soon as new updates become available.

¹ FM radio recording: This feature is available for all regions except USA and Canada.




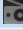



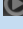
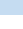
3 Getting started

3.1 Overview of controls and connections



A	OPTIONS	Offers a selection of options, depending on the current menu
B	-VOLUME+	Increases/decreases volume (hold to increase/decrease fast)
C	◀	Skips back (hold to quick skip)
	▶	Skips forward (hold to quick skip)
	▲/▼	Scrolls up/down (hold to quick scroll)
D	⏻ / ▶▶	On / Off Play/Record / Pause Confirm selection
E	MIC	Microphone
F	🎧	Headphones jack
G	↶	Back one level (hold to return to root menu)
H	🔌	USB connector
I	RESET	
J	🔒 slider	Hold slider to lock/unlock all keys (except -VOLUME+)

3.2 Main menu


Menu	To
 Music	Play digital music tracks
 Video	Watch videos
 Pictures	View pictures
 Radio	Listen to or record from FM radio ¹
 Recording	Create or listen to recordings
 Folders ¹	View folders
 Settings	Customize the settings of your player
 Now playing	Go to the play screen
 Last played	Resume play

3.3 Install

 **Important** Make sure to install the software provided in the supplied CD for music and video transfer.

System requirements:

- Windows XP (SP2 or above) or Vista
- Pentium III 800MHz processor or higher
- 128MB RAM
- 500MB hard disk space
- Internet connection
- Microsoft Internet Explorer 6.0 or later
- CD-ROM
- USB port

 **Important** You need **Windows XP Service Pack 2** to install and run this software. In case you do not have this on your PC, you will be asked to install the Service Pack. Please do install this, complete the rest of your software installation and only then connect your device. This is critical to ensure the proper working of your player when connected to the PC.

- 1 Insert the CD supplied with your product into the CD ROM drive of your PC.
- 2 Follow the on-screen instructions to complete the installation of **Windows Media Player**, **Philips Device Manager** and **Media Converter for Philips**. The Media Converter for Philips converts video clips and JPEG pictures into suitable formats for the player.
- 3 If the installation program does not start automatically, browse the CD contents with **Windows Explorer** and double click on the file ending with .exe.

Lost your CD? Don't worry, you can download the CD contents from www.philips.com/support.

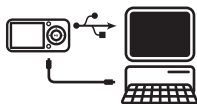
¹ FM radio recording: This feature is available for all regions except USA and Canada.

3.4 Connect and charge


When you connect the player to the PC, it automatically charges.

3.4.1 Use the supplied USB cable

- 1 Before you use the player for the first time, charge it for at least 5 hours.
 - > The battery² has a 100% charge after 4 hours and an 80% charge after 2 hours.



- 2 Connect the supplied USB cable to the mini USB port at the bottom of the player, the other end to your PC.
 - > The player will start to charge as soon as it is connected to your PC.

Note The player is fully charged when the charging animation stops and  is displayed. Your fully charged player will allow up to 30 hours² of music playback.

3.4.2 Battery level indication

The approximate power levels of your battery are indicated as follows:



Full



Two-thirds full




Half full



Low



Empty

Note When the batteries are almost empty, the battery screen  blinks. The player saves all settings and unfinished recordings and switches off in less than 60 seconds.

² Rechargeable batteries have a limited number of charge cycles. Battery life and number of charge cycles vary by use and settings.


3.6.1 Download or add videos to MediaConverter™

3.6.1.1 Download videos with Stream Ripper*

- 1 Use the **Internet Explorer** to open the website from where you want to download the video.

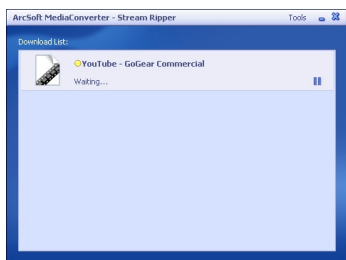
The Stream Ripper software supports downloads from the following websites:

- video.google.com
- myspace.com
- youtube.com

- 2 While playing the video on the website, move your mouse cursor over the video until you see the Stream Ripper icon  **Download** in the top left hand side corner; then click **Download**.



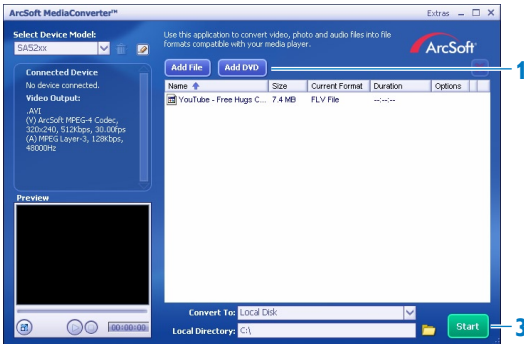
- > When the video is downloaded the MediaConverter™ opens and shows the downloaded video.



* The **Stream Ripper** download feature requires that the **FLV codec** is installed on your PC. For more information read chapter **Install** in this user manual.

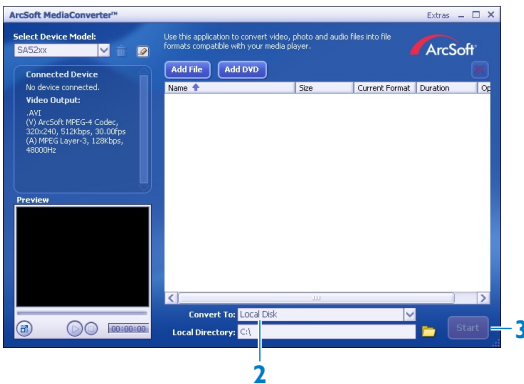
3.6.1.2 Add video files from your PC or DVD

- 1 In the **MediaConverter™ window**, click **Add File / Add DVD** to select the source of your video.
- 2 In the **pop-up window**, mark your video file, then click **Open**.
- 3 In the **MediaConverter™ window**, click **Start** to start the conversion and transfer of the video.

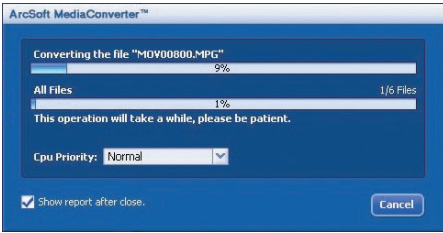


3.6.2 Convert and transfer videos with MediaConverter™

- 1 Follow section 3.6.1.1 or 3.6.1.2 to download or add a video.
- 2 In the **MediaConverter™ window**, select the destination for the video (your Philips player or local disk).
- 3 In the **MediaConverter™ window**, click **Start** to start the conversion and transfer of the video.



- > The progress of conversion and transfer is shown.
All the converted files will be transferred to the player.



*** Tip** You can also select the files in **Windows Explorer** and then drag and drop them into the **MediaConverter™ for Philips** screen.

≡ Note If needed, the files will first be converted to a format that can be played on the player.

3.7 Enjoy

3.7.1 Turn on and off

To turn on, press **⏻/▶||** until the display shows the Philips logo.

To turn off, press and hold **⏻/▶||** until the display shows 'Bye'.

*** Tip** If the player is in stop mode and no button is pressed for 10 minutes, it switches off automatically.

3.7.2 Navigate the menu

Your player has an intuitive menu navigation system to guide you through various settings and operations.

Goal	Action
Return to previous menu	Press ↶
Return to main menu	Press and hold ↶
Browse through menus	Press ▶ or ↶
Scroll through a list	Press ▲ or ▼
Select an option	Press ▶

3.7.3 Lock slider

The player has a lock switch to prevent any accidental operation.

- To lock the buttons when you play, move the lock slider to position **🔒**.
 - > All buttons except **-VOL+** are locked and the display shows **🔒**.
- To unlock the buttons again, move the lock slider to position **🔓**.

4 Organize and transfer music and pictures with Windows Media Player 11

4.1 Installing Windows Media Player 11 (WMP11)

- 1 Insert the supplied CD into the CD ROM drive of your computer.
- 2 Follow the onscreen instructions to complete the installation of **WMP11**.

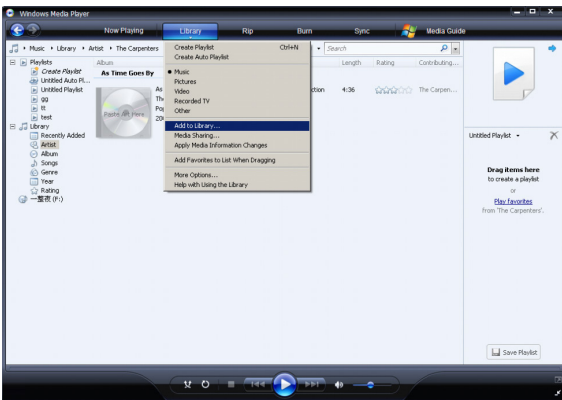
4.2 Music and picture transfer

4.2.1 Add music and picture files to WMP11 library

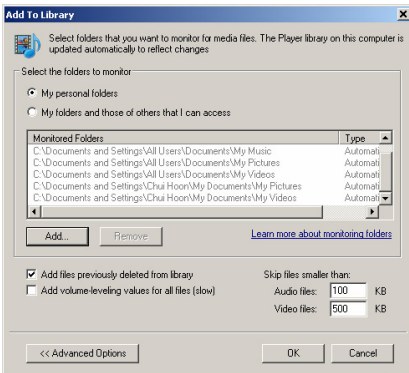
By default, **WMP11** automatically loads all the music and picture files stored in your **My Music** and **My Pictures** folder into the library. When you add new files to this folder on your computer, the new files are also automatically added to the WMP11 library.

4.2.2 Add music and picture files that are stored elsewhere on your computer or computer network

- 1 Select **Start > All Programs > Windows Media Player** to launch the **WMP11** program.
- 2 Click the down arrow beneath the Library tab and select **Add to Library...**



> **Add to Library** dialog box appears.

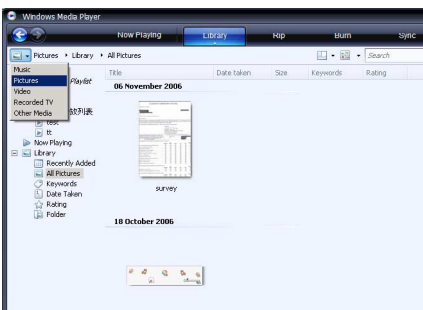


- 3 Click **<<Advanced Options** to expand the dialog box.
- 4 Click **Add...**
 - > *Add folder dialog box appears.*
- 5 Select a folder in which you have kept your music and picture files and click **OK**.
- 6 Return to **Add to library** dialog box and click **OK**.
 - > *WMP11 will start scanning the folder and add available music or picture files to the library.*
- 7 Click **Close** when done.

✿ **Tip WMP11** is configured to skip audio files that are smaller than 100KB. To include files smaller than 100KB, you can change the default settings within the **Add to library** dialog box.

4.2.3 Switch between music and pictures library in Windows Media Player and your player

To switch between music and pictures library, simply click the arrow on the top left of Windows Media Player and select the category you want to view.



4.2.4 Rip songs from a CD

If you want to transfer music from a CD to your player, you need to create a digital copy of the music on your computer first. This is called ripping.

- 1 Ensure that the PC is connected to the Internet.
- 2 Start **WMP11**.
- 3 Click the down arrow beneath the **Rip** tab and select the **Format**.



- 4 Click the down arrow beneath the **Rip** tab and select the **Bit Rate**.



5 Insert the Audio CD into the CD drive of the computer.

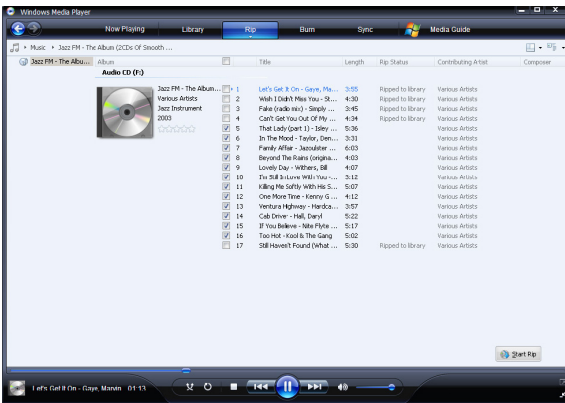
> All the tracks from the CD are listed.

By default, WMP11 starts to rip all the songs from the CD.

To modify this option, click the down arrow beneath the Rip tab and select **Rip CD Automatically When Inserted > Never**.



6 Click on the check boxes to select the songs that you want to rip.



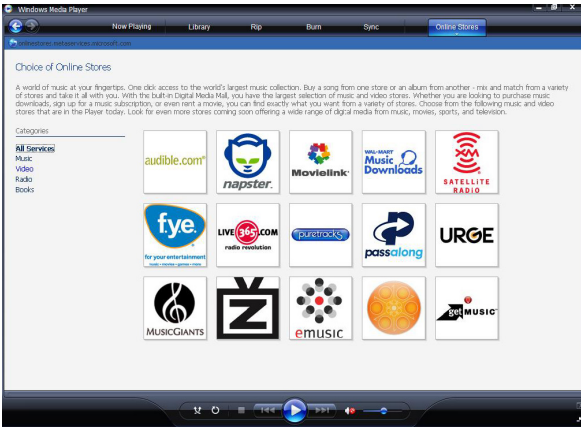
7 Click **Start Rip**.

8 The selected tracks are converted and added to the WMP11 library.

4.2.5 Buy music online

You can select a music store and buy music online.

- 1 Start **WMP11**.
- 2 Click the down arrow beneath the **Media Guide** tab and select **Browse all Online Stores**.
- 3 Choose a store and follow the on-screen instructions.



> You can find the albums or songs you purchase in the WMP11 library.

4.3 Sync your Windows Media contents to your player

You can sync your music and pictures to your player using WMP11. When you connect your player to the computer for the first time, WMP11 automatically selects the sync method (automatic or manual) that works best for your player.

Automatic: If your player has sufficient storage space (at least 4GB of free space) and your entire media library can fit on your player, your entire media library will be automatically copied to your player as soon as you connect it to your computer.

Manual: If your entire media library cannot fit on the player, then you will be prompted to manually select specific files or playlists that you want to transfer to your player.

4.3.1 Set up your player

- 1 Start **WMP11**.
- 2 Turn on your player.
- 3 Use the supplied USB cable to connect your player to the computer.

- 4 Set up sync:

If prompted, select the option to sync the device using WMP11.

If WMP11 selects to sync your device automatically, click **Finish**.

> *Your entire library will sync to your player. Thereafter, every time you connect your player to your computer, your player will sync automatically. You can also select and prioritize what syncs automatically (see 4.3.3 **Select and prioritize what syncs automatically**).*

If WMP11 selects to sync your device manually, click **Finish**.

> *You then need to click the **Sync** tab and select the files and playlists you want to sync manually (see 4.3.4 **Select files and playlists for manual sync**).*

! **Important!** Do not disconnect your player while transferring is in progress. If you disconnect your player, the transfer will not be complete and Windows might not be able to recognize your player afterwards.

4.3.2 Switch between automatic and manual sync

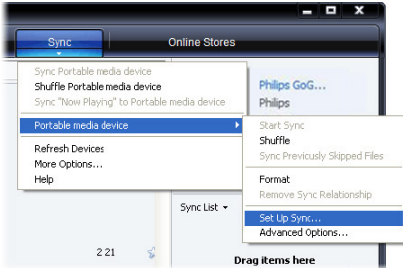
After your player is set up the first time, depending on your preference, you can switch between automatic and manual sync.

- 1 Click the down arrow beneath the **Sync** tab, select **Philips GoGear SA52xx > Set Up Sync**.
- 2 Select or clear the Sync this device automatically check box.

4.3.3 Select and prioritize what syncs automatically

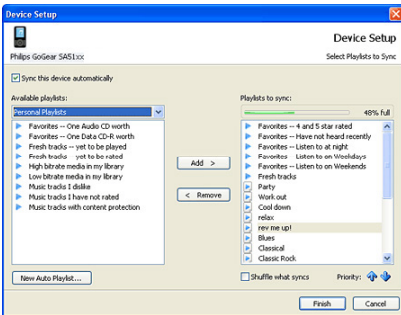
If **WMP11** has selected to sync your device automatically, you can choose not to sync your entire media library. You can choose what you wish to sync from existing playlists or create new playlists. These playlists you have selected will then sync to your player every time you connect it to your computer.

- 1 Click the down arrow beneath the **Sync** tab and select **Philips GoGear SA52xx > Set Up Sync**.



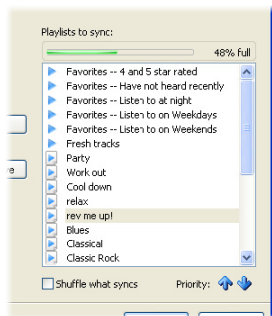
> The **Device Setup** dialog box appears.

- 2 In the **Available playlists** pane, select the existing playlists you want to sync and then click **Add**.



- 3 To create a playlist, click **New Auto Playlist** and follow the steps on the screen to specify criteria for files in the auto playlist (for details on how to create an auto playlist, see [4.4.2 Create an Auto Playlist](#)).
- 4 To remove a playlist, click the playlist in the list of **Playlists to sync**, and then click **Remove**.

- 5 In the **Playlists to sync** pane, select a playlist and click the **Priority** arrows to arrange them in the order that you want them to sync.



- > *If your player is full before sync is complete, then the files and playlists that are lower in priority on the list will not sync.*

Tip If your player has limited storage capacity, or if your media library has grown too large to fit on your player, you can shuffle the files that are in the playlists you have selected to sync. To do so, select the Shuffle what syncs check box. Thereafter, every time you connect your player to the computer, the files on your player are removed and a new set of files (from the Playlists to sync pane) are added to the device.

4.3.4 Select files and playlists for manual sync

If you sync manually, you must create a list of files and playlists you want to sync. You can also shuffle which files from your playlists to sync to your player.

- 1 Start **WMP11**.
- 2 Turn on your player.
- 3 Use the supplied USB cable to connect the player to the computer.
- 4 Click the **Sync** tab.

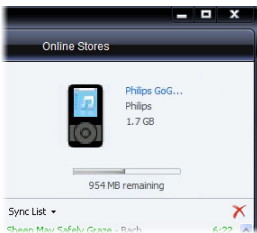
5 Drag the files and playlists that you want to sync from the Contents pane to the Sync List pane.

> You can also right click on the file or playlist and select **Add to “Sync List”**.



6 In the Sync List pane, verify that the items you have selected to sync will all fit on your player.

> If necessary, remove items from the list.



7 To remove items, right click on the item in the Sync List pane, and then select **Remove from List**.

8 Click **Start Sync** button to transfer the Sync List items to your player.

> The progress is displayed on the bottom right of WMP11.
Click **Stop Sync** to stop the transfer.

Tip If the track you are trying to sync is a protected file, you will be prompted to upgrade the security components on your computer. When this happens, play the track in WMP11 and when prompted, follow the steps on the screen to upgrade the security components. After you have upgraded your security components, sync the file to your player again.

4.3.5 Copy files from your player to your computer

Your player supports reverse sync, which lets you copy files from your player to your computer via WMP11.

- 1 Start **WMP11**.
- 2 Turn on the player.
- 3 Use the supplied USB cable to connect the player to the computer.
- 4 Click on **Philips GoGear SA52xx** in the left Navigation pane.
 - > *The content on your player is listed in the Contents pane.*
- 5 Navigate to the file or playlist you want to copy from the player to the computer.
- 6 Right click on the file or playlist and select **Copy from Device**.

4.4 Manage your Windows Media Player Playlist

Playlists allow you to mix any combination of songs or pictures you want so that you can enjoy hours of listening. You can create regular or auto playlists containing songs, pictures or both using WMP11.

4.4.1 Create a regular Playlist

- 1 Click the down arrow beneath the Library tab and select **Create Playlist**.
 - > *Untitled Playlist appears on the List pane*
- 2 Click on **Untitled Playlist** and enter a new name for the playlist.
- 3 To add items to your playlist, drag them from the Contents pane onto the List pane. Your playlist can contain both songs and pictures.



- 4 When you have finished adding items to the playlist, click **Save Playlist**.

4.4.2 Create an Auto Playlist

WMP11 can automatically generate playlists based on various criteria.

- 1 Click the down arrow beneath the **Library** tab and select **Create Auto Playlist**.
 - > A **New Auto Playlist** dialog box appears.
- 2 Enter a name for the auto playlist.

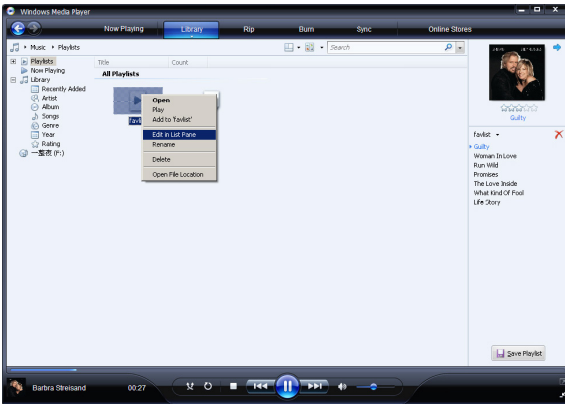


- 3 Click the first green plus sign and select your first criteria from the pull-down list.
- 4 Click on the underlined words to further define your criteria.
- 5 Click the second and third green plus signs to select and define more criteria for your auto playlist.
- 6 Click **OK** button when done.

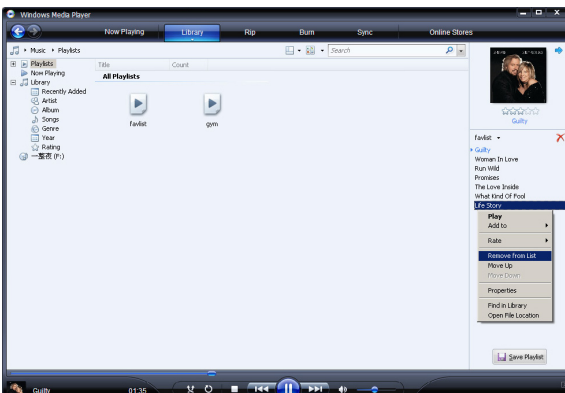
4.4.3 Edit playlist

You can edit your existing playlists at any time.

- 1 Click on **Playlists** in the left Navigation pane.



- > All your playlists will be displayed in the Contents pane.
- 2 Right click on the playlist you wish to edit and select **Edit in List Pane** from the pop-up menu.
 - > The content in the playlist appears on the List pane.
- 3 To remove an item from the playlist, right click on the item and select **Remove from List**.



- 4 To change the order of the items in the playlist, click and drag any item to a new position within the List pane.
 - 5 To add a new item to the playlist, select it from the library and drag it to the List pane.
 - 6 When you have finished editing the playlist, click the **Save Playlist** button.

4.4.4 Transfer playlists to your player

Refer to **4.3.4 Select** files and playlists for Manual Sync.

4.5 Manage your files and playlists in Windows Media Player 11

4.5.1 Search for music or pictures via WMP11

- 1 Click the **Library** tab.
- 2 To search for music files, click the arrow on the top left of WMP11 and select **Music**. To search for picture files, select **Pictures**.
- 3 Type a few keywords of the file, such as song title, artist, etc in the search box.
 - > *The results of your search appear in the Contents pane as you type, and are updated as you enter each new letter of your search.*
- 4 Keep entering keywords to fine-tune the results of your search.

4.5.2 Delete files and playlists from WMP11 library

- 1 Click the **Library** tab.
- 2 To delete music files, click the arrow on the top left of **WMP11** and select **Music**. To delete picture files, select **Pictures**.
- 3 Navigate to the file or playlist you wish to delete.
- 4 Right click on the file or playlist and select **Delete**.
- 5 Select **Delete from library only** or **Delete from library and my computer** and click **OK**.

4.5.3 Delete files and playlists from your player

You can also use WMP11 to manage the files stored on your player. When you connect your player to the computer, the contents on your player will be displayed in WMP11. You can then delete files or playlists, just as you would any other files displayed in WMP11.

- 1 Click on **Philips GoGear SA52xx** in the left Navigation pane.
 - > You can browse your player's contents in a variety of views, such as Recently Added, Artist, Album, Songs, etc.
- 2 The contents on your player will be listed in the Contents pane.
- 3 To delete music files, click the arrow on the top left of WMP11 and select **Music**. To delete picture files, select **Pictures**.
- 4 Navigate to the file or playlist you wish to delete.
- 5 Right click on the file or playlist and select **Delete**.
- 6 Click **OK**.



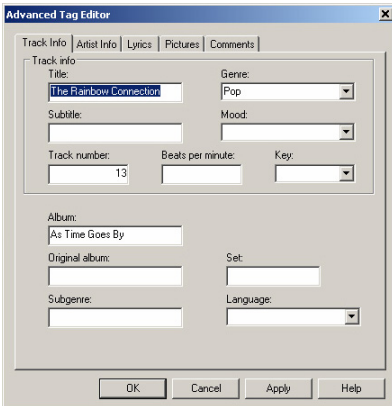
4.5.4 Edit song information via WMP11

- 1 Click the **Library** tab.
- 2 Navigate to the song you wish to edit.
- 3 Right click on the song and select **Advanced Tag Editor** from the pop-up menu.



> *The **Advanced Tag Editor** dialog box appears.*

- 4 Select the appropriate tab and enter or edit the information.



- 5 Click **OK** to save your changes.

4.5.5 Format your player via WMP11

You can reformat the hard disk on your player to erase all data.

- 1 Start **WMP11**.
- 2 Turn on the player.
- 3 Use the supplied USB cable to connect the player to the computer.
- 4 Click the down arrow beneath the Sync tab and select **Philips GoGear SA4xx > Format**.

5 Detailed operation

5.1 Music mode (also play mode for recordings)

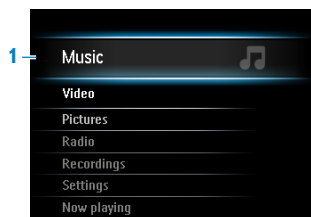
Your player supports MP3, WMA, and AAC (unprotected) formats.

5.1.1 Control

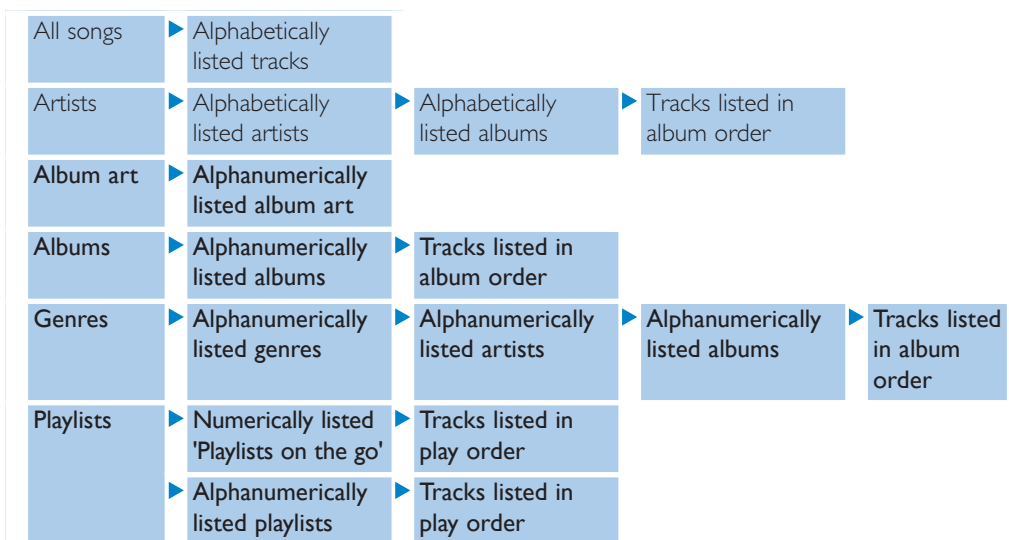
The player offers the following music mode options:

Goal	Action
Play / Pause music	Press ▶
Skip to next audio file	Press ▶
Return to previous audio file	Press ◀
Fast forward	Press and hold ▶
Fast rewind	Press and hold ◀
Return to browsing menu	Long/short press ↶
Increase volume	Press VOL +
Decrease volume	Press VOL -
Access options menu	Press OPTIONS

5.1.2 Find your music



- 1 From the main menu, select  to enter music mode. The player offers the following menu options:



- 2 Press ▲ or ▼ to scroll through the list.
- 3 Press ▶|| to select or press ↶ to return to previous level.
- 4 Press ▶|| to play.

5.1.3 Limit the volume

Listening to loud sounds for longer than a moment can be harmful to the listener. You can set the volume level of the player to suit your preferences:

- 1 From the main menu, select **Settings** > **Sound settings** > **Volume limit**.
- 2 Press **-VOLUME+** to adjust the level.
- 3 Press **▶||** to set.



- > When you set a volume limit, you can no longer exceed the set volume, even if you press the **VOLUME+** button.

To enable maximum volume again, set the volume limit back to maximum.

5.1.4 Resume play (Now playing)

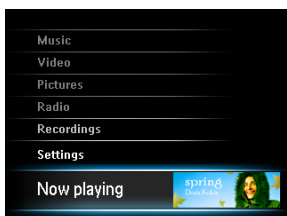
While playing, when you navigate away from the play screen, you can return to the play screen anytime.

In any menu except the main menu:

- 1 Press **OPTIONS**.
- 2 Press **▲** or **▼**, then **▶||** to select **Now playing** [current track name].

In the main menu:

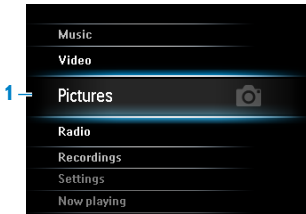
- 1 Press **▲** or **▼**, then **▶||** to select **Now playing**.









5.2 Picture library

5.2.1 View pictures




The player supports pictures in JPEG format and provides a slide show function.



- 1 From the main menu, select  to enter Picture mode.
- 2 Press  or  to browse through picture thumbnails.
- 3 Press  to see the picture in full view.
- 4 During full screen browsing, press  or  to move to next or previous picture.

5.2.2 Adding pictures to folder 'Favorites'





The **Favorites** feature enables you to share your favorite pictures more quickly. This is a useful feature when you have many picture files.

- 1 While viewing a picture, press **OPTIONS** to see the options menu.
- 2 Press  or , then  to select **Add to Favorites**.
 - > *The currently displayed picture is added to the folder Favorites.*



5.2.3 Slideshow

A slideshow displays all pictures within the album in full view. It moves to the next picture at a specified interval.

- 1 To start a slideshow in thumbnails or full screen browse mode, press **OPTIONS** to see the options menu.
- 2 Press  or , then  to select **Start Slideshow**.
- 3 To cancel the slideshow, press .

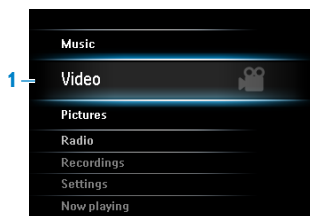
5.3 Video







5.3.1 Transfer videos from a computer to the player

Please see section 3.6 Transfer videos in this user manual.

5.3.2 Video play

You can play video clips that are stored on the player.






- 1 From the main menu, select  to enter Video mode.
 - > A list of video files stored on the player is displayed.
- 2 Press  or  to select the file and press  to play.
- 3 Short press  to go back to the previous menu, and long press  to return to the main menu.

5.3.3 Fast forward / backward control

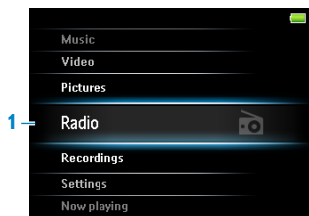
The player enables you to scan videos in fast forward / backward mode.

Fast forward / backward

- 1 Long press  to select 4x normal speed.
 - > Press  anytime to resume normal speed play.
- 2 While in 4x normal speed mode, press  to cycle through the following speed options: 8x normal speed > 16x normal speed > 4x normal speed...

5.4 Radio

From the main menu, select  to enter radio mode.



Connect the headphones

The supplied headphones serve as a radio antenna. Ensure you connect the headphones properly for an optimal reception.

5.4.1 Automatic tuning of radio stations

Note

The Autotune function saves the frequencies of found radio stations under presets and overwrites existing presets.

When there are no frequencies saved under presets, the radio feature prompts you to start Autotune.

Start a new Autotune session

- 1 While in radio mode, press **OPTIONS** to see the options menu.
- 2 Press **▲** or **▼** to select the Autotune, then **▶||** to start.
 - > *The frequencies of found radio stations are saved to presets.
The radio can store up to 20 radio stations to presets.*

5.4.2 RDS (Radio Data System)

The player supports the RDS feature of FM radio stations. RDS stations can send additional information along with the FM radio signal, such as channel information.

5.4.3 Play a preset radio station

- 1 While in radio mode, press **OPTIONS** to see the options menu.
- 2 Press **▲** or **▼** to select the **Select radio preset**, then **▶||** to begin play.
- 3 Press **◀▶** to change to another preset.

5.4.4 Manually tune a radio station

- 1 While in radio mode, press **▲** or **▼** to manually tune to a radio station:
 - > *To fine tune frequency, quick press **▲/▼**.*
 - To search for the next stronger signal, long press **▲/▼**.*

5.4.5 Manually save a radio station to a preset

- 1 While playing a radio station, press **OPTIONS** to see the options menu.
- 2 Press **▲** or **▼** to select the **Save to preset**, then **▶||** to save.



5.4.6 Record from FM radio¹ when the radio is playing








- 1 While in radio mode, press **OPTIONS** to see the options menu.
- 2 Press **▲** or **▼** to select the **Start radio recording**, then **▶||** to start.
- 3 Press **▶||** to pause.
- 4 Press **↶** to stop and save the recording.
 - > Your recordings are saved in the **Recordings library** on the player.
- 5 You can find your radio recordings files under **U** > **Recordings Library** > **Radio recordings**.

¹ FM radio recording: This feature is available for all regions except USA and Canada.

5.5 Recordings





You can record audio with the player. The section **Overview of controls and connections** shows you the location of the microphone.



- 1 From the main menu, select .
- 2 Press  or  to select the **Start voice recording**, then  to start.
- 3 Press  to pause.
- 4 Press  to stop and save the recording.
 - > Your recordings are saved in the **Recordings library** on the player.
- 5 You can find the voice recordings file under  > **Recordings Library** > **Voice recordings**.

 **Note** To record FM radio¹, see section 5.4 **Radio**.

5.5.1 Play recordings

- 1 From the main menu, select  > **Recordings Library** > **Voice recordings** or **Radio recordings**¹.
- 2 Press  or  to select the recording you want to hear.
- 3 Press  to play.


5.5.2 Upload recordings to the computer

- 1 Connect the player to your computer.
- 2 Select the player in **Windows Explorer**.
- 3 Select **Recordings** > **Voice** or **FM radio**¹.
- 4 Copy and paste the recordings to any desired location on the computer.

¹ *FM radio recording: This feature is available for all regions except USA and Canada.*

5.5.3 Delete recordings

You can delete one or all of the recordings.

- 1 From the main menu, select  > **Recordings Library** > **Voice recordings** or **Radio recordings**¹.
- 2 Press ▲ or ▼ to select the recording you want to delete.
- 3 Press **OPTIONS** to see the options menu.
- 4 Press ▲ or ▼ to select **Delete** or **Delete all**.
- 5 Press ►|| to confirm.

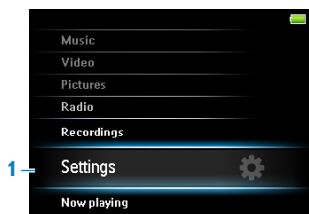
5.6 Use your player to store and carry data files

You can use your player to store and carry data files by copying data files into your player with **Windows Explorer**.

¹ *FM radio recording: This feature is available for all regions except USA and Canada.*

6 Settings

You can set preferences in your player to suit your needs.



- 1 Press and select .
- 2 Press or to select an option.
- 3 Press to go to next level or to return to previous level.
- 4 Press to confirm your selection.
- 5 Press to exit the **Settings** menu


In the Settings menu, the following options are available:

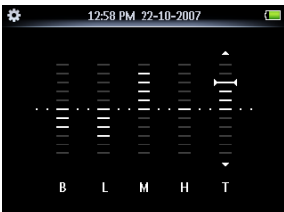
Settings	Options	Further Options
Play mode	Shuffle all	On / Off
	Repeat	Off / Repeat 1 / Repeat all
Sound settings	Volume limit	Off / Set
	FullSound	On / Off
	Equalizer	Off / Rock / Pop / Jazz / Classical / Dance / Electronica / Lounge / RnB / Hip Hop / Spoken Word / Custom
Backlight	Always on / 10 seconds / 30 seconds / 60 seconds	
Brightness	slider (5 stages)	
Sleep timer	Off / 15 minutes / 30 minutes / 60 minutes	
Language	English (default) / French / German / Spanish / Italian / (Br) Portuguese / Portuguese (European) / Dutch / Swedish / Norwegian / Finnish / Hungarian / Polish / Chinese Simplified / Chinese Traditional / Japanese / Korean / Thai (for version /97 only) / Turkish	



Settings	Options	Further Options
Screensaver	Off / Clock / Demo	
Time and Date	Time Settings	Set time format 12 hrs / 24 hrs
		Set time Hour / Minute / AM/PM
	Date Settings	Set date format dd/mm/yyyy / mm/dd/yyyy
		Set date Day / Month / Year
	Display in Header	Off / On
Skins	Dark / Light / Red	
Factory settings	Restore factory settings? Yes / No	Confirmation feedback
Information	Memory	Capacity / Available free space
	Firmware version	
	Support website	

6.1 Equalizer custom settings

You can customize the equalizer settings:

- 1 From the main menu, select .
- 2 Press **▲** or **▼**, then **▶||** to select **Sound settings**.
- 3 Press **▲** or **▼**, then **▶||** to select **Equalizer**.
- 4 Press **▲** or **▼**, then **▶||** to select **Custom**.
- 5 Press **◀** or **▶** to select equalizer band:
B = bass, **L** = low, **M** = mid, **H** = high, **T** = treble
- 6 Press **▲** or **▼** to adjust level.



- > *Bar indicator shows current level.*
- 7 Press **▶||** to confirm your selection.
 - > Press  to cancel the adjustments.
 - 8 Press  to exit the **Settings** menu.

7 Update your player

Your player is controlled by an internal program called the firmware. Newer versions of the firmware may have been released after you have purchased your player.

A software program called **Philips Device Manager** checks for firmware updates that are available on the Internet.

Install **Philips Device Manager** from the supplied CD or download the latest version from www.philips.com/support.

7.1 Perform a software update

! Attention This procedure will erase the content of the player.

- 1 Copy the content of the player to the computer as a back-up.
- 2 Disconnect the player from the computer.
- 3 Turn off your player.
- 4 Ensure the computer is connected to the Internet.
- 5 Click **Start > Programs > Philips Digital Audio Player > SA52XX > Philips SA52XX Device Manager** to launch the **Philips Device Manager**.



- 6 On the player, hold the volume "+" button while you connect the player to the computer.
 - > *The Device Manager enters recovery mode.*
- 7 Click **OK** to continue.
- 8 When the display indicates that the process is finished, disconnect the player from the computer.
 - > *The display shows **Updating firmware**.*
- 9 Wait until the update process is completed on the player.
 - > *The player restarts and is ready for use again.*
- 10 Reconnect the player to the computer.
- 11 Transfer the back-up content to the player.

8 Technical data

Power

- Power supply
880mAh Li-polymer internal rechargeable battery²

Display

- White backlight LCD, 320 x 240 pixels, 262K colors

Sound

- Channel separation: 45dB
- Equalizer setting:
Off / FullSound / Rock / Pop / Jazz /
Classical / Dance / Electronica / Lounge /
RnB / Hip Hop / Spoken Word / Custom
- Frequency response: 20-18000Hz
- Signal to noise ratio: > 84dB
- Output Power (RMS): 2x2.4mW

Audio playback

- Compression format: MP3 (8-320kps and VBR, Sample rates: 8, 11.025, 16, 22.050, 24, 32, 44.1, 48kHz), WMA (5-192kbps, Sample rates: 8, 11.025, 16, 22.050, 24, 32, 44.1, 48kHz)
- Play time: 30 hours²
- ID3-tag support

Video playback

- MPEG4 SP: Up to 640kbps in avi format, 320 x 240 pixels, 30fps (other formats to be supported by provided Media Converter for Philips)
- WMV9: Up to 512kbps, 320 x 240 pixels, 30fps (other formats to be supported by provided Media Converter for Philips)
- Play time: 6 hours²

Media Converter for Philips

- Support format:
AVI, WMV (requires WMP10 or above),
MOV (requires Quicktime), RM (requires RealPlayer)

Recording

- Audio Capturing: Build-in microphone (Mono)
- FM radio¹

Storage media

- Built-in memory capacity:
SA522x 2GB NAND Flash³
SA524x 4GB NAND Flash³
SA528x 8GB NAND Flash³

Connectivity

- Headphone 3.5mm, USB 2.0⁴

Music and picture transfer

- Drag and drop in Windows Explorer

Video transfer

- Via Media Converter for Philips

Data transfer

- Via Windows Explorer

System requirements


- Windows® XP (SP2 or above), Vista
- Pentium III 800MHz processor or higher
- 128MB RAM
- 500MB hard disk space
- Internet connection
- Microsoft Internet Explorer 6.0 or later
- Video display card
- Sound card
- CD-ROM
- USB port

- ¹ *FM radio recording: This feature is available for all regions except USA and Canada.*
- ² *Rechargeable batteries have a limited number of charge cycles. Battery life and number of charge cycles vary by use and settings.*
- ³ *1MB = 1 million bytes; available storage capacity will be less.
1GB = 1 billion bytes; available storage capacity will be less.
Full memory capacity may not be available as some memory will be reserved for the player.
Storage capacity based on 4 minutes per song and 64kbps WMA encoding.*
- ⁴ *Actual transfer speed may vary based on your operating system and software configuration.*

9 Frequently asked questions

If you encounter problems with your player, go through the following points listed in the next section. Please also check out FAQs at www.philips.com/support for further help and other troubleshooting tips.

Consult your dealer or service center if you are unable to find a solution by following these hints.

 **Warning** Under no circumstances should you try to repair the set yourself, as this will invalidate the warranty.

My player cannot power on.

- You may have failed to press and hold ►|| long enough. Press and hold ►|| until the Philips welcome screen appears on display.
- Your device battery may be out of power due to long period of non-usage. Please charge your player.

If none of the above works, then you may have to use the Device Manager to recover your player:

- 1 Launch the **Philips Device Manager** at **Start > Programs > Philips Digital Audio Player > SA52XX > Philips SA52XX Device Manager** on your PC.
- 2 Press and hold the **VOL+** button while your player is connecting to the PC.
- 3 Keep holding the key until the **Philips Device Manager** acknowledges your player and goes into recovery mode.
- 4 Click the **repair** button and follow the instructions given by the **Device Manager**.
- 5 After the player has been repaired, disconnect it from your PC and re-start.

There is no music on my player after transfer.

Are your songs in MP3, AAC or WMA format?

Other formats will not playback on the player.

There is no picture on my player after transfer.

Are your pictures in JPEG, BMP or GIF format?

Pictures in other formats cannot be transferred to your player.

There is no video on my player after transfer.

Make sure you use Media Converter for Philips (provided in the CD-ROM) to convert the video clips into the readable format to the player.

My player hangs.

- 1 In the unlikely event that your player hangs, do not panic. Insert a small pin or other sharp object into the reset hole located at the bottom of the player. Hold until the player shuts down.

 **Note** The existing contents on your player will not be erased.

- 2 If nothing happens, recharge the battery for at least 4 hours and try to power on or reset again. If this does not work, you might have to repair your player with **Philips Device Manager**.

There is no sound.

Make sure your headphones are inserted all the way into the headphones jack.

Some songs do not show up or playback on the player.

The audio file might be corrupted, try to playback the file on your PC first. If it does not play, rip the song again.

PHILIPS reserves the right to make design and specification changes for product improvement without prior notice.



Be responsible
Respect copyrights

Specifications are subject to change without notice.
Trademarks are the property of Koninklijke Philips
Electronics N.V. or their respective owners
© 2008 Koninklijke Philips Electronics N.V.
All rights reserved.
www.philips.com



Printed in China
wk8213