



# User Guide

# Features

1. **Audio Player**  
Plays MP3 or WMA audio files
2. **Video Player**  
Plays ASF video files
3. **Photo Viewer**  
Displays JPG images
4. **Clock and Calendar**  
Provides real-time clock and electronic calendar
5. **Removable Storage Function**  
Provides built-in USB flash memory and can be used as removable disk
6. **Voice Recording**  
Records voice input as WAV files
7. **LINE-IN Encoding**  
Encodes audio source from external audio player such as CD player/MD player into MP3 files
8. **Games**  
Play Tetris World and Snake games
9. **Display pictures on an external monitor such as a TV**
10. **SD/MMC memory card support**  
Access up to 1GB of SD/MMC memory card via the card slot

# Safety Precautions

**In the interests of safety, please read the following safety precautions before operation.  
Do not subject the device to severe shocks or drop it from a great height.**

Do not subject the player to extremes of heat or cold, or to dusty or damp conditions. Do not expose it to direct sunlight.

Back up data frequently in case of accident data loss.

Keep the player away from strong magnetic fields.

Keep the device away from water or other liquids. In the event that the device is exposed to water or other liquids, switch the power off immediately, take out the battery and clean the device.

To avoid corrosion, do not use chemical solution to clean the device. Clean it with a dry cloth.

No responsibility is assumed for damage or data loss caused by malfunction, misuse or repair of the device or by replacement of the battery.

Any attempt to dismantle, repair or modify the product shall void the guarantee.

## **Important Information on using "DirStructure"**

This program enables you to transfer the file structure of the takeMS CineWalker to the SD/MMC Cards without any data loss.

Connect the SD/MMC Card from a card reader or your CineWalker to your computer and copy the file "DirStructure" to the root directory of the Card.

Launch the "DirStructure" file by double clicking it. After this you should be able to see two new folders: "MP3" and "DCIM". In the DCIM folder, a subfolder named "100Media" should be located.

You will now be able to use your CineWalker with the aid of these three folders. All music files must be stored in the "MP3" folder. All photos and movie files must be stored in the "100Media" folder.

Enjoy using your CineWalker.

# Table of Content

<b>Chapter 1 Getting Started</b>	39
1.1 System Requirements	39
1.2 Accessories	39
1.3 Description of buttons	39
1.4 Installing the battery	40
1.5 Using the DC adapter	40
1.5.1 To charge the battery	40
1.5.2 To power the device	40
1.6 Inserting/Removing a memory card	41
1.7 Switching on/off	41
1.8 Converting Videos/Images	41
1.8.1 Installing the CineWalker file conversion software	42
1.8.2 Using the CineWalker file conversion software	43
1.9 Installing Driver (for Windows 98/SE)	45
1.10 Connecting to the PC and downloading files	46
1.11 Disconnecting the device from the PC safely	47
1.11.1 For Windows 2000/XP/ME	47
1.11.2 For Win98/SE	47
1.12 Connecting to a TV	47
1.13 Locking the keys	48
1.14 Use as a removable mass storage device	48
<b>Chapter 2 How to Use</b>	49
2.1 Select Working Mode	49
2.2 Using the menu	49
2.3 VIDEO	50
2.3.1 Playing Videos	50
2.3.2 Setting Play Modes	50
2.3.3 Protecting Videos	51
2.3.4 Deleting Videos	51

# Table of Content

2.4	MUSIC .....	52
2.4.1	Playing Music .....	52
2.4.2	Displaying Lyrics .....	53
2.4.3	Setting EQ Mode .....	53
2.4.4	Setting Play Mode .....	54
2.4.5	Deleting .....	54
2.5	VOICE .....	55
2.5.1	Setting Audio Source .....	55
2.5.2	Voice Recording .....	55
2.5.3	LINE-IN Recording .....	55
2.5.4	Playing Recordings .....	55
2.6	PHOTO .....	56
2.6.1	Browse Photos/Images .....	56
2.6.2	Slide Show .....	56
2.6.3	Delete Image .....	56
2.6.4	Set Boot-up Screen .....	57
2.7	GAME .....	57
2.7.1	Tetris World .....	57
2.7.2	Snake .....	57
2.8	ACCESSORIES .....	58
2.8.1	Calendar .....	58
2.8.2	System Information .....	58
2.9	SETTINGS .....	58

<b>Chapter 3</b>	<b>Technical Support .....</b>	<b>60</b>
3.1	Troubleshooting .....	60
3.2	Technical Specifications .....	62
3.3	Important Notice .....	63

# Chapter 1 Getting Started

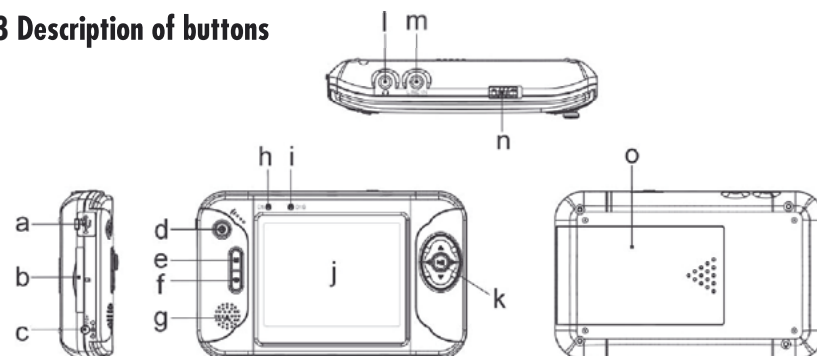
## 1.1 System Requirements

- Hardware: IBM PC & Compatible PC, Note Book with USB port
- Operating System: Windows 98/SE, Windows 2000 Service Pack 4, Windows XP, Windows ME etc.

## 1.2 Accessories

- USB Cable
- Audio/Video Cable
- Earphone with neck strap
- CineWalker file conversion software CD
- LINE-IN Cable
- DC Adapter
- Rechargeable Lithium Battery
- Carrying Case
- Warranty Card
- User Manual

## 1.3 Description of buttons

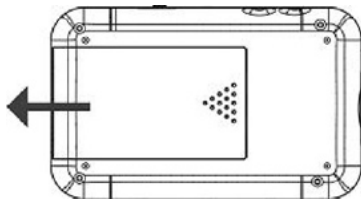


- |  |  |
|--|--|
| a. USB Port: Connect to USB cable                | k. PLAY/NAVI Button: Play/Pause                  |
| b. Memory Card Slot: Insert SD/MMC card          | Volume up/down                                   |
| c. Power Jack: Connect to DC adapter             | Previous/Next                                    |
| d. Power Switch: Power On/Power Off              | Fast forward/Rewind                              |
| e. MENU button: Display menu items               | Select/Confirm                                   |
| f. ESC button: Return or Exit                    |  |
| g. Speaker                                       | l. Audio Output/Earphone Jack: Connect to        |
| h. Power Indicator: Turns green when you         | earphone jack, audio cable or microphone         |
| power on the device                              |  |
| i. Charge Indicator: Turns red when you recharge | m. Video Output/LINE-IN Jack: Connect to video   |
| the battery                                      | cable or LINE-IN cable                           |
| j. Display                                       | n. Hold Switch: Locks keys against being pressed |
|  | accidentally                                     |
|  | o. Battery cover                                 |

### 1.4 Installing the battery

The device comes with a rechargeable lithium-ion battery. Please install the battery as shown below:

- (1) Press the point embossed with an arrow sign, and slide the battery cover as shown below to remove it.



- (2) Place the battery into the battery compartment, making sure it is correctly aligned.
- (3) Close the battery cover.

### 1.5 Using the DC adapter

#### 1.5.1 To charge the battery

After installing the battery, you need to charge it using the DC adapter. Charging the battery fully takes about 3.5 hours. To charge the battery, follow these steps:

- (1) Connect one end of the adapter to the power jack.
- (2) Connect the other end to the electrical outlet.

#### Note:

- a. The charge indicator turns red during charging. When the battery is fully charged, the charge indicator switches off.
- b. You can still operate the machine while the battery is being charged.

#### 1.5.2 To power the device

The DC adapter can be used not only to charge the battery but also to supply power to the device. To conserve the battery's charge, you can remove the battery and just use the DC adapter to power the device.

When the DC adapter is connected, the power indication "⚡" appears at the upper right of the screen.

### 1.6 Inserting/Removing a memory card

The device contains a card slot for a memory card. Memory cards can be inserted according to the procedure below:

- (1) On the left side of the machine, there is a card slot.
  - (2) Insert the memory card face-down into the slot.
- The display shows the memory card symbol "II" on the top bar.



To remove the card, press it first and then pull it out.

**Note:** Make sure the device is powered off before you insert or remove a memory card. Never insert or remove a card when the device is working, as the card or the device may be damaged.

### 1.7 Switching on/off

To switch on the device, press and hold the **Power Switch** until the power indicator lights up. To switch off the device, press and hold the **Power Switch** until the screen is off.

### 1.8 Converting Videos/Images

Before you download a video or image from a PC to the device, please convert into a supported file type by using the included Transcoding Tool on the CineWalker file conversion software CD.

The device supports MP3/WMA audio, ASF video and JPG image files.

The following tables show which file types can be converted:

Category	File Type	Convertible
Video	.mov	Yes (Some)
	.mpg	Yes
	.avi	Yes
	.asf	Yes
	wmv	Yes (Some)
	.rm	No
Image	.jpg	Yes
	.bmp	Yes
	.tiff	Yes
	.gif	Yes
	.pcx	No
Audio	.wma	Yes (Some)
	.mp3	Yes
	.ogg	Yes
	.wav	Yes

ENCODING			
MPEG-1			Yes
MPEG-2			Yes
MPEG-4	MSMPEG4	V1	Yes
		V2	Yes
		V3	Yes
	DivX	3	Yes
		4	Yes
		5	Yes
	WMV	8	Yes
		9	Yes
		10	No
Etc.	Motion JPEG		Yes
	Huffyuv		Yes

### 1.8.1 Installing the CineWalker file conversion software

#### - System Requirement

Make sure your computer meets the following requirements before installing.

If not, please upgrade your Windows system:

- DirectX 9.0 or above
- Windows Media Player 9.0 or above

#### - Installation

Follow these steps to install the tool:

- Place the driver CD in the CD-ROM tray.
- Navigate to the CD drive, and double click to open it.

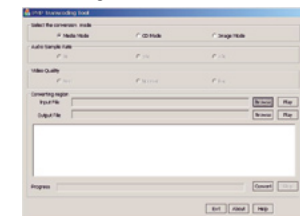
- Open the "CineWalker file conversion software" folder, where there should be two folders named as "Win2000&XP" and "Win98&ME". For Windows 2000 or Windows XP OS, open the "Win2000&XP" folder; for Windows 98 or Windows ME, open the "Win98&ME" folder.
- Run the Setup.exe file, and then install the tool following the on-screen instructions.
- The software is named "PMP Transcoding Tool".

### 1.8.2 Using the CineWalker file conversion software

#### - Converting Audio/Video Files

Video files can be converted as follows:

- On the bottom Windows taskbar, click "Start" → "Programs" → "CineWalker file conversion software" to run the tool.
- When you see the following screen, select "Media Mode".

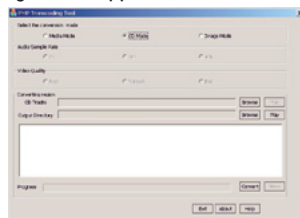


- Click the "Browse" button for the "Input File" field to specify the file that you want to convert. If you want to preview the file, click the "Play" button.
- Click the "Browse" button for the "Output File" field to specify where the converted file is to be saved.
- In the "Audio Sample Rate" column, set the audio quality. The higher the sample rate the better the audio quality will be; in the "Video Quality" column, set the video quality. Higher quality needs more storage space.
- Click "Convert" to start converting.
- Wait for the conversion to finish. When you are prompted, click "OK" to finish.

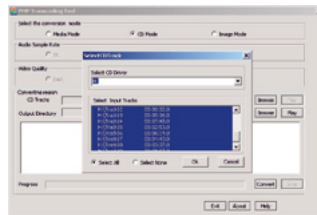
### - Converting CD tracks

You can convert tracks on a CD to audio files that are supported by the device:

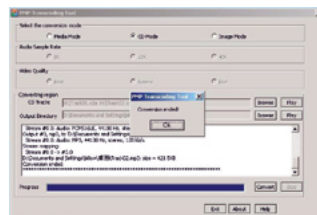
- (1) On the bottom Windows taskbar, click "Start" → "Programs" → "CineWalker file conversion software" to run the tool.
- (2) When the following screen appears, select "CD Mode".



- (3) Click "Browse" button for the "CD Tracks" field to specify the CD that you want to convert. To convert all tracks, select "Select All". To select tracks from the list, hold down the "Ctrl" or "Shift" key and click the desired tracks. Click "Ok" after selection.



- (4) Click the "Browse" button for the "Output Directory" field to specify where the converted tracks will be saved.
- (5) Click "Convert" to start converting.
- (6) Wait for the conversion to finish. When you are prompted, click "Ok" to finish.



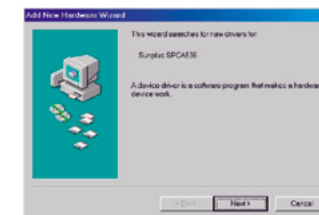
### - Converting Images:

- (1) On the bottom Windows taskbar, click "Start" → "Programs" → "CineWalker file conversion software" to run the tool.
- (2) Select "Image Mode".
- (3) Click the "Browse" button for the "Input File" field to specify the file that you want to convert. If you want to preview the file, click the "Play" button.
- (4) Click the "Browse" button for the "Output File" field to specify where the converted file is output.
- (5) Click the "Convert" to start converting.
- (6) Wait for the conversion to finish. When you are prompted, click "Ok" to finish.

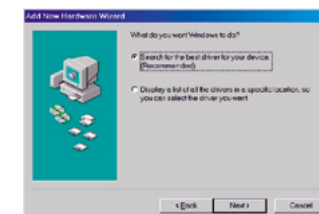
## 1.9 Installing Driver (for Windows 98/SE)

This device is Plug & Play for Windows 2000, Windows ME and Windows XP. For Windows 98/SE, you need to install a driver before connecting it to the PC. The driver is provided on the driver CD. Please follow these steps to install the driver:

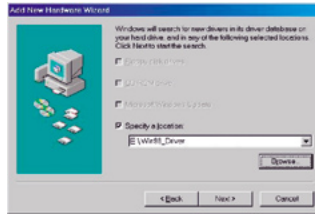
- (1) Insert the driver CD into the CD-ROM of the computer.
- (2) Power on the device and connect it to the PC.
- (3) When you are prompted by the following message, click "Next" to continue.



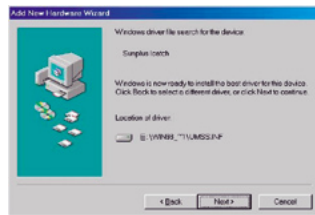
- (4) Select "Search for the best driver for your device (Recommended)" and click "Next" to continue.



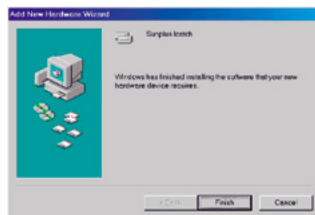
- (5) Click the “Browse” button to specify the location of the driver CD and click “Next” to continue.



- (6) Click “Next” to continue.



- (7) Click “Finish” to finish the installation.



## 1.10 Connecting to the PC and downloading files

To connect the device to the PC and download files:

- (1) Insert a memory card (optional).
- (2) Switch on the device.
- (3) Connect one end of the USB cable to the PC’s USB port, and connect the other end to the device’s USB interface.
- (4) Double-click “My Computer” on the desktop and should see up to two new disk drives indicated as removable disks. The first one is the internal flash memory of the device, and the second one is any external memory card you have inserted in the device.

- (5) Double-click one of the two removable disk drives and two folders called “DCIM” and “MP3” should be displayed (if not, you need to create these folders manually). Copy audio files such as MP3, WMA or WAV files to the “MP3” folder, and copy video files such as photos, movies, or video clips to the “DCIM/100MEDIA” folder.


### Note:

- (1) Before connecting to a PC, make sure the battery charge is sufficiently charged or the DC adapter is connected. Any sudden disconnection during data transfer may cause data loss.
- (2) For Windows 2000, if the system cannot identify the memory card, please install Service Pack 4.

## 1.11 Disconnecting the device from the PC safely

In order to avoid data loss, please remove the device from the PC as follows:

### 1.11.1 For Windows 2000/XP/ME:

- (1) Left-click the  icon at the right hand corner of the taskbar.
- (2) Click the pop-up mini-window containing the message “Stop the USB Mass Storage Device — Drive (X)”.
- (3) When you are prompted to remove the device, disconnect it.

### 1.11.2 For Win98/SE

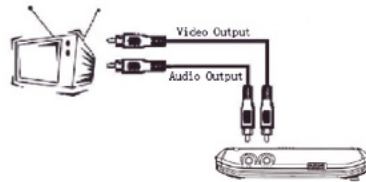
Please make sure that data transfer has ceased before you disconnect the device.

## 1.12 Connecting to a TV

The device comes with an audio output port and a video output port. With these ports, you can connect the device to a TV and display pictures on the TV screen. Follow these steps to connect the device to a TV:

- (1) Power on the device.
- (2) Remove the audio/video cable from the package. Connect the end with two connectors to the device, connecting the yellow connector (the Line-in jack) to the video port and the black connector (the earphone jack) to the audio port. Connect the other end to the TV, connecting the yellow connector to the video port and the two black connectors to the audio port.





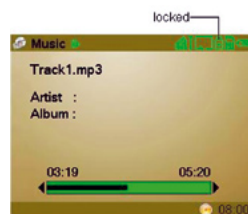
- (3) On the main menu, push the **PLAY/NAVI** button to select "Settings" and press the **PLAY/NAVI** button to display the settings.
  - (4) Select "Video Out" and press the **PLAY/NAVI** button to confirm.
  - (5) Move the **PLAY/NAVI** button up or down to select "TV-PAL" or "TV-NTSC" depending on the TV/video standard, and press the **PLAY/NAVI** button to confirm.
- When the settings have been adjusted as shown above the operating window will be transferred to the TV screen. You can use the keys to operate the device and view the result on the TV screen.

**Note:** To leave TV mode and switch the screen output back to the device, go to Settings mode and set the "Video Out" to "LCD".

### 1.13 Locking the keys

When you are listening to music or playing a movie, you can lock the keys against being pressed accidentally by using the **Hold Switch**. Slide the **Hold Switch** to the left to lock the keys. A lock indication will appear on the top bar (see below).

To re-enable the keys, slide the **Hold Switch** to the right. The lock indicator will disappear.



**Note:** You can still power on or power off the device even when the keys are locked.

### 1.14 Use as a removable mass storage device

The device has built-in flash memory of up to 128MB. It can be used as a portable mass storage device to store all types of files and documents. Just connect the device to a PC, and download or upload data.

## 2.1 Select Working Mode

This device has six Working Modes:

**Video** — Play and manage videos.

**Audio** — Play music and record voice input.

**Photo** — View and manage photos/images.

**Game** — Play fun games including Tetris World and Snake.

**Accessories** — View electronic calendar and system information.

**Setting** — Customise system settings.

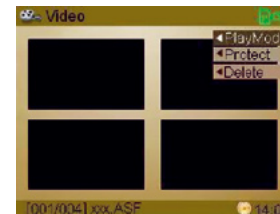


Move the **PLAY/NAVI** button to Select mode and press the **PLAY/NAVI** button to enter the working mode selected.

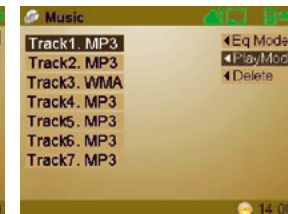
## 2.2 Using the menu

To use menu items when you are in the appropriate working mode:

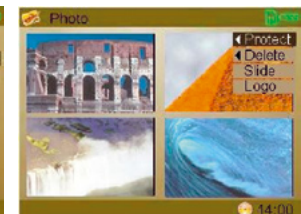
- (1) Press the **MENU** button on the screen that appears first when you enter the selected mode.



(VIDEO mode)



(MUSIC mode)



(PHOTO mode)

- (2) Move the **PLAY/NAVI** button up and down to select item from the menu list.  
(Note: an arrow to the left of the menu item means that item is divided into submenus).
- (3) Move the **PLAY/NAVI** button left to display the submenus.
- (4) Press the **PLAY/NAVI** button to confirm the selected menu item.

## 2.3 VIDEO

### 2.3.1 Playing Videos

In Video mode, you can play, delete or manage ASF video files:

- (1) When you enter Video mode, move the **PLAY/NAVI** button to select the video that you want to play.



- (2) Press the **PLAY/NAVI** button to play the selected video.

During playback, you can:

Adjust Volume	Move the <b>PLAY/NAVI</b> button up and down
Play the previous video	Move the <b>PLAY/NAVI</b> button left
Play the next video	Move the <b>PLAY/NAVI</b> button right
Fast forward	Move the <b>PLAY/NAVI</b> to the right and keep it pressed down
Fast rewind	Move the <b>PLAY/NAVI</b> to the left and keep it pressed down
Pause/Resume	Press <b>PLAY/NAVI</b>
Stop	Press the <b>ESC</b> button

### 2.3.2 Setting Play Modes

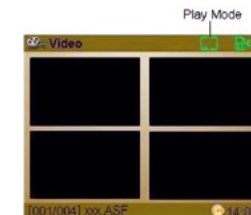
This option provides two play modes to play all types of video:

Normal — Play all videos in order and repeat

Random — Play all videos in random order and stop once all have been played

To set play mode:

- (1) In the thumbnail preview mode, press the **MENU** key to show the menu.
- (2) Move the **PLAY/NAVI** button up and down to select “Play Mode”.
- (3) Move the **PLAY/NAVI** button left to show play mode options.
- (4) Move the **PLAY/NAVI** button up and down to select option, and press the **PLAY/NAVI** button to confirm.



### 2.3.3 Protecting Videos

To protect a video from being deleted or overwritten accidentally, you can make the video write-protected following these steps:

- (1) In the thumbnails preview mode, shortly press the **MENU** key to show the menu.
- (2) Move the **PLAY/NAVI** button up and down to select “Protect”.
- (3) Move the **PLAY/NAVI** button left to show options.
- (4) Move the **PLAY/NAVI** button up and down to select “Protect”, and press the **PLAY/NAVI** button to confirm.

A lock icon appears on the top bar when the video is protected.



To disable write-protection, select “Protect” and then “Unprotect” from the menu.

### 2.3.4 Deleting Videos

- Delete Single Video:

- (1) In the thumbnails preview mode, select the video that you want to delete.
- (2) Press the **MENU** key to show the menu.
- (3) Move the **PLAY/NAVI** button up and down to select “Delete”.
- (4) Move the **PLAY/NAVI** button left to show the options.
- (5) Move the **PLAY/NAVI** button up and down to select “Delete One”, and press the **PLAY/NAVI** button to confirm.

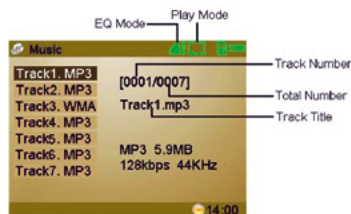
- (6) Move the **PLAY/NAVI** button left to select “YES” to confirm deletion or select “NO” to cancel.

#### - Delete All Videos:

- (1) In the thumbnails preview mode, press the **MENU** key to show the menu.
- (2) Move the **PLAY/NAVI** button up and down to select “Delete”.
- (3) Move the **PLAY/NAVI** button left to show the options.
- (4) Move the **PLAY/NAVI** button up and down to select “Delete All”, and press the **PLAY/NAVI** button to confirm.
- (5) Move the **PLAY/NAVI** button left to select “YES” to confirm deletion or select “NO” to cancel.

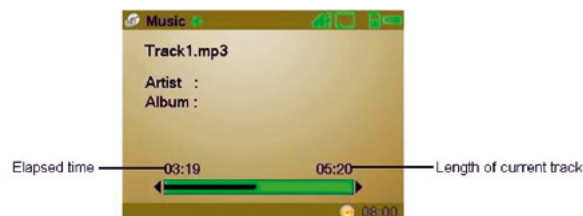
## 2.4 MUSIC

On the main menu, select “Audio” and then “Music” to enter music mode.



### 2.4.1 Playing Music

- (1) Within the playlist, move the **PLAY/NAVI** up and down to select the track that you want to play.
- (2) Press the **PLAY/NAVI** button to play the selected track.



During playback, you can:

**Adjust Volume**

**Play the previous track**

**Play the next track**

**Fast forward**

**Fast rewind**

**Switch EQ mode**

**Pause/Resume**

**Stop**

Move the **PLAY/NAVI** button up and down

Move the **PLAY/NAVI** button left

Move the **PLAY/NAVI** button right

Move the **PLAY/NAVI** to the right and keep it pressed down

Move the **PLAY/NAVI** to the left and keep it pressed down

Press the **MENU** button

Shortly press the **PLAY/NAVI** button

Press the **ESC** button

### 2.4.2 Displaying Lyrics

Music mode supports synchronous lyrics display. You can display the current track's lyric following these steps:

- (1) Download the lyrics file for current track to the device. Make sure the lyrics file and the track are in the same directory.
- (2) Rename the lyrics file with the same name as the track name.
- (3) Play the track. The lyrics will be displayed.

**Note:** Synchronous lyrics display is only available for MP3 files with fixed bit rates. You cannot display lyrics for WMA and MP3 files with variable bit rates.

### 2.4.3 Setting EQ Mode

The Equaliser setting is only available in Music mode. There are six EQ modes for you to choose from: Normal, Classical, Pop, Rock, Jazz and Bass. The EQ mode can be set as follows:

- (1) On the playlist screen, press the **MENU** key to show the menu.
- (2) Move the **PLAY/NAVI** button up and down to select “EQ Mode”.
- (3) Move the **PLAY/NAVI** button left to show options.
- (4) Press the **PLAY/NAVI** button to confirm.

#### 2.4.4 Setting Play Mode

This option provides four play modes to play all music files:

**Rep One** — Repeat the current track

**Rep All** — Repeat all tracks

**Random** — Play all tracks randomly

**Normal** — Play all tracks in order and stop when all have been played

The play mode can be set as follows:

- (1) On the playlist screen, press the **MENU** key to show the menu.
- (2) Move the **PLAY/NAVI** button up and down to select “EQ Mode”.
- (3) Move the **PLAY/NAVI** button left to show options.
- (4) Press the **PLAY/NAVI** button to confirm.

#### 2.4.5 Deleting

- **Delete Single Track:**

- (1) On the playlist, select the track that you want to delete.
- (2) Press the **MENU** key to show the menu.
- (3) Move the **PLAY/NAVI** button up and down to select “Delete”.
- (4) Move the **PLAY/NAVI** button left to show the options.
- (5) Move the **PLAY/NAVI** button up and down to select “Delete One”, and press the **PLAY/NAVI** button to confirm.
- (6) Move the **PLAY/NAVI** button left to select “YES” to confirm deletion or select “NO” to cancel.

- **Delete All Tracks:**

- (1) On the playlist screen, press the **MENU** key to show the menu.
- (2) Move the **PLAY/NAVI** button up and down to select “Delete”.
- (3) Move the **PLAY/NAVI** button left to show the options.
- (4) Move the **PLAY/NAVI** button up and down to select “Delete All”, and press the **PLAY/NAVI** button to confirm.
- (5) Move the **PLAY/NAVI** button left to select “YES” to confirm deletion or select “NO” to cancel.

#### 2.5 VOICE

In voice mode, you can record voice input into WAV audio files. To record voice input, select “Audio” and then “Record” from the main menu. Then press the **PLAY/NAVI** button to enter voice mode.

##### 2.5.1 Setting Audio Source

Before recording, make sure the audio source is set to “MIC”. The audio source can then be set as follows:

- (1) Press the **MENU** key to show the “Audio Source” menu.
- (2) Move the **PLAY/NAVI** button left to display two options — MIC and Line-in.
- (3) Select “MIC” and then press the **PLAY/NAVI** button to confirm.

##### 2.5.2 Voice Recording:

- (1) Press the **PLAY/NAVI** button to start recording.
- (2) Press the **PLAY/NAVI** again to stop recording.

##### 2.5.3 LINE-IN Recording

You can also make digital audio recording from a line level audio source (Line-in) such as a cassette player, CD player or the line output of your home stereo system. Follow these steps to make LINE-IN recording:

- (1) Set Audio Source to “Line-In” (refer to section 2.5.1 — Set Audio Source).
- (2) Connect one end of the line-in cable to an audio port, such as the earphone jack, of another audio player. Connect the other end to the Line-in jack of the device.
- (3) Play audio files on an audio player.
- (4) Press the **PLAY/NAVI** button on the device to start recording.
- (5) Press the **PLAY/NAVI** button to stop recording.

##### 2.5.4 Playing Recordings

The recorded content is automatically saved in the same directory as the music files, i.e. \MP3. To play the content, you have to be in Music mode:

- (1) Enter MUSIC mode. The recordings will be listed at the top of the playlist.
- (2) From the playlist, select the recording that you want to play.
- (3) Press the **PLAY/NAVI** button to play the recording.

To delete a recording, see the steps in the “2.4.5 - Delete Track” section.

**Note:** Make sure the device has enough power to record. If the device shuts down abruptly during recording, the recorded content will not be saved.

## 2.6 PHOTO

In the PHOTO mode, you can view and manage photos and still images. On the main menu, select “PHOTO” and press the **PLAY/NAVI** button to use the photo viewer.

### 2.6.1 Browse Photos/Images:

- (1) When you enter PHOTO mode, thumbnails of all images will be displayed.
- (2) Move the **PLAY/NAVI** button to select photo/image.
- (3) Press the **PLAY/NAVI** button to blow up the selected picture to full-screen size.
- (4) When the picture is displayed in full-screen, you can:

View the previous image	Move the <b>PLAY/NAVI</b> button left
View the next image	Move the <b>PLAY/NAVI</b> button right
Zoom In	Move the <b>PLAY/NAVI</b> up
Zoom Out	Move the <b>PLAY/NAVI</b> down
Return/Exit	Press the <b>ESC</b> button

### 2.6.2 Slide Show

You can view photos in slide show mode. Follow these steps to display them as a slide show:

- (1) On the thumbnails screen, shortly press the Menu key to show the menu.
- (2) Select “Slide” and press the **PLAY/NAVI** button to start slide show.
- (3) During the slide show, you can press the **MENU** button to increase the speed.
- (4) When the slide show has finished, press the **ESC** button to exit.

### 2.6.3 Delete Image

#### - Delete Single Image:

- (1) In the thumbnail preview mode, select the image that you want to delete.
- (2) Press the **MENU** button to show the menu.
- (3) Move the **PLAY/NAVI** button up and down to select “Delete”.
- (4) Move the **PLAY/NAVI** button left to show the options.
- (5) Move the **PLAY/NAVI** button up and down to select “Delete One”, and press the **PLAY/NAVI** button to confirm.
- (6) Move the **PLAY/NAVI** button left to select “YES” to confirm deletion or select “NO” to cancel.

#### - Delete All Images:

- (1) In the thumbnail preview mode, press the **MENU** key to show the menu.
- (2) Move the **PLAY/NAVI** button up and down to select “Delete”.
- (3) Move the **PLAY/NAVI** button left to show the options.
- (4) Move the **PLAY/NAVI** button up and down to select “Delete All”, and press the **PLAY/NAVI** button to confirm.
- (5) Move the **PLAY/NAVI** button left to select “YES” to confirm deletion or select “NO” to cancel.

### 2.6.4 Set Boot-up Screen

You can specify a photo or image to be shown as a boot-up screen when you start up the device:

- (1) In the thumbnail preview mode, select one image.
- (2) Press the **MENU** button, and select “Logo”. Then press the **PLAY/NAVI** button to confirm.

## 2.7 GAME

The device offers two interesting games: Tetris World and Snake. Follow these steps to play the games.

### 2.7.1 Tetris World:

- (1) From the main menu, select “Game” and then “Tetris World”. Then press the **PLAY/NAVI** button to enter the play screen.
- (2) Press the **PLAY/NAVI** button to start the game.
- (3) Move the **PLAY/NAVI** button left, right and down to move the block. Move the **PLAY/NAVI** button up to rotate the block. Press the **PLAY/NAVI** button to pause or resume.
- (4) Press the **ESC** button to end the game.

### 2.7.2 Snake:

- (1) From the main menu, select “Game” and then “Snake”. Then press the **PLAY/NAVI** button to enter the play screen.
- (2) Press the **PLAY/NAVI** button to start game.
- (3) Aim at the red dot. Move the snake by pushing the **PLAY/NAVI** button in one of the four directions to eat the dot. Press the **PLAY/NAVI** button to pause or resume.
- (4) Press the **ESC** button to end the game.

## 2.8 ACCESSORIES

### 2.8.1 Calendar

Move the **PLAY/NAVI** button to indicate the date.



### 2.8.2 System Information

Gives the software version number and the capacity of the current active storage (Note: if you are using a memory card, it shows the capacity of the memory card. Otherwise, it shows capacity of the in-built flash memory).



## 2.9 SETTINGS

The following settings can be adjusted:

Setting	Function	Steps
Clock	Sets the system clock and date.	<ol style="list-style-type: none"> <li>(1) Move the <b>PLAY/NAVI</b> button left and right to select Year, Month and Day.</li> <li>(2) Move the <b>PLAY/NAVI</b> button up and down to adjust value.</li> <li>(3) Press the <b>PLAY/NAVI</b> button to confirm.</li> </ol>
Video Out	Selects video output media. TV-PAL: video output to TV with PAL standard. TV-NTSC: video output to TV with NTSC standard. LCD: video output to the device's LCD	<ol style="list-style-type: none"> <li>(1) Move the <b>PLAY/NAVI</b> button up and down to select option.</li> <li>(2) Press the <b>PLAY/NAVI</b> button to confirm.</li> </ol>

Storage	Sets the storage medium used. <b>Internal Memory:</b> uses the built-in flash memory. <b>Memory Card:</b> uses the memory card. <b>PC-DEVICE:</b> upgrades firmware.  <b>WARNING!</b> <b>"PC-DEVICE" option is to be used only for firmware upgrades. Do not use this option unless a firmware upgrade is required. Any other use will cause a system error when the device is connected to a computer.</b>	<ol style="list-style-type: none"> <li>(1) Move the <b>PLAY/NAVI</b> button up and down to select option.</li> <li>(2) Press the <b>PLAY/NAVI</b> button to confirm.</li> </ol>
Format	Formats the memory card or in-built flash memory.	<ol style="list-style-type: none"> <li>(1) Move the <b>PLAY/NAVI</b> button up and down to select option.</li> <li>(2) Move the <b>PLAY/NAVI</b> button left to select "YES".</li> <li>(3) Press the <b>PLAY/NAVI</b> button to confirm.</li> </ol>
Power Off	Sets the length of time after which the player switches off automatically when it is not being used.	<ol style="list-style-type: none"> <li>(1) Move the <b>PLAY/NAVI</b> button up and down to select option.</li> <li>(2) Press the <b>PLAY/NAVI</b> button to confirm.</li> </ol>
Sleep Off	Sets the length of time after which the LCD turns off automatically during audio playback. Enables or disables keytones.	<ol style="list-style-type: none"> <li>(1) Move the <b>PLAY/NAVI</b> button up and down to select "Screen" or "Key-press Tone".</li> <li>(2) Move the <b>PLAY/NAVI</b> button left and right to switch Off and On.</li> <li>(3) Press the <b>ESC</b> button to return.</li> </ol>
Language	Sets the display language.	<ol style="list-style-type: none"> <li>(1) Move the <b>PLAY/NAVI</b> button up and down to select option.</li> <li>(2) Press the <b>PLAY/NAVI</b> button to confirm.</li> </ol>
Default	Restores default system settings.	<ol style="list-style-type: none"> <li>(2) Move the <b>PLAY/NAVI</b> button left to select "YES".</li> <li>(3) <b>PLAY/NAVI</b> button left to select "YES"</li> <li>(3) Press the <b>PLAY/NAVI</b> button to confirm.</li> </ol>



### 3.1 Troubleshooting

Problem	Possible Cause	Solution
The device cannot be switched on.	<ul style="list-style-type: none"> <li>· Battery charge is too low.</li> <li>· The battery is not inserted correctly.</li> <li>· The DC adapter is not properly connected.</li> </ul>	<ul style="list-style-type: none"> <li>· Charge the battery.</li> <li>· Reinsert the battery.</li> <li>· Reconnect the DC adapter.</li> </ul>
The player cannot be switched on even when the battery is replaced.	<ul style="list-style-type: none"> <li>· The FAT table in the flash memory may be corrupted if it has been exposed to a strong magnetic field or static electricity or if it has been unplugged incorrectly.</li> <li>· Other (unknown)</li> </ul>	Please contact your vendor for help.
Keys do not respond.	Keys are locked by the Hold Switch.	Slide the Hold Switch to unlock keys.
The lyrics are not displayed synchronously.	<ul style="list-style-type: none"> <li>· The LRC file is not synchronised with the track.</li> <li>· For VBR tracks, fast-forwarding or rewinding can cause the problem.</li> </ul>	<ul style="list-style-type: none"> <li>· Re-download the lyrics file.</li> <li>· Do not fast-forward or rewind when you are playing a VBR track.</li> </ul>
No sound during playback	<ul style="list-style-type: none"> <li>· The audio file is corrupted.</li> <li>· The volume is too low.</li> </ul>	<ul style="list-style-type: none"> <li>· Turn the volume up.</li> <li>· Skip or delete the file.</li> </ul>
The image is not displayed.	<ul style="list-style-type: none"> <li>· The image format is not supported.</li> <li>· The image data is corrupted.</li> </ul>	<ul style="list-style-type: none"> <li>· Make sure the image is of a supported file type (JPEG). If not, use the CineWalker file conversion software to convert it.</li> <li>· Download the image again.</li> </ul>
Noise is heard on A WMA track the track skips intermittently.	Bit rate of the track is not supported.	Make sure the bit rate of the track is within the 32kbps - 160kbps range.
Some MP3 files do not play properly.	The MP3 file is compressed according to a standard, e.g. the device does not support.	<ul style="list-style-type: none"> <li>· Delete the unsupported MP3 files.</li> <li>· Use MPEG I Layer 3 standard to compress unsupported MP3 files.</li> </ul>

A video does not play.	<ul style="list-style-type: none"> <li>· The video format is not supported.</li> <li>· The video data is corrupted.</li> </ul>	<ul style="list-style-type: none"> <li>· Make sure the video is a supported file type (ASF). If not, use the CineWalker file conversion software to convert it.</li> <li>· Download the video again.</li> </ul>
The memory card cannot be read by the computer.	<ul style="list-style-type: none"> <li>· Service Pack 4 has not been installed in Windows 2000.</li> <li>· The memory card type is not supported or the card is corrupted.</li> </ul>	<ul style="list-style-type: none"> <li>· Install Windows 2000 SP4.</li> <li>· Replace the memory card.</li> </ul>
The device is unresponsive.		<ul style="list-style-type: none"> <li>· Reconnect the adapter.</li> <li>· Remove the battery and reinsert it.</li> </ul>
Cannot delete a file	The file is write-protected.	· Disable write protection.
Cannot connect to the PC	<ul style="list-style-type: none"> <li>· The Windows 98 driver is not installed.</li> <li>· The USB interface is not supported by the PC's motherboard.</li> </ul>	<ul style="list-style-type: none"> <li>· Install or reinstall the driver provided with the device.</li> <li>· Update or replace the PC's motherboard.</li> </ul>
PC displays an error message when the device is plugged in or unplugged.	The device loses connection from the PC abruptly whilst transferring files.	Do not disconnect the player from the PC whilst transferring files.
Total memory displayed on the player is not in accordance with the amount displayed.	Part of the memory is used to store programs and display characters.	

### 3.2 Technical Specifications

Component	Description
USB Port	USB2.0 Full Speed
LCD	2.5 inch, 320 x 240 pixels TFT
Internal Memory	128MB
Memory Card	MMC, SD
Video Format	ASF
Audio Format	MP3, WMA, WAV
Image Format	JPEG
Bit Rate	MP3: 32kbps – 320kbps; WMA: 32kbps – 160kbps
Recording Quality	WAV: 8KHz, 32Kbps; MP3: 48KHz, 64Kbps
Language	German, English
Recharge Time	3.5 hours
Recording Time	Varies depending on the storage capacity
Battery Type	Rechargeable Lithium-ion battery (3.7V, 850mAh)
Battery Life	3 hours
Signal Noise Ratio	> 80dB
Frequency Response	20Hz – 20KHz
Operating Current	<380mA
Storage Temperature	-20°C ~ +55°C
Ambient Temperature	0°C ~ +55°C
Relative Humidity for Operation	20% ~ 93% (40°C)
Relative Humidity for Storage	20% ~ 93% (40°C)
Dimensions	L x W x H: 103mm x 64mm x 20mm
Weight	81.3g

### 3.3 Important Notice

When you download files, you must copy videos/images to DCIM/100MEDIA, and copy audio files to MP3. Otherwise, these files cannot be played or viewed. If you delete the “DCIM” or “MP3” folder accidentally, please recreate it or restart the device.

For WMA track, ID3 information such as artist and album is not displayed. For MP3 tracks, the ID3 information should be no longer than 15 characters.

For WMA tracks, please ensure that the bit rate is between 32kbps and 160kbps.

When the battery level is low, please ensure that you charge it promptly.

Make sure that videos or images are of a supported file type (ASF/JPEG). The Huffvuv codec is not supported. If the files are not supported you will need to convert them using the Transcoding Tool included on the CineWalker file conversion software CD.

To ensure that your Line-in recordings are of high quality, keep audio sources from audio players at a moderate volume.

The system clock will be reset after the battery is reinserted, so will need to be reset manually.

Ensure that the battery is sufficiently charged before formatting.