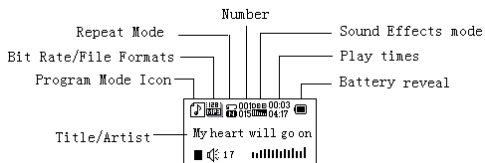


Dimension	50 x 32 x 11	
Weight	20 gr	
Screen	Matrix (128*64) Liquid Crystal	
Connect to PC	High Speed USB1.1 (Read 1000K Byte, Write800K Byte)	
Memory	1,2,4 GB Flash	
Power Supply	Max 5 hours play mode	
Voice Recorder	Sample rate	8KHz
	Format	WAV (32K bps), ACT (8K bps)
	Time	35hours (ACT, 128M Flash)
MP3	Max. Output	(L) 10mW + (R)10mW (32Ohm)
WMA	MP3 Bit rate	8K bps – 320K bps
WMV	Bit rate	5K bps – 384K bps
ASF	Freq. Response	20Hz to 20KHz
	SNR	85dB
Supported Music Formats	MP3, WMA, WMV, ASF, WAV	
Operating Temperature	-5 to 40 degree	
8 Languages Display	English, German, French, Italian, Spanish, Croation, Russian, Dutch	
Supported Systems	Windows ME/2K/XP, Mac OS 10, Linux 2.4.2	

takeMS[®]
desco

DISPLAY



Battery Level

The player shows capacity on 9 levels

Battery is full on 1.5V.

As time goes on, capacity indication will vanish.

Indicator shows blank when battery almost ran out.

Now you should charge your battery. Please switch on the player before charging. This player cannot be charged when power is switched off

Please switch off power when you do not use it.

BASIC FUNCTIONS

» Access to Menus

Press Menu to access menus.

» Scrolling

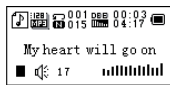
Scroll music, menus, Fast Forward / Reverse

» List of Menus

To access different menu functions from main menu.



Main menu



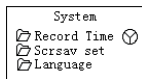
Music Mode



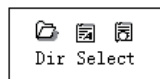
Recorder Mode



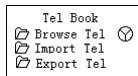
Play Mode



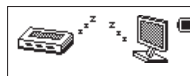
Settings



E-Documents



Telephone book



USB Mode

Volume Adjust

Push **VOL** to access volume adjust, press Next/Last to increase or decrease volume.

Switch on/off

(Power switch (right side) must be in “On” Position)

Press and hold **play** to switch on when the player is off.

Press and hold play to switch off when the player is on.

Play & Pause; exit from submenu

On music mode, press **Play** to play music.

When playing music, press **Play** to pause; press and hold to “pause” playing.

Start / Stop recording

On recording mode, press Play to stop.

KEYS PROCESSING

Keys Functions Definition

1. **Play**: Power On/Off, Play, Pause, Stop
2. **MENU**: Entry main menu or exit from current menu.
3. **VOL**: Volume Adjust
4. **REC**: Entry recording mode.

5. **Next**: Next, FF, Volume increase

6. **Last**: Previous, Rev, Volume decrease

7. **USB**: USB outlet

8. **ON/OFF**: Power switch

9. **Earphone**: Standard earphone outlet

Key Processing Definition

Keys processing includes 4 actions: Press, Press and Hold, Push, Hold. **If not mentioned otherwise, all actions are Press.**

Press: Press a key and validate immediately;

Press and Hold: Press a key and hold it at least 1,2s this action valid only once.

Push: Push a key, it is validated when released.

Hold: events occur in the same frequency as you hold the key such as Fast Forward and Reverse.

PLAY MUSIC

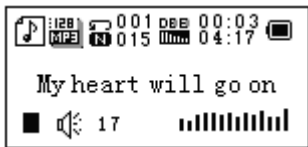
Simple actions

1. Put earphone plug into earphone outlet;
2. Press and hold **Play** to switch the player on, then enter Music Mode and press Play to play music.
3. Select a music: **Last**: Previous music;

Next: Next music. Volume adjustments: Press **VOL** to change volume, press **Next** to increase, **last** to decrease.

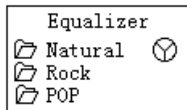
Equalizer Mode

1. When playing music



2. Press **Menu** to enter the submenu Play
3. Push **Next** to choose the Equalizer Mode
4. Press **Menu** to enter the 'Equalizer Mode' submenu

Select an equalizer:



5. Details of each equalizer (EQ):
Natural, Rock, Pop, Classical, Soft, Jazz, DBB
6. Push **Next** to select an EQ and press **Menu** to confirm.

Synchronous Lyric Display

The player supports lyric files with *.LRC suffix, and displays them synchronously.

How to use lyric files?

Please make sure the lyric has the same name as the music For example:

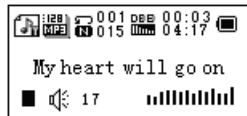
Music file: My heart will go on.mp3

Lyric file: My heart will go on.lrc

How to know if lyric available?

If lyric is matching, the icon  will be replaced into 

1. When a matching lyric is available:



2. Press and hold **Menu** to enter the lyric interface;
3. Lyric is displayed
4. Press **Menu** return to the music mode.

VOICE RECORDING

Please make sure that the battery has enough capacity before you start recording. Each folder can save up to 99 voice recording files.

Record using the “Record mode”

1. .Enter the main menu:



2. Push **Next** scroll to the Record mode
3. Push **Menu** to select the Record mod, the screen will display as follows:



4. Press **Play** to start recording.

① Voice will be recorded in current folder which is set by pressing 'Record stop / Main folder'

① If “Memory full” is displayed, it means that no more space is available to save new record files, please delete other files in order to release some memory space.

① If “Folder full” is shown, it means that there are 99 record files in this folder. Please choose another folder.

① The player only responds to Play and A-B during the recording process.

Select Record Type

1. When the interface 'Record stop' is selected
2. Press **Menu** to enter the submenu Record
3. Push next to scroll to the submenu 'Record type' then press **Menu** to select it.

Fine record	Wav file, fine quality
Long-time record	act file, normal quality
Fine voice control	wav file
Long-time voice control	act file

4. Press **Next** to choose the appropriate type and press **Menu** to select it
5. Press **Play** to start recording.

PLAY RECORDED FILES

1. Enter main menu
2. Push **Next** to choose the 'Play mode'
3. Push **Menu** to enter the playing interface
4. Press again **Play** to play the file.
5. Choose voice record files.

Last: Select previous file;

Next: Select next file;

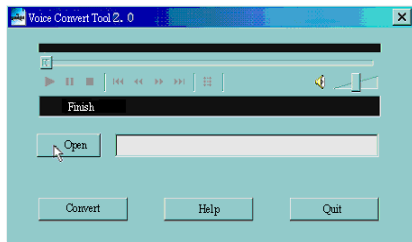
6. Volume control

Push **VOL** to access volume adjustment, press **Next/Last** to increase or decrease the volume.

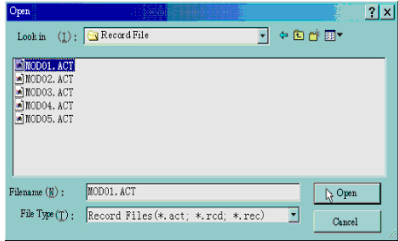
CONVERT ACT FILES INTO WAV FORMAT

The ACT file which produced by this player can be converted into WAV format by using the provided software.

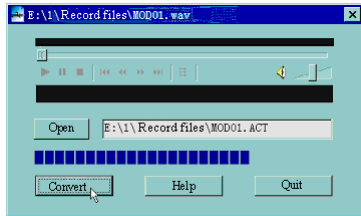
1. Insert the "Sound Converter" program.
Click on the "OPEN" button



2. Select the ACT files which you would like to convert.



3. Click on the 'CONVERT' button, the program will start converting the files.



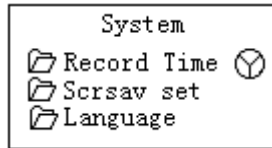
PS: This tool can also play WAV and MP3 files.

SETTINGS












Entering Settings

Using this option, you can set system performances, the options may vary for the different firmware version.

1. Enter the main menu
2. Push Next in order to scrolling to "Settings"
3. Press Menu to enter the settings.



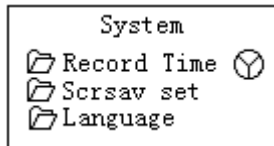
Options introduction:

- | | |
|---|---|
|  (Recording Time) | Setting date / time when saving recorded file |
|  (Screensaver) | Screensaver setting |
|  (Language) | Choosing languages |
|  (Timing shut off) | Setting a countdown time in minutes, the player will shut off when time is out. |
|  (Repeat Setting) | Setting repeat status |
|  (Contrast Setting) | Setting display contrast |
|  (PC Mode) | Options for 'Secret Space' |
|  (Memory Status) | Check memory space and usage status |
|  (Firmware Ver.) | Version of player's firmware |
|  (Upgrade Firm.) | Use for upgrade firmware |
|  (Exit) | Exit from Setting interface |

List of menus:

'Recording time' setting

1. System setting interface



2. Press **Menu** to enter the 'Recording time' interface

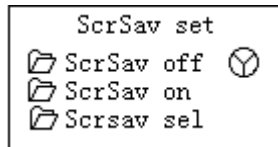
Recording time:



3. Push **VOL** to set the year. While setting, year is flashing.
4. Push **Next** the value will increase (**Last** for the opposite function)
5. After setting, press **Menu** to exit.

“Screensaver” Setting

1. Press Menu to enter the screensaver setting;



2. Push **Next** to select the setting (**Last** for the previous setting)
3. After setting, press **Menu** to exit.

“Language” Setting

Please consult the paragraph ‘Sound Setting’

Turning off Setting

Please note: You can set time in seconds on ‘Battery saving’ mode, the player will shut down automatically when the player stops or has been idle for the period you have set. This function is void if the time is set to 0.

You can set time in minutes on ‘Sleep mode’, the player

will shut down automatically when the player becomes idle (regardless of its current status) for the period you have set. This is designed for listening music before sleeping. Please note: The sleep mode can only be activated once after setting, you have to set again if you want to use it next time.

‘Repeat Settings’

Please consult the paragraph ‘Sound Setting’

Note: in the “Manual Mode” you should set repeat points manually. In “Automatic Mode” the player can identify a sentence automatically when on A-B repeat.

‘Contrast Adjust’

Please consult the paragraph ‘Backlight time setting’

‘PC connection’ setting

Please consult the paragraph ‘Sound Setting’

Some operating systems (Windows 2K SP4 or prior) may not recognize a USB stick with two symbols. Therefore, you have to choose an active stick when using the ‘Secret Space’ function the PC will only find the active stick.

'Memory status'

You can check the total memory space and the percentage which is being used.

'Firmware version'

You can find the player's firmware's version.

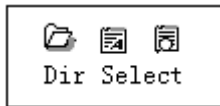
'Firmware upgrade'

Use to upgrade player's firmware.

① Tips: When pressing Play you can quickly exit the current menu. This function is working on all menus.

READING DOCUMENTS

In the main menu, press Next/Last to choose e-Document, press Menu to enter the corresponding submenu:



Select Folder: Select the root directory of flash drive.

Press **Menu** to enter the 'Select Folder' interface, press **Menu** to select a file.

Note: You do not need to select a folder if the file which you want to read is stored in root directory.

To select a file, please consult the 'Select folder' instructions.

Push **Next** to choose 'Read document', then press Menu to confirm. While reading, press **Next** or **Pre** to scroll.

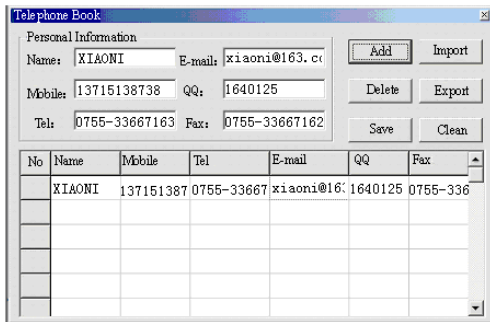
USING TELEPHONE BOOK

How to find telephone information?

While on main menu, push NEXT to choose the Telephone Book, press Menu to open it. Please find following details of the submenu lists:

1. Browse TEL
2. Import Tel File
3. Export Tel File
4. Exit

2. Input information into the dialog box, then click 'ADD', a new contact will be created.



The screenshot shows the 'Telephone Book' dialog box with the 'Personal Information' section. The 'Name' field contains 'XIAONI', 'E-mail' contains 'xiaoni@163.c', 'Mobile' contains '13715138738', 'QQ' contains '1640125', 'Tel' contains '0755-33667163', and 'Fax' contains '0755-33667162'. The 'Add' button is highlighted with a dashed border. Below the form is a table with columns: No, Name, Mobile, Tel, E-mail, QQ, Fax. The first row contains: XIAONI, 137151387, 0755-33667, xiaoni@16, 1640125, 0755-336.

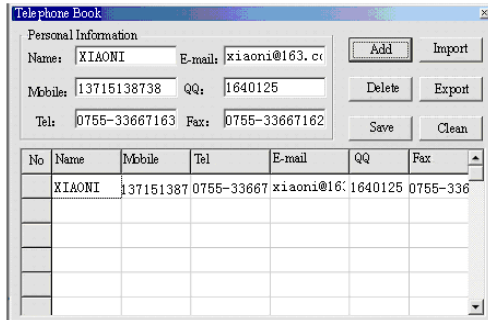
No	Name	Mobile	Tel	E-mail	QQ	Fax
	XIAONI	137151387	0755-33667	xiaoni@16	1640125	0755-336

3. Click on 'SAVE', a file named 'TELBOOK' will be created on the player. The Telephone Book file will be created.

Editing the Telephone Book file

If you need to change contact details, you can do it as follows:

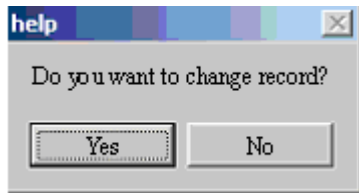
1. Click on the column where the contact is stored which you need to change, then you will see the details of the corresponding contact:



The screenshot shows the 'Telephone Book' dialog box with the 'Personal Information' section. The 'Name' field contains 'XIAONI', 'E-mail' contains 'xiaoni@163.c', 'Mobile' contains '13715138738', 'QQ' contains '1640125', 'Tel' contains '0755-33667163', and 'Fax' contains '0755-33667162'. The 'Delete' button is highlighted with a dashed border. Below the form is a table with columns: No, Name, Mobile, Tel, E-mail, QQ, Fax. The first row contains: XIAONI, 137151387, 0755-33667, xiaoni@16, 1640125, 0755-336.

No	Name	Mobile	Tel	E-mail	QQ	Fax
	XIAONI	137151387	0755-33667	xiaoni@16	1640125	0755-336

2. After editing, click on 'increase', you will receive a reminder:



3. Click on confirm edit, you will find 2 records of the same person.

① If you change the name of the contact, a new recorder will be created.

Importing and exporting the Telephone Book:

Export Telephone Book:

This function allows you to import a telephone book on your MP3 player from PC:

- » Create Telbook.bin by using the provided Tel. book editor Telbook.exe
- » Connect the player with the USB cable, copy telbook.bin to the root directory of MP3 player.
- » Switch the player on and enter the 'Import Tel file'
- » Import telbook.bin to player

Export Telephone Book:

This function allows you to export Telephone Book file and then you can edit it on PC:

- » Switch the player on and enter the 'Export Tel file'
- » Confirm the files which want to export.
- » Connect USB cable. Search for the telesave.bin in the root. You can copy it and edit it on the PC

USING USB STICK

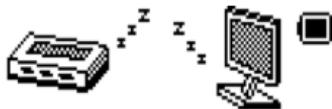
The player is also a standard USB stick. Supported Windows 2K or above (no need for drivers), Mac OS 10.3, Red hat Linux 8.0 or higher.

The player supports USB power supply, it can be used without battery when it is connected to the PC.

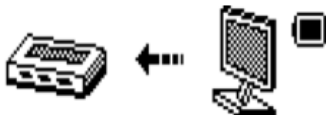
To enter, when on waiting mode' press Menu to return to main menu and choose the operation you need. This player supports the Suspend mode.

When connected to PC, the player works in the following three modes:

1. Waiting



2. Downloading



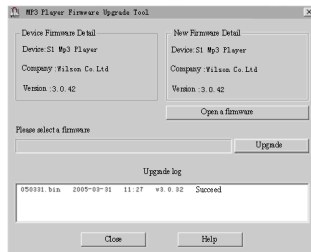
3. Uploading



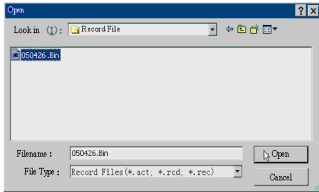
UPGRADING YOUR PLAYER

You can use the PC software to maintain or upgrade the player's firmware.

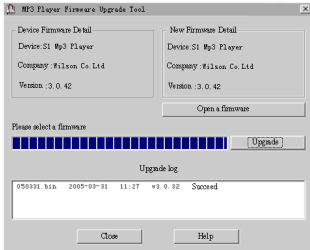
1. Enter the main menu
2. Push Next to scroll to the 'Settings'
3. Push Menu to enter the 'Settings' submenu.
4. Push next to scroll to the 'Firmware upgrade' and push Menu to enter
5. Connect player to PC
6. Run the upgrade tools MP3 Player Update, and then click on 'Choose new firmware'



7. Select a firmware file. (It is stored on the provided CDROM or can be downloaded from the Internet)



8. Click on 'Start Upgrade', the upgrade will be performed.



9. When the upgrade has been successful, you will see the following display on the player:



① Firmware upgrade is to improve performance of the player; you can still use it normally without performing an upgrade process

① The player will not work if you perform an incorrect process! Please read this manual carefully before performing the upgrade process.

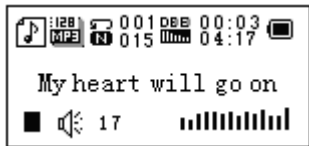
① The upgrade software does not work on other players and vice versa.

OTHER SETTINGS

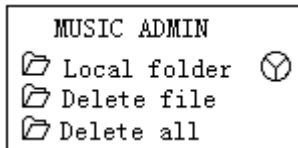
Choosing another folder (Stop submenu)

You can classify files into several different folders that simplifies to manage them (you should create the folders on the PC). The player can identify 9 folders in its root.

1. When stopped



2. Press **Menu** to enter the Stop submenu



3. Press **Menu** to enter the folder choosing interface



4. Press **Next** or **Last** to choose a folder



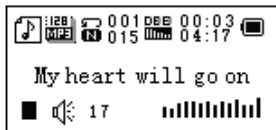
5. Press **Menu** to entry the selected folder

Please note: You can set folders independently in the Music / Recorder / Play mode

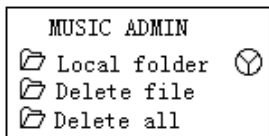
Deleting file (Stop submenu)

You delete the corresponding files/channels in each Music/Play modes.

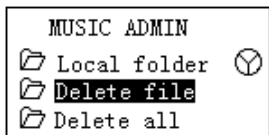
1. When stopped



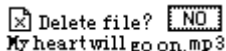
2. Press **Menu** to enter the Stop submenu



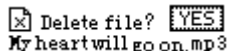
3. Press **Next** or **Last** to choose 'Delete file' or 'Delete all'



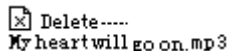
4. Press **Menu** to enter delete interface



5. Push **Next** to choose "YES"



6. Press **Menu** to confirm delete










'Delete all' will delete all files in current folder of current mode. I.e. Choose 'Delete all' in Music mode will delete all music files; recorder files will not be affected.

① Please safely remove the player and unplug the USB cable after deleting files on PC, otherwise it is possible that some files will not be removed.

Play mode (Play submenu)

You can choose different play mode (i.e. repeat, shuffle) when playing music or recording files. The first option on Play submenu is 'Play mode'

REPEAT

 Normal	Playing music files in sequence until the end of folder
 Repeat One	Repeat single music file
 Folder	Play all music files in folder
 Repeat Folder	Repeat all music files in folder
 Repeat All	Repeat all music files
 Random	Play music files in the folder randomly
 (Intro)	Play the 10s of each music files in sequence

Playing speed (Play submenu)

You can choose different playing speeds without affecting the sound. (Only valid for MP3 files)

1. While playing music
2. Push **Menu** to enter the submenu Play
3. Push **Next** to scroll to the 'Play speed' option
4. Push **Menu** to enter this option
5. Push **Next** for faster, **Last** for slower

Note: The Playing speed will be applied on all music files

Repeat mode (Play submenu)

Press **-B** to enter or Entering from Play submenu:

A-B Repeat


1. When playing music or recording
2. Push **Menu** to enter the submenu Play
3. Push **Next** to scroll to the 'Repeat Mode' option
4. Push **Menu** to enter this option

Repeat Mode: 'A' of icon  flashes, waiting for starter A

5. Push Next to select 'A'


'B' of icon  flashes, waiting ender B


6. Push Next to select B

Symbol  fixed and starting repeat between A-B, while playing, you can push **Last** to reset A point.

① In repeat mode, you can press **VOL+** or **VOL-** to adjust the playing speed.

Contrast Function **(No such Function in the playing mode)**

1. While entering the contrast function, the repeat icon will be displayed as , the original sound will be played.

2. While finishing the original, repeat icon will be replaced by , player will play the recorded voice.

① Push **Last** to return to the 'Karaoke mode'

① Press **Menu** to exit the repeat mode using the above three modes.

Repeat times (Play submenu)

Please consult the paragraph 'Backlight time setting'

Repeat time determines the number of times A-B is being repeated until exit

Repeat interval (Play submenu)

Please consult the paragraph 'Backlight time setting'

Repeat interval determines the period of time between previous repetitions (in seconds).

TROUBLESHOOTING

No Power

- » Check if the battery had installed properly
- » Make sure you have switched the player on

No Sound

- » Make sure the volume is not on 0 position and that the earphones are properly connected
- » Please make sure that the earphones are clean
- » Damaged MP3 files may have noise and even cannot be played

Strange characters on the display

- » Make sure you have chosen correct language

Cannot Download Music

- » Check the USB cable, and make sure that the player is properly connected to the PC
- » Check if the driver has been well installed
- » Make sure there is still enough blank memory